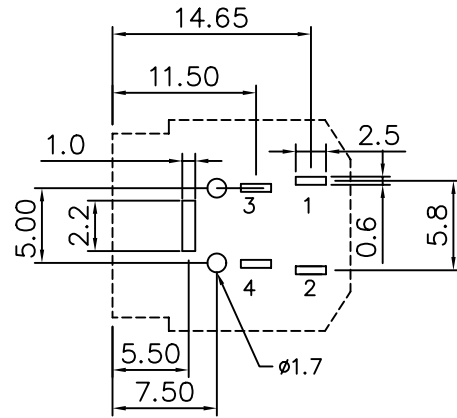
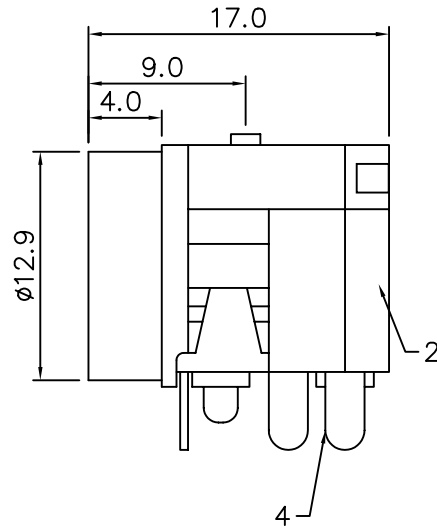
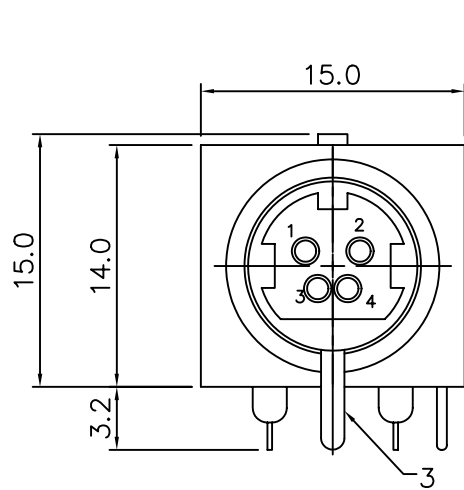


SPECIFICATIONS

Current Carrying Capacity:20V DC,7.5A Max.
 Dielectric Strength:A Potential Of 250V RMS,50/60HZ
 Shall Be Applied Between Any Open Contacts
 For 1 Minute,Without Breakdown
 Insulation Resistance:Before Any Environmental Test
 50Megohms Min.At 250V DC
 After Any Environmental Test:
 5 Megohms Min. At 250V DC
 Contact Resistance:Before Any Test
 30 Milliohms Max. At 20mA 1KHZ
 After Performance Life Test
 60 Milliohms Max. At 20mA 1KHZ
 Insertion Force: 6.0kg Max.
 Withdrawal Force:0.5-6.0KG.
 Performance Test(No.Load Condition):
 Sockets Shall Be Subject To 1000 Cycles
 At The Rate Of 10 To 20 Cycles PER Minute



Recommended PCB Layout
 <Bottom View>



P/N	Name	Material	Finish
1	Body	PBT	UL 94V-0
2	Cover	PBT	UL 94V-0
3	Earth Terminal	BSR-H 0.4t	Pb 10%,Sn 90%
4	Contact Terminal	BSR-H 0.3t	Pb 10%,Sn 90%