

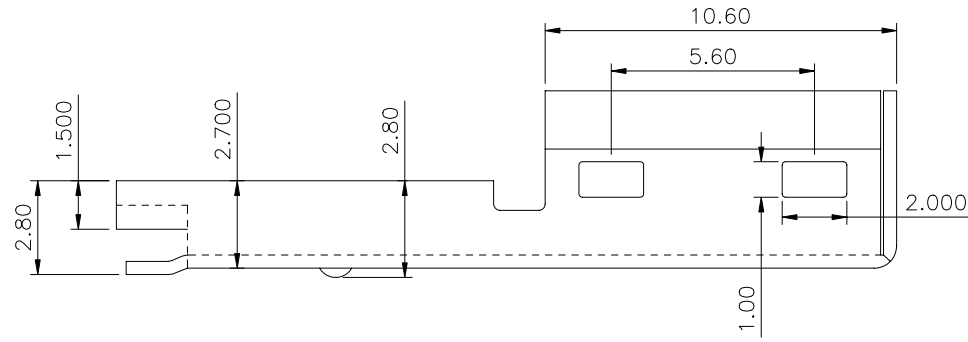
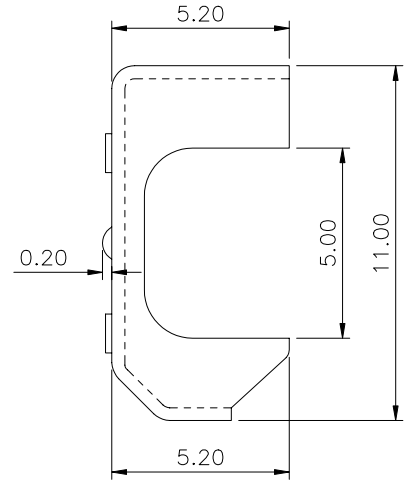
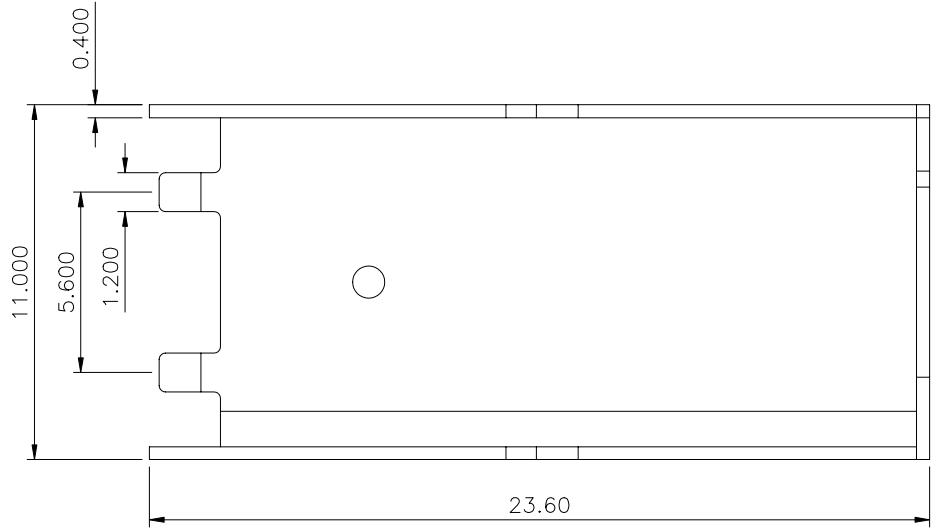
SPECIFICATION

Withstanding Voltage:500V AC/0.5mA/60S
 Contact Resistance:30 Milliohms Max.
 Insulation Resistance:500V DC/1000 Megaohms Min.
 Temperature Range:-40°C~+85°C
 Insulator:PBT UL94V-0,Black
 Contact:Copper,Gold Plated On Contact Area
 Tin Plated On Solder Tail Area
 RoHS Compliant



| | | | | | | | | |
|---------------------------|--|-------------------|--|---|--|-------------|--|--|
| CATEGORY | | APPROVED BY | | UNLESS OTHERWISE SPECIFIED TOLERANCES ARE .X ±0.30 .X* ±3.0* .XX ±0.20 .XX* ±2.0* .XXX ±0.10 .XXX* ±1.0* | | | | |
| PART No. FW2X03PS-H | | MEI | | | | | | |
| DRAWING No. FW2X03PS-H | | CHECKED BY HZF | | | | | | |
| SCALE | | REV. | | DRAWING BY XYH | | UNIT mm | | |
| NONE | | A0 | | A0 | | NEW RELEASE | | |
| | | | | NO.REV. | | REVISIONS | | |
| | | | | CHK | | DATE | | |
| | | | | HZF | | 11/15/2008 | | |

SPECIFICATION
 Material:SPCC,Nickel Plated Over Copper
 Salt Test Time:8 Hours Min.
 RoHS Compliant

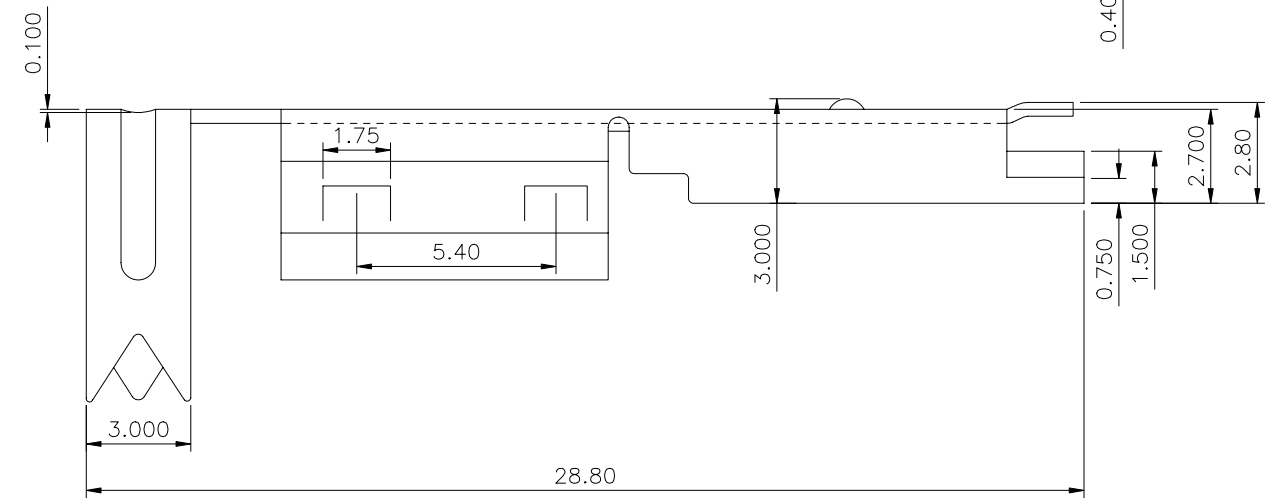
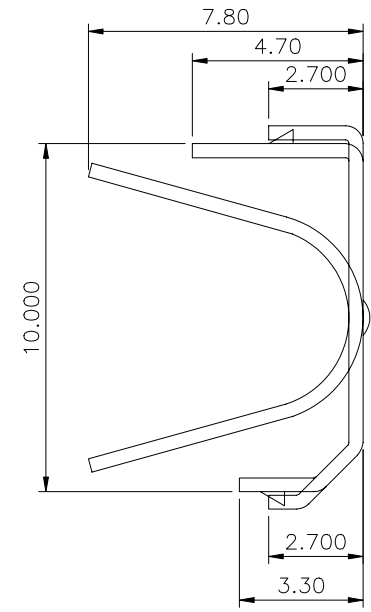
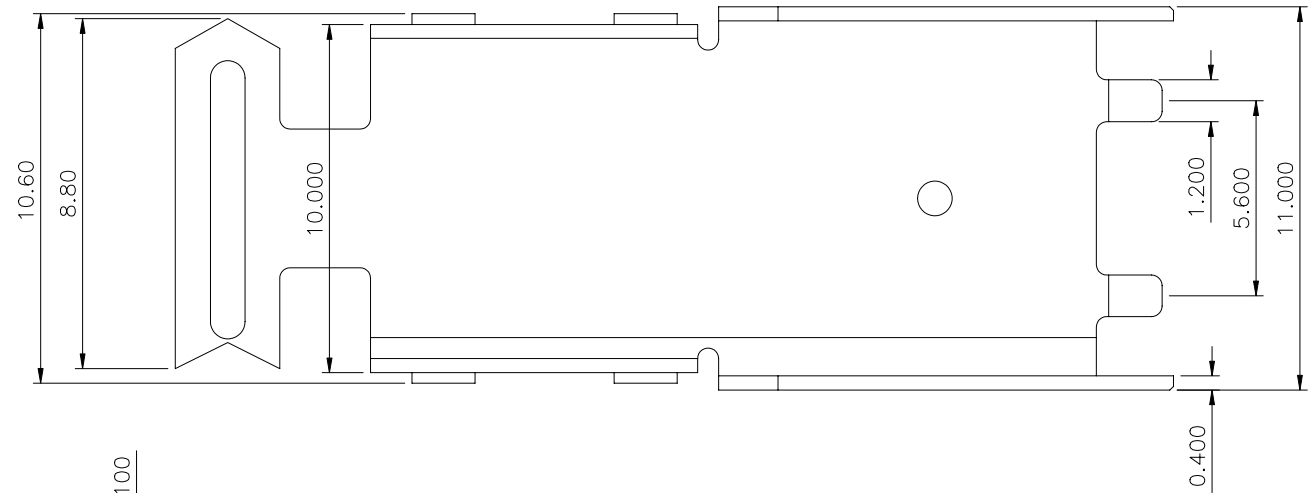


AUK A MEMBER OF AUK GROUP
太聯事業股份有限公司
AUK CONTRACTORS CO., LTD.

| | | | | |
|---------------------------|----|-------------------|--|---|
| CATEGORY | | APPROVED BY | | UNLESS OTHERWISE SPECIFIED TOLERANCES ARE .X ±0.30 .X* ±3.0° .XX ±0.20 .XX* ±2.0° .XXX ±0.10 .XXX* ±1.0° |
| PART No. FW2X03PS-H | | MEI | | |
| DRAWING No. FW2X03PS-H | | CHECKED BY HZF | | |
| SCALE NONE | | DRAWING BY XYH | | |
| REV. | A0 | UNIT mm | | |

| | | | | |
|------|------|-------------|-----|------------|
| NO. | REV. | REVISIONS | CHK | DATE |
| △ A0 | | NEW RELEASE | HZF | 11/15/2008 |

SPECIFICATION
 Material:SPCC,Nickel Plated Over Copper
 Salt Test Time:8 Hours Min.
 RoHS Compliant



AUK A MEMBER OF AUK GROUP
太聯事業股份有限公司
AUK CONTRACTORS CO., LTD.

| | | | | | | | | | |
|------------------------|----|-------------|----|---|----|-------------|-----|------------|--|
| CATEGORY | | APPROVED BY | | UNLESS OTHERWISE SPECIFIED TOLERANCES ARE | | | | | |
| PART No. FW2X03PS-H | | MEI | | .X ±0.30 .X* ±3.0* | | | | | |
| DRAWING No. FW2X03PS-H | | HZF | | .XX ±0.20 .XX* ±2.0* | | | | | |
| SCALE NONE | | XYH | | .XXX ±0.10 .XXX* ±1.0* | | | | | |
| REV. | A0 | UNIT | mm | NO. | A0 | NEW RELEASE | HZF | 11/15/2008 | |
| | | | | REVISIONS | | | CHK | DATE | |