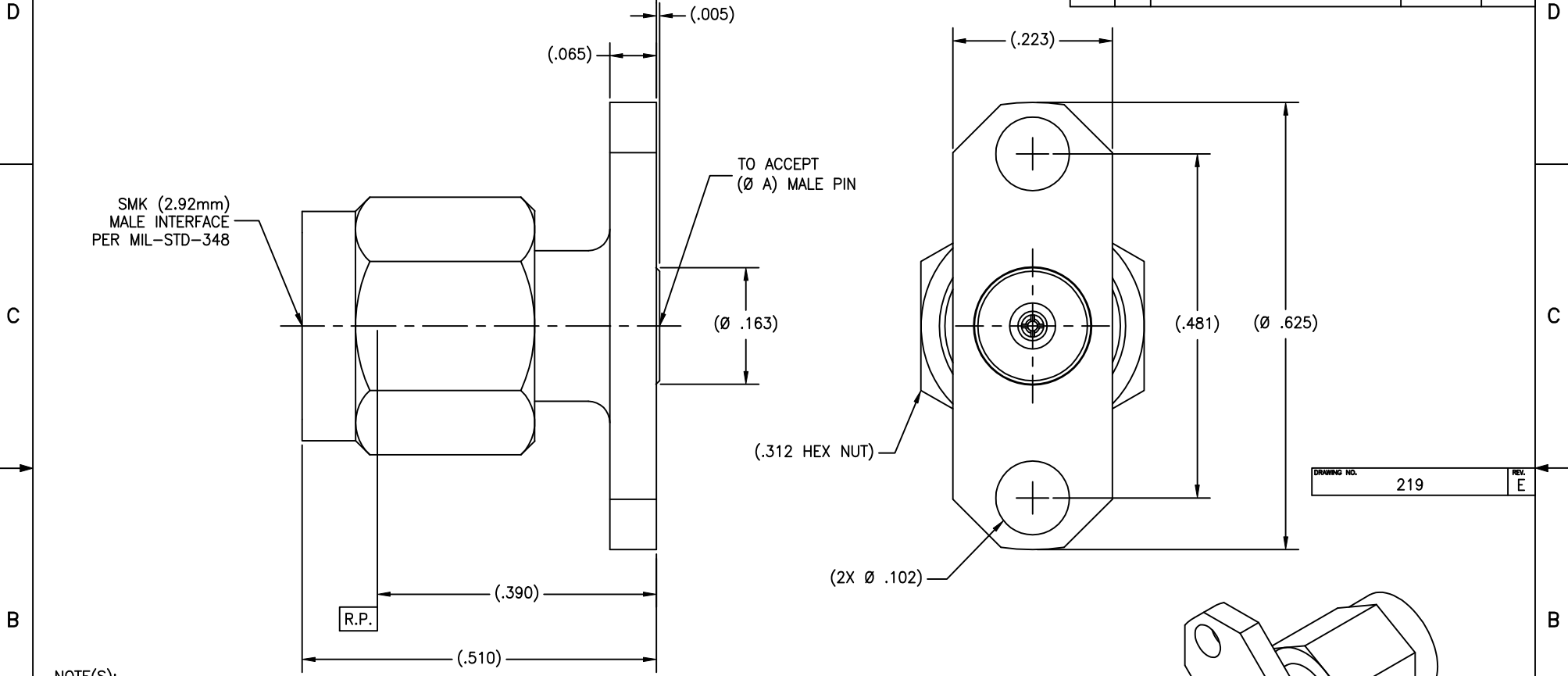


P/N	APPLICABLE NOTE(S)	(Ø A)
CC	1,2,3	.0120
CCSF	1,2,3	.0120

REVISIONS				
ZONE	REV	DESCRIPTION	DATE	BY
-	C	ECO 12440	10.27.00	IMG
-	D	ECO 14038	12.20.01	AGS
-	E	ECO 14702	07.17.02	ATV



NOTE(S):

1. MATERIAL(S):
 - 1.1 BODY, COUPLING NUT & INSERT: 303 SST PER ASTM A-582
 - 1.2 CONTACT & RETAINING RING: BeCu ALLOY PER ASTM B-196
 - 1.3 BEAD: (HIGH PERFORMANCE APPLICATION)
 - 1.4 GASKET: SILICONE RUBBER PER ZZ-R-756
2. FINISH(ES):
 - 2.1 COUPLING NUT: PASSIVATE PER ASTM A-967
 - 2.2 BODY: (FOR CCSF) PASSIVATE PER ASTM A-967
(FOR CC) GOLD PLATE PER ASTM B-488 OVER NICKEL PLATE PER AMS-QQ-N-290.
 - 2.3 CONTACT & INSERT: GOLD PLATE PER ASTM B-488 OVER NICKEL PLATE PER AMS-QQ-N-290.
 - 2.4 BEAD, GASKET & RETAINING RING: NONE
3. ELECTRICAL PERFORMANCE:
 - 3.1 FREQUENCY RANGE: DC-40 GHz
 - 3.2 R.F. INSERTION LOSS: 0.5 dB MAX TO 40 GHz
 - 3.3 VSWR: 1.10:1 DC TO 18 GHz
1.25:1 18-40 GHz

NOTICE
 THIS DRAWING EMBODIES A CONFIDENTIAL PROPRIETARY DESIGN ORIGINATED BY TENSOLITE COMPANY AND ALL DESIGN, MANUFACTURING, REPRODUCTION, USE AND SALE RIGHTS REGARDING THE SAME ARE EXPRESSLY RESERVED. IT IS SUBMITTED UNDER A CONFIDENTIAL RELATIONSHIP FOR A SPECIFIED PURPOSE AND THE RECIPIENT AGREES BY ACCEPTING THIS DRAWING NOT TO SUPPLY OR DISCLOSE ANY INFORMATION REGARDING IT TO ANY UNAUTHORIZED PERSON OR TO INCORPORATE IN OTHER PROJECTS ANY SPECIAL FEATURES PECULIAR TO THIS DESIGN. ALL PATENT RIGHTS HERETO ARE EXPRESSLY RESERVED BY TENSOLITE COMPANY, LONG BEACH, CALIFORNIA 90815.

TOLERANCES AND NOTES EXCEPT AS NOTED
 DIMENSIONS ARE IN INCHES.
 LINEAR .XX ±0.015 ANGULAR ± 1/2°
 FRACTION ± 1/32

1. MACHINE FINISH: 63/ RMS
2. BREAK ALL SHARP EDGES .003 MAX.
3. MACHINED FILETS: .005 MAX.
4. MACHINED SURFACES: SQUARE TO RESPECTIVE AXIS WITHIN .005 INCHES PER INCH.
5. MACHINED DIAMETERS CONCENTRIC WITHIN .002 I.L.R.
6. DIMENSIONS TO BE MET BEFORE PLATING.
7. CHAMFER ALL THREADS 45°.
8. THREADS PER H-28
9. REMOVE FRIVED EDGES ON TEFLON.
10. REMOVE ALL BURRS.

SEE NOTES	-	SEE NOTES	-
MATERIAL	SIZE	SPECIFICATION	PROCUREMENT
NEXT ASSY	Tensolite HIGH PERFORMANCE CABLES & INTERCONNECT SYSTEMS Long Beach, California 90815		
APPROVAL INITIALS	DATE	TITLE SMK (2.92mm) MALE 2 HOLE FLANGE (.223 X .625) MOUNT FIELD REPLACEABLE SUB-DIRECTORY FILE NAME	
DRAWN BY P.MAO	11.01.99	SCALE 10:1	OL
CHECKED		SIZE C 30990	DRAWING NO. 219
QUALITY		ENGINEERING ATV	07.17.02
SHEET 1 OF 1		REV. E	