

PIN WINDOW DETAIL
SCALE 10:1

SECTION "A-A"
SCALE 8:1

NOTES:

- SEE SHEET 2 FOR PART NO'S, CHARTED DIM'S AND P.C. BOARD LAYOUT.
- TAIL PATTERN FIXED AT LAST CIRCUIT POSITION FOR ALL CIRCUIT SIZES LISTED IN CHART (SEE SHEET 2).
- FOR ILLUSTRATION PURPOSES A 68 CIRCUIT ASSEMBLY IS SHOWN.

	B	ADDED PART NO. 71163-2102 PER EC #UDT1999-0247 J. LONG 98/11/06
	A1	REVISED TYP ON PIN WINDOW DETAIL PER EC # U80357 J. LONG 97/08/01
C	A	RELEASED PER ECR # U50953 95/03/24 J. LONG
LTR.	REVISIONS	LTR.

DIMENSIONS SHOWN (METRIC) INCH	
UNLESS OTHERWISE SPECIFIED TOLERANCES: ANGULAR 1/2°	
3 PLACE	± .005
2 PLACE	± .010 ± 0.13
1 PLACE	± 0.25
DRAFT WHERE APPLICABLE MUST REMAIN WITHIN DIMENSIONS	
DRWG. BY	J. Long
CHK'D. BY	J. Long
APP'D. BY	DJB
SCALE	4:1

REVISE ONLY ON CAD SYSTEM	
TITLE	SALES - SCSI ALL-PLASTIC VERTICAL RECEPTACLE ASS'Y WITH REVERSED TAILS
MOLEX INCORPORATED	SHEET NO. 1 of 2
DATE	95/07/27
PART NO.	SDA-71163-2***
DRWG. NO.	SDA-71163-2***
FILE NAME	ST116321.DGN
THIS DRAWING CONTAINS INFORMATION THAT IS PROPRIETARY TO MOLEX INC. AND SHOULD NOT BE USED WITHOUT WRITTEN PERMISSION.	
DIV.	DC
SIZE	C

2	C
1	C
MFG. SH. REV.	

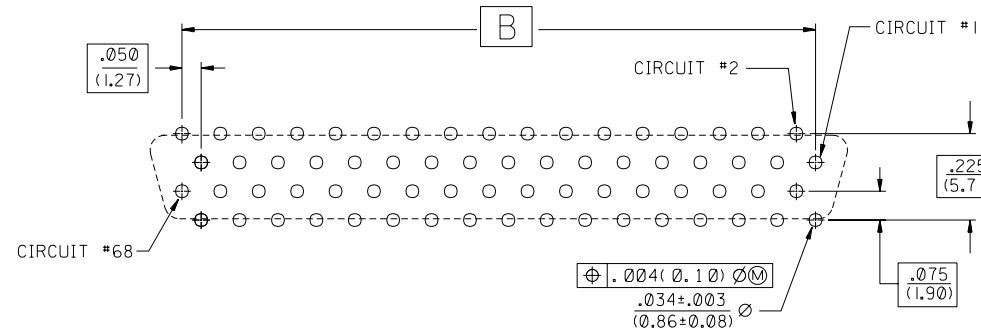
ITEM NO.	CKT. SIZE	PLATING	DIM. A		DIM. B		DIM. C		DIM. P TAIL LENGTH	RECOMMENDED PCB	
			INCH	MM	INCH	MM	INCH	MM		INCH	MM
71163-2001	68	GOLD 30	2.095	53.21	1.650	41.91	1.816	46.13	.080	.062	1.57
X 71163-2002											
X 71163-2003											
71163-2101	68	GOLD 30	2.095	53.21	1.650	41.91	1.816	46.13	.125	.062 OR .093	1.57 OR 2.36
71163-2102	68	GOLD 15	2.095	53.21	1.650	41.91	1.816	46.13	.125	.062 OR .093	1.57 OR 2.36
X 71163-2103											
71163-2201	68	GOLD 30	2.095	53.21	1.650	41.91	1.816	46.13	.165	.125	3.18
X 71163-2202											
X 71163-2203											

ASSEMBLY NO. LEGEND:

A-71163-2 * * *

- * * * — CIRCUIT SIZE AND PLATING
- * — TAIL LENGTH
- — NO PEG / REVERSE TAIL OPTION

X = INDICATES "NOT TOOLED"



RECOMMENDED 68 CKT. P.C. BOARD LAYOUT
CONNECTOR SIDE

NOTES:

- REFER TO PS-79058 PRODUCT SPEC. FOR ELECTRICAL, MECHANICAL AND ENVIROMENTAL SPECIFICATIONS.
- MATERIAL:
RECEPTACLE HOUSING: GLASS FILLED LIQUID CRYSTAL POLYMER (LCP);
COLOR: BLACK; UL 94V-0
CONTACTS: PHOSPHOR BRONZE
- PACKAGING:
PARTS PACKAGED IN TUBES PER PK-70873-0427.
- FINISHES: TERMINALS:
(GOLD 15)
SELECTIVE GOLD: THICKNESS= 15 MICROINCHES/(0.38 MICROMETERS) MINIMUM.
SELECTIVE TIN: THICKNESS= 75 MICROINCHES/(1.90 MICROMETERS) MINIMUM.
NICKEL UNDERPLATE OVERALL.
(GOLD 30)
SELECTIVE GOLD: THICKNESS= 30 MICROINCHES/(0.76 MICROMETERS) MINIMUM.
SELECTIVE TIN: THICKNESS= 75 MICROINCHES/(1.90 MICROMETERS) MINIMUM.
NICKEL UNDERPLATE OVERALL.

NOTE FOR LEAD FREE CONVERSION:
THE PRIMARY SHIPPING CARTON WILL BE LABELED "COMPLIANT TO RoHS DIRECTIVE 2002/95/EC AND ELV ANNEX II OF DIRECTIVE 2000/53/EC". CARTONS WITHOUT THIS LABEL MAY CONTAIN PRODUCT WITH LEAD.

LTR.		REVISIONS		LTR.		REVISIONS	
		C	SEE SHEET 1				
		B	SEE SHEET 1				
		A	SEE SHEET 1				

DIMENSIONS SHOWN (METRIC) INCH		UNLESS OTHERWISE SPECIFIED TOLERANCES: ANGULAR ± 1/2°	
5 PLACE ± .010	INCH	---	METRIC
2 PLACE ± ---	---	± 0.25	---
1 PLACE ---	---	± ---	---
DRAFT WHERE APPLICABLE MUST REMAIN WITHIN DIMENSIONS			
DRWG. BY: J. Long	CHK'D. BY: J. Long	APP'D. BY: DJB	SCALE: :

MFG. SH. REV.		REVISE ONLY ON CAD SYSTEM	
TITLE: SALES - SCSI ALL-PLASTIC VERTICAL RECEPTACLE ASS'Y WITH REVERSED TAILS			
MOLEX INCORPORATED		SHEET NO. 2	DATE 95/07/27
PART NO. SDA-71163-2***		DRWG. NO. SDA-71163-2***	
SEE CHART		DIV. DC	
THIS DRAWING CONTAINS INFORMATION THAT IS PROPRIETARY TO MOLEX INC. AND SHOULD NOT BE USED WITHOUT WRITTEN PERMISSION.			

71163