

## 4-WAY TOGGLE SWITCHES, WITH OR WITHOUT CENTER PUSHBUTTON

T4 and T5 series Large Trim Switches provide 4-way momentary toggle action with operating positions every 90 degrees, with a center pushbutton added to the T5 series. Switches are provided standard with a dusttight and moistureproof seal, but can be sealed fully watertight per IP68. T5 switches offer a toggle lockout when the pushbutton mode is actuated, and a pushbutton lockout when actuated in one of the four toggle positions.

<b>T4 Characteristics/Ratings:</b>	
<b>Circuits Available:</b>	DPDT, Single Break, all 4 toggle positions
<b>Electrical Rating:</b>	5 amp resistive, 3 amp inductive
<b>Electrical Life:</b>	100,000 cycles at full rated load
<b>Button:</b>	Thermoplastic
<b>Case:</b>	Anodized aluminum
<b>T5 Characteristics/Ratings:</b>	
<b>Circuits Available:</b>	SPDT, Double Break, all 4 toggle positions or DPDT, Single Break, all 4 toggle positions SPDT, Double Break, center pushbutton
<b>Electrical Rating:</b>	2 amp resistive and inductive, toggle and pushbutton
<b>Electrical Life:</b>	50,000 cycles at full rated load
<b>Button:</b>	Thermoplastic
<b>Case:</b>	Anodized aluminum

Please contact factory for additional configurations.



**T4-0010**



**T4-0065**



**T4-0082**



**T5-0004**



**T5-0015**



**T5-0018**



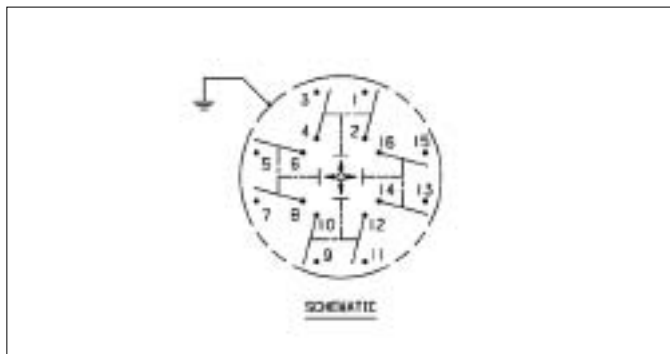
**T5-0028**



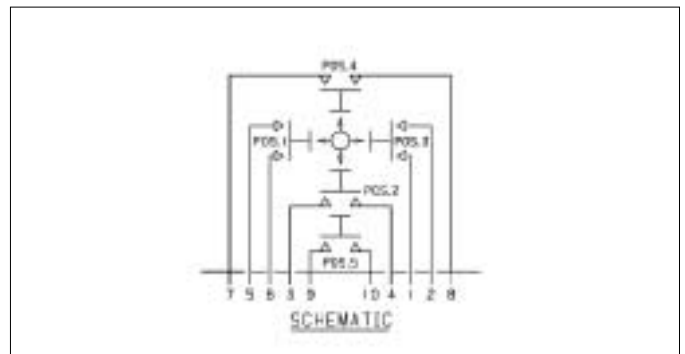
**T5-0029**



**T5-0035**



**T4**



**T5**