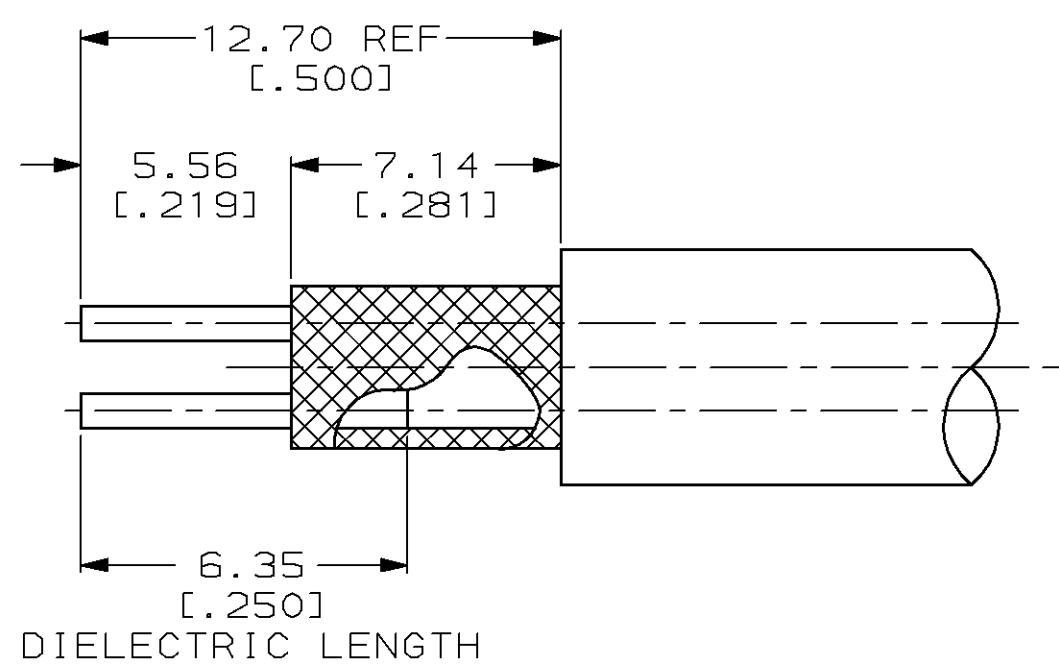
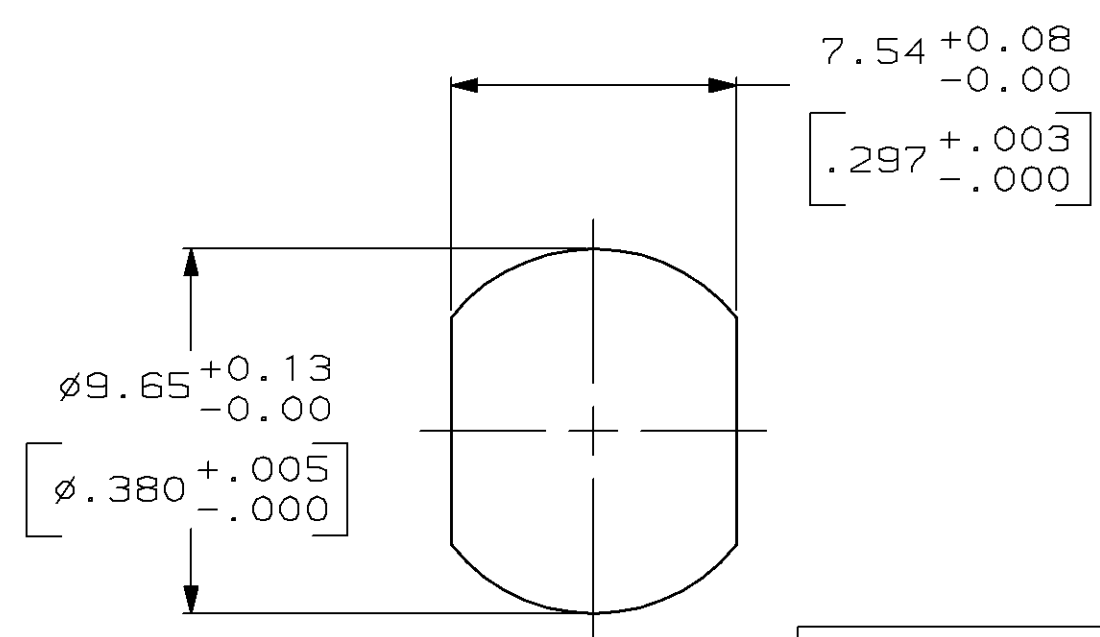


LOC	DIST	P	F	ZONE	LTR	DESCRIPTION	DATE	APPD
AJ	16				L	REDWN & SUPERSEDED -4 PER AJ-2432	06-26-91	BAS
					M	REVISED PER 0503-0512-97	10-29-97	JG

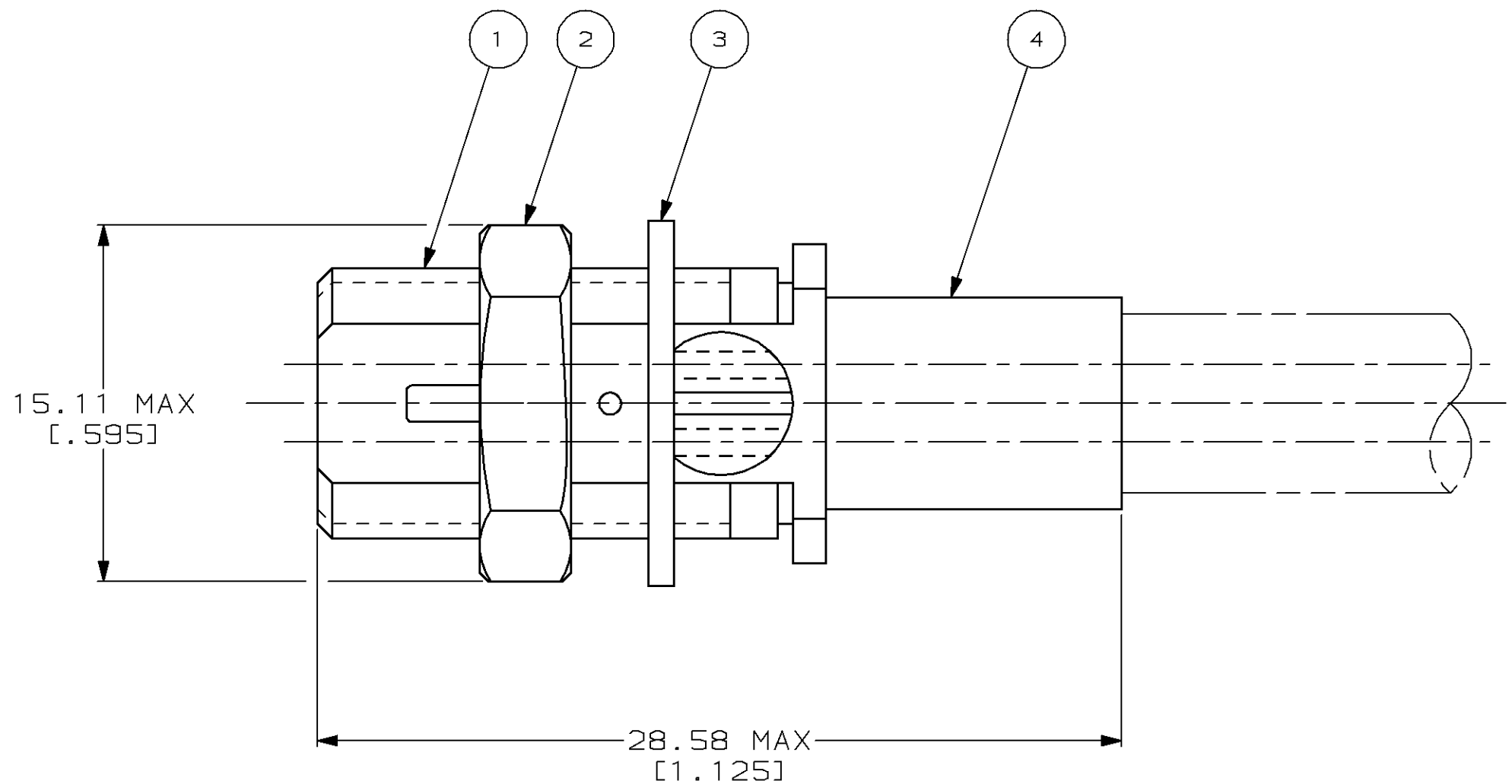
1. PARTS PACKAGED UNASSEMBLED
- △ 6.35 [.250] MAXIMUM PANEL THICKNESS
3. CRIMP TOOL: 69311-1
4. SEE I.S. 1833



RECOMMENDED STRIP LENGTH



△ RECOMMENDED PANEL CUTOUT



CABLE SIZE	4 FERRULE QTY=1	3 LOCKWASHER QTY=1	2 NUT QTY=1	1 RECEPTACLE ASSEMBLY QTY=1	PART NUMBER	
SUPERSEDED BY 2-329941-3	BELDEN 8451, 8641, 8737 & 8761	329056	329492	330249	2-330245-5	2-329941-4
	BELDEN 8451, 8641 AND 8761	329056	329492	330249	330245	2-329941-3
	BELDEN 8737	329960	329492	330249	330245	2-329941-1

DO NOT SCALE PRINT. UNLESS SPECIFIED DIMENSIONS IN mm [INCHES] TOLERANCES ON : 2 PLC DEC ± 0.41 [.016] 3 PLC DEC ± - ANGLES ± -		DR 06-26-91 B.SCOTT		PART NO	
MATERIAL -		CHK 02/05/93 G.MICHAEL		AMP AMP Incorporated Harrisburg, PA 17105-3608	
FINISH -		APPD 02/05/93 G.MICHAEL		NAME RECEPTACLE, THREADED, TWIN SERIES	
APPLICATION SPEC -		APPD 02/05/93 J.DAVIS		SIZE CAGE CODE DRAWING NO C 00779 329941	
WEIGHT -		PRODUCT SPEC -		SCALE 5:1 SHEET 1 OF 1	