


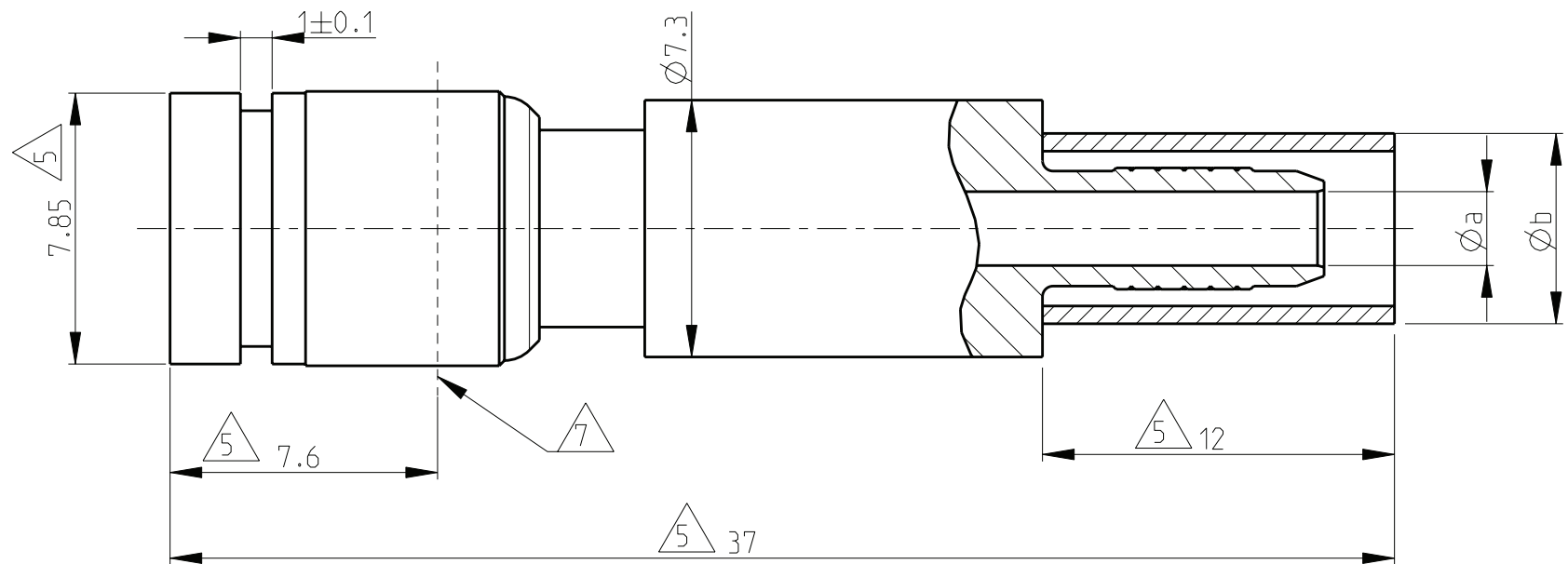


THIS DRAWING IS UNPUBLISHED. RELEASED FOR PUBLICATION
 © COPYRIGHT - BY TYCO ELECTRONICS CORPORATION. ALL RIGHTS RESERVED.

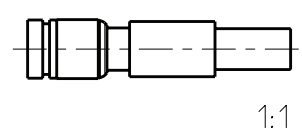
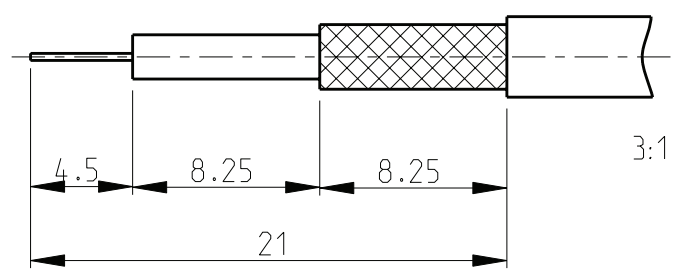
LOC	DIST	REVISIONS					
		P	LTR	DESCRIPTION	DATE	DWN	APVD
IS	-		0	-	16Feb2005	LDU	RL
			A	Released	14Jun2006	AN	DB

- Dimensions of mating face according to IEC 169-29 and CECC 22230.
- Contact part: Copper beryllium.
Contact surface: Gold
Insulation parts: PTFE
- Full Crimp version:
Center conductor: crimp tool Tyco PN 1331706-1; adaptor crimp tool PN 1402250-1.
Outer conductor: crimp tool Tyco PN 734537-1 (crimp dies see table).
- Packaging: multi packaging per 100 pieces.


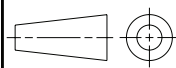
-  Max. dimensions.
-  DIN ISO 8015; DIN ISO 2768-m-R.
-  Mechanical reference plane.



STRIPPING DIMENSIONS



1460815-1	BT-3002	Ø2.1	Ø5.4	4.52 (PN 58425-2)
Tyco P/N	Cable type	Dim a	Dim b	Crimp hex

<small>THIS DRAWING IS A CONTROLLED DOCUMENT FOR TYCO ELECTRONICS CORPORATION. IT IS SUBJECT TO CHANGE AND THE CONTROLLING ENGINEERING ORGANIZATION SHOULD BE CONTACTED FOR THE LATEST REVISION.</small>		DWN L.Duville 16Feb2005 CHK F.Hellin 16Feb2005 APVD R.Leeman 16Feb2005	 Tyco Electronics CH - Switzerland - Lugano
DIMENSIONS: mm 	TOLERANCES UNLESS OTHERWISE SPECIFIED: 0 PLC ± 1 PLC ± 2 PLC ± 3 PLC ± 4 PLC ± ANGLES ± FINISH -	NAME Straight Cable Plug 1.0/2.3 Snap-lock 75 Ohm BT3002 Cable	SIZE A3 CAGE CODE 00779 DRAWING NO. 1460815 RESTRICTED TO -
MATERIAL -	FINISH -	WEIGHT -	CUSTOMER DRAWING SCALE 5:1 SHEET 1 OF 1 REV A