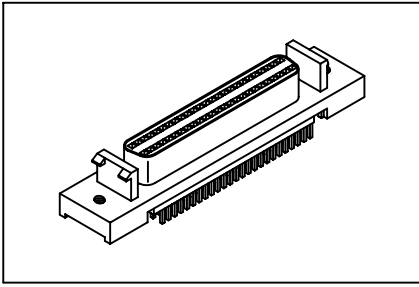


7225 Series

SCSI Straight Type



Material:

Housing: 30% Glass filled PBT UL94V-0.

Contacts: Phosphor Bronze.

Plating: Gold plated.

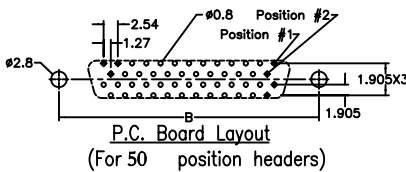
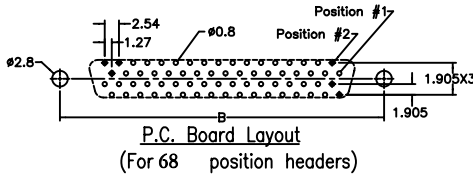
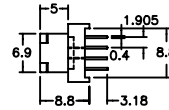
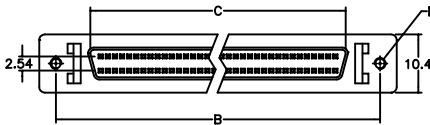
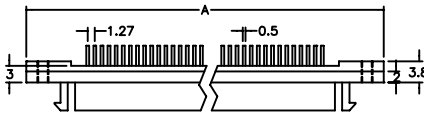
Electrical Characteristics:

Current Rating: 1 AMP.

Insulator Resistance: 1000MΩmin. at DC 500V.

Contact Resistance: 30mΩmax. at DC 100mA.

Operating Temperature: -55°C~+105°C.



Position	A	B	C	D
				Threaded Holes
50	52.45	46.48	34.98	2*56
				4*40
68	63.88	57.91	46.41	2*56
				4*40
LOCK LATCH	W/O RAIL WITH	RAIL LATCH	W/O RAIL W/O	RAIL LATCH
	D	E	H	J

Ordering information

7225- 50 F D C
 Series Position F: Female See: Lock Latch C: Selective Gold Plated