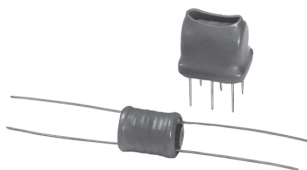


## Transformers Pulse, Trigger Type



### FEATURES

- Choice of printed circuit or bobbin-type configurations.
- Designed to transfer high amplitude or long duration pulses without saturation.
- Designed for low-cost trigger source isolation in half and full wave SCR power control circuits, including motor speed controls, heater controls and incandescent lighting controls.

### STANDARD ELECTRICAL SPECIFICATIONS

DASH NUMBER	TURNS RATIO	FIGURE	PRIMARY INDUCTANCE MINIMUM ( $\mu$ H)	LEAKAGE INDUCTANCE MAXIMUM ( $\mu$ H)	INTERWINDING CAPACITY MAXIMUM (pF)	DCR MAXIMUM (Ohms)	UNIPOLAR ET (V- $\mu$ SEC)
101*	1:1 $\pm$ 10%	1/3	200	3	800	1.5-1.5	570
102*	1:1 $\pm$ 10%	1/3	500	6	1500	4.5-4.5	912
103*	1:1 $\pm$ 10%	1/3	1000	12	2000	8-8	1283
104	1:1 $\pm$ 10%	1/3	2000	13	2800	12-12	1853
105	1:1 $\pm$ 10%	1/3	5000	15	3500	18-18	2850
106*	1:1:1 $\pm$ 10%	2/4	200	3	800	2-2-2	570
107	1:1:1 $\pm$ 10%	2/4	500	6	1500	6-6-6	912
108	1:1:1 $\pm$ 10%	2/4	1000	12	2000	10-10-10	1283
109	1:1:1 $\pm$ 10%	2/4	2000*	13	2800	15-15-15	1853
110	1:1:1 $\pm$ 10%	2/4	5000	15	3500	27-27-27	2850
111*	2:1 $\pm$ 10%	1/3	500	6	1000	4-2	912
112*	2:1 $\pm$ 10%	1/3	1000	10	1300	10-2	1288
113	2:1 $\pm$ 10%	1/3	2000	12	1800	10-5	1881
114	2:1 $\pm$ 10%	1/3	5000	15	2400	18-10	2850
115*	2:1:1 $\pm$ 10%	2/4	200	8	700	4-2-2	570
116*	2:1:1 $\pm$ 10%	2/4	500	11	1000	6-2-2	912
117*	2:1:1 $\pm$ 10%	2/4	1000	15	1300	5-2-2	1311
118	2:1:1 $\pm$ 10%	2/4	2000	60	2000	10-5-5	1881
119	2:1:1 $\pm$ 10%	2/4	5000	75	2100	20-10-10	2850
120*	5:1 $\pm$ 10%	1/3	5000	1500	400	19-3	2850
121	5:1:1 $\pm$ 10%	2/4	5000	1500	400	20-4-4	2850

\*Standard items in PT-10 Model. Other Dash Numbers available on request. All Dash Numbers standard in PT-20 Model.

### ELECTRICAL SPECIFICATIONS

**Primary Inductance Values:** From 200 $\mu$ H to 5000 $\mu$ H.

**Turns Ratio:** 1:1, 1:1:1, 2:1, 2:1:1 and 5:1.

**Temperature Range:** - 10°C to + 70°C.

**Dielectric Test @ 60 Hz:** 1600V RMS (Windings to case).

**AC Line Voltage @ 60 Hz:** 240V RMS maximum in test circuits shown.

### MATERIAL SPECIFICATIONS

**Bobbin:** Nylon.

**Leads:** Tinned, solderable.

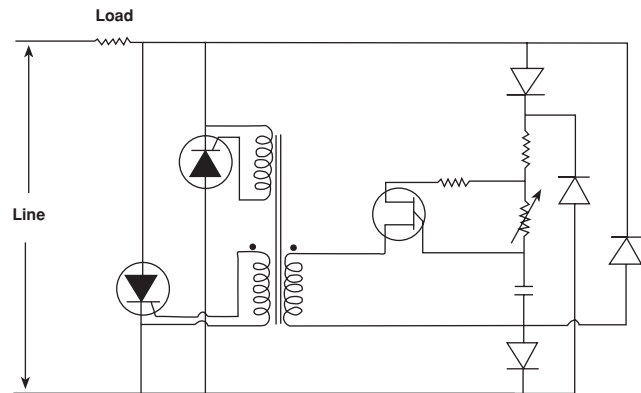
PT-10 = Polyurethane insulated magnet wire for clip or bracket mounting.

PT-20 = Tinned copper 0.025 [0.635]Sq. for printed circuit mounting.

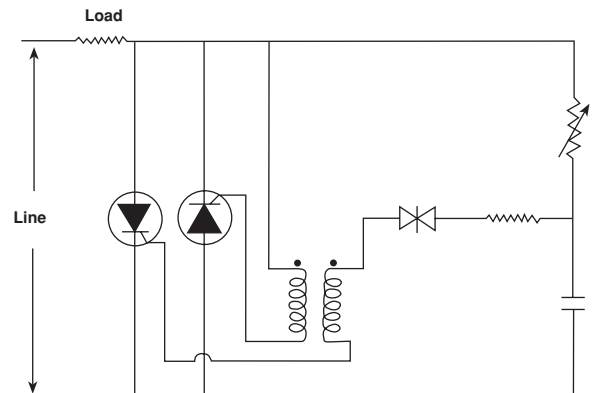
**Header:** Thermoset plastic.

**Covering:** Thermoplastic.

## CIRCUIT DIAGRAMS



Transformer Coupled Unijunction Transistor Triggering Circuit



Transformer Coupled Breakdown Diode Triggering Circuit

## DIMENSIONS in inches (millimeters)

### PT-10

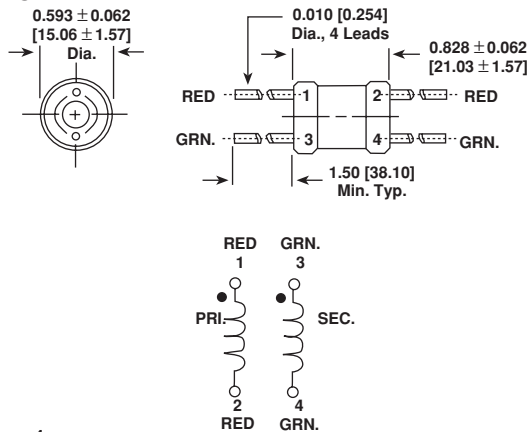


Figure 1

### PT-10

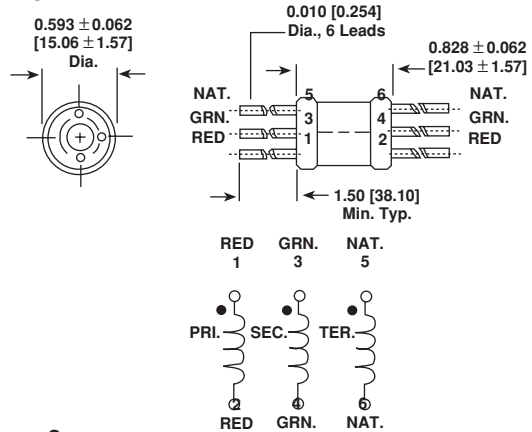


Figure 2

### PT-20

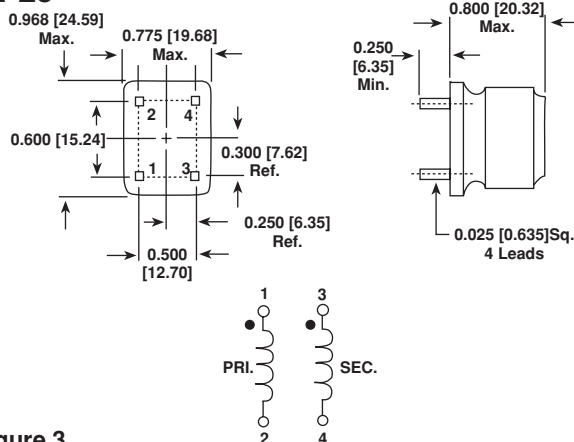


Figure 3

### PT-20

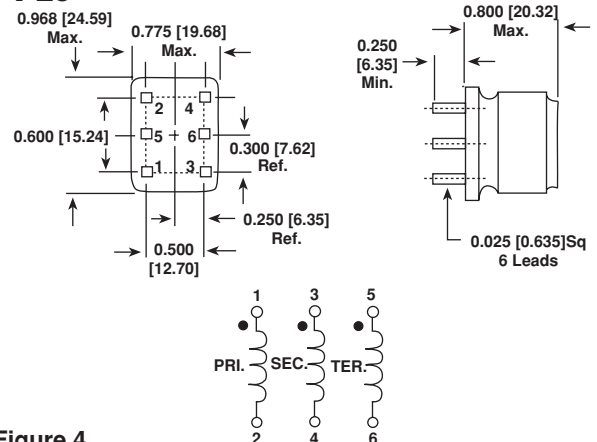


Figure 4

## PART MARKING

- Vishay Dale
- Model
- Style
- Dash number

## ORDERING INFORMATION

PT	10	101
MODEL	STYLE	DASH NUMBER

Contact factory for special designs not listed.



## Notice

Specifications of the products displayed herein are subject to change without notice. Vishay Intertechnology, Inc., or anyone on its behalf, assumes no responsibility or liability for any errors or inaccuracies.

Information contained herein is intended to provide a product description only. No license, express or implied, by estoppel or otherwise, to any intellectual property rights is granted by this document. Except as provided in Vishay's terms and conditions of sale for such products, Vishay assumes no liability whatsoever, and disclaims any express or implied warranty, relating to sale and/or use of Vishay products including liability or warranties relating to fitness for a particular purpose, merchantability, or infringement of any patent, copyright, or other intellectual property right.

The products shown herein are not designed for use in medical, life-saving, or life-sustaining applications. Customers using or selling these products for use in such applications do so at their own risk and agree to fully indemnify Vishay for any damages resulting from such improper use or sale.