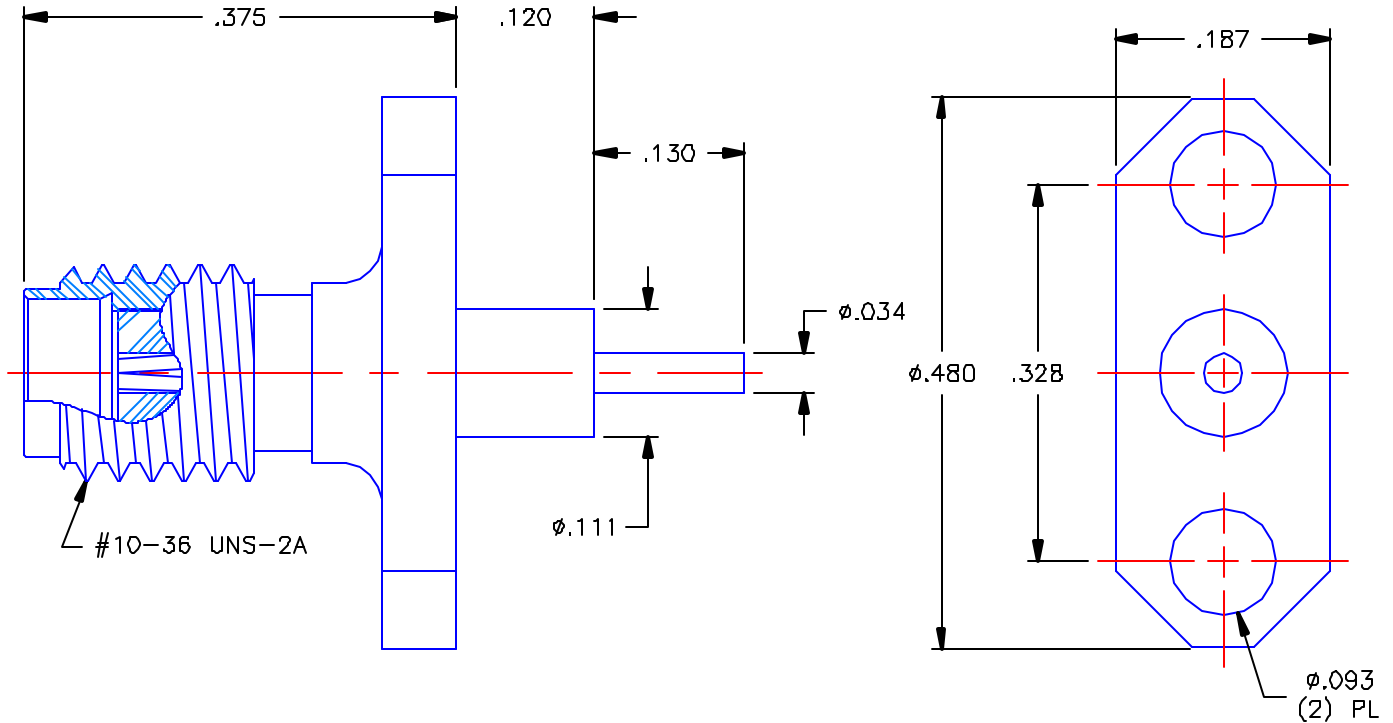


REVISIONS			
REV	DESCRIPTION	DATE	APPROVED
-	INITIAL RELEASE	02/24/05	D.N.



PROPRIETARY INFORMATION  
 NOT TO BE RELEASED  
 WITHOUT WRITTEN PERMISSION  
 FROM AN AUTHORIZED  
 REPRESENTATIVE OF  
 APPLIED ENGINEERING PRODUCTS


**NOTES:**

**MATERIALS:**

1. BODY = STAINLESS STEEL PER ASTM A582, ALLOY 303, CONDITION "A".
2. INSULATOR = VIRGIN WHITE TEFLON PER ASTM D1710, GRADE 1, TYPE I, CLASS "B".
3. CONTACT = BERYLLIUM COPPER PER ASTM B196, ALLOY C17300, TEMPER TD04.

**FINISHES:**

1. BODY = PASSIVATE PER QQ-P-35, TYPE VI.
2. CONTACT = GOLD PLATE PER MIL-G-45204, TYPE II, CLASS 1, GRADE C, OVER .00010 TO .00020 STRESS FREE SULFAMATE NICKEL PER QQ-N-290.

UNLESS OTHERWISE SPECIFIED DIMENSIONS ARE IN INCHES TOLERANCES ON		DWN:	DATE	 <b>APPLIED ENGINEERING PRODUCTS</b> 104 John W Murphy Dr. New Haven, CT 06513								
		D.N.	02/23/05									
DECIMAL	ANGLE	CHKD:	DATE	<b>SSMA STRAIGHT JACK          2 HOLE FLANGE MOUNT          RECEPTACLE</b>								
		A.D.M.	02/24/05									
REFERENCE:		APVD:	DATE	<table border="1"> <tr> <td>SIZE</td> <td>FSCM NO.</td> <td>DWG. NO.</td> <td>REV</td> </tr> <tr> <td>A</td> <td>19505</td> <td>9760-9113-001</td> <td>-</td> </tr> </table>	SIZE	FSCM NO.	DWG. NO.	REV	A	19505	9760-9113-001	-
		SIZE	FSCM NO.		DWG. NO.	REV						
A	19505	9760-9113-001	-									
ORIGINATOR: D.N. DATE: 02/23/05		MATERIALS & FINISHES: SEE NOTES		SCALE 6:1								
				SHEET 1 OF 1								

9760-9113-001