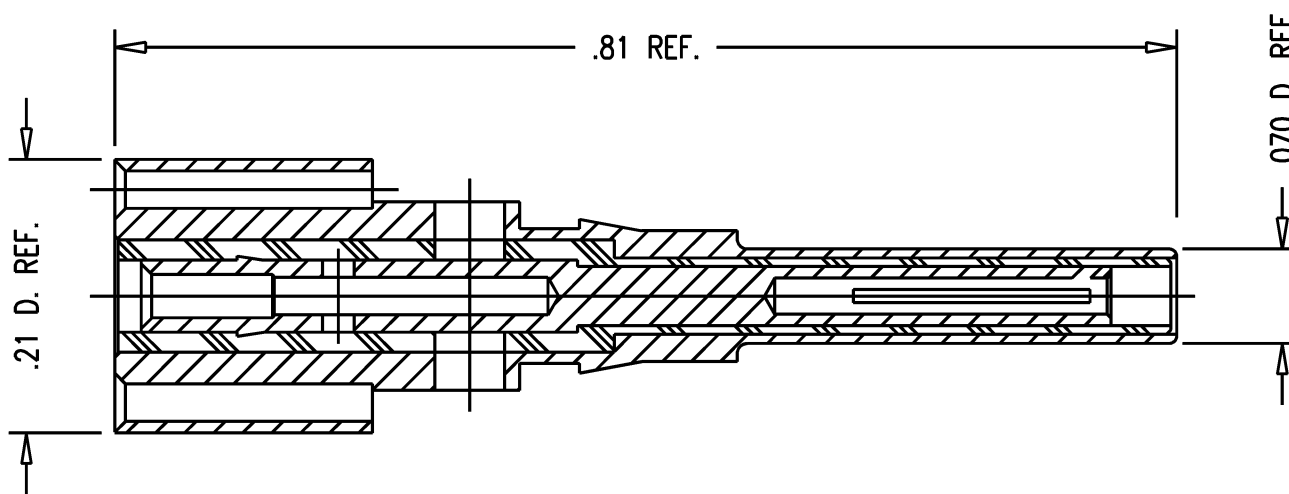


GSD

2945-1-4

REVISIONS	
ISSUE	CHANGES
1	CN 29446 D AJ 01/14/88
2	CN 35045 C KVH 04/20/94



JCA4050

NOTES:

1. FOR USE WITH 24 AWG STRANDED WIRE.
2. FOR CABLING INSTRUCTION SEE 3-349.
3. FOR CRIMPING USE DIE KTH-2168.
4. MATERIALS:
 INSULATOR: DELRIN
 CENTER CONTACT: BER. COP., ASTM-B-196
 INTERMEDIATE CONTACT: BRASS, ASTM-B16
5. FINISHES:
 ALL OTHER METAL PARTS: HARD GOLD PLATE PER MIL-G-45204

SCALE 6:1

APPROX SURFACE AREA

WAS: E-14016

USED ON

REF:

COAX PIN,
FULL CRIMP, MDB

DRAWN	JCA	DATE	07/13/93
-------	-----	------	----------

DESIGN	VLS	DATE	07/13/93
--------	-----	------	----------

APPR.		DATE	
-------	--	------	--

KINGS
ELECTRONICS CO., INC.
TUCKAHOE, NEW YORK 10707

GSD

2945-1-4