

# Customer Information Sheet

DRAWING No.: H05-731XX91

SHEET 2 OF 2 IF IN DOUBT - ASK

©

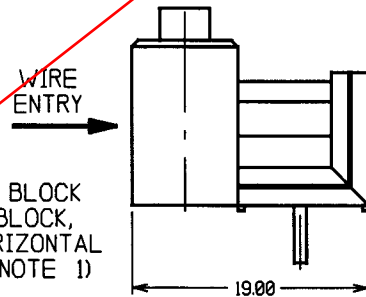
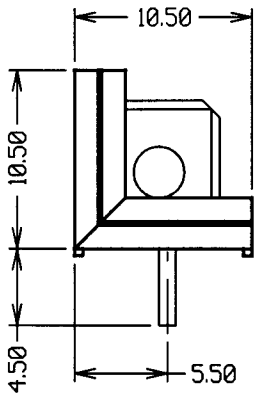
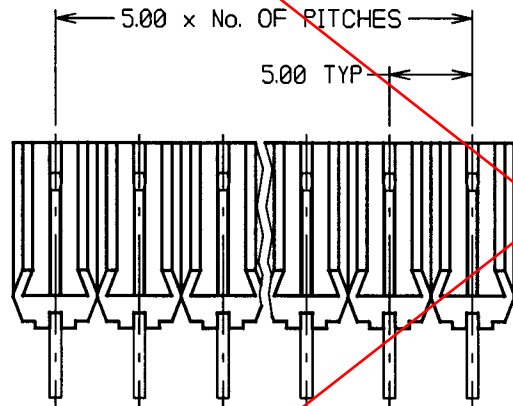
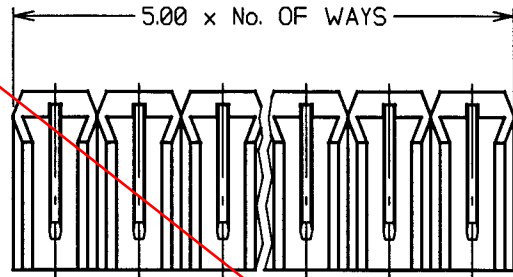
NOT TO SCALE

THIRD ANGLE PROJECTION

ALL DIMENSIONS IN mm

ORDER CODE:  
**H05-731XX91**

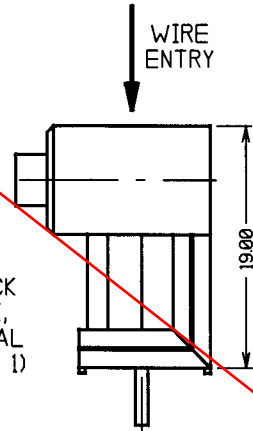
No. OF WAYS   
01 - 36



FEMALE TERMINAL BLOCK  
WITH MALE PCB BLOCK,  
MATED TO GIVE HORIZONTAL  
ORIENTATION (SEE NOTE 1)

**OBSOLETE**

FEMALE TERMINAL BLOCK  
WITH MALE PCB BLOCK,  
MATED TO GIVE VERTICAL  
ORIENTATION (SEE NOTE 1)



**NOTES:**

1. TO BE USED MATED VERTICALLY OR HORIZONTALLY WITH FEMALE TERMINAL BLOCK H05-730XX91 (SEE DIAGRAM).
2. RECOMMENDED PCB HOLE =  $\varnothing 1.30\text{mm}$ .
3. CAN BE CUT TO LENGTH REQUIRED.

**SPECIFICATIONS:**

**MATERIALS:**

MOULDING = FLAME RETARDANT POLYCARBONATE UL94V-0  
TERMINAL = BRASS

**FINISH:**

TERMINALS = 50 TIN OVER NICKEL

**ELECTRICAL:**

CURRENT RATING = 16A  
VOLTAGE RATING = 380V  
DIELECTRIC STRENGTH = 5KV MIN  
INSULATION RESISTANCE = 40 MEGOHM MIN

**ENVIRONMENTAL:**

TEMPERATURE RANGE = -20°C TO +125°C  
SHORT TERM TEMPERATURE = 160°C

2	15.12.98	4683
ISS.	DATE	C/N
APPROVED: <i>[Signature]</i>		
CHECKED: <i>[Signature]</i>		
DRAWN: V. J. BOURNE		
CUSTOMER REF.		
ASSEMBLY DRG:		

**HARWIN**

HARWIN INC  
U.S.A.  
TEL: (812) 285 0055  
FAX: (812) 285 0056

HARWIN PLC  
U.K.  
TEL: 01705 370451  
FAX: 01705 314590

HARWIN PTE  
SINGAPORE  
TEL: 65 7794909  
FAX: 65 7793868

**TOLERANCES**  
X. -  $\pm 1\text{mm}$   
X.X -  $\pm 0.25\text{mm}$   
X.XX -  $\pm 0.10\text{mm}$   
X.XXX -  $\pm 0.01\text{mm}$   
ANGLES -  $\pm 1^\circ$   
UNLESS STATED

**MATERIAL:**  
SEE ABOVE

**FINISH:** SEE ABOVE

**S/AREA:** mm<sup>2</sup>

**TITLE:** 5mm PITCH MALE  
PCB BLOCK  
(MODULAR)

**DRAWING NUMBER:**  
**H05-731XX91**

SHT  
2  
OF  
2