

# LGC-100 SERIES

(JIS C5976: F01 Type)  
Single-Core Optical Fiber Connector

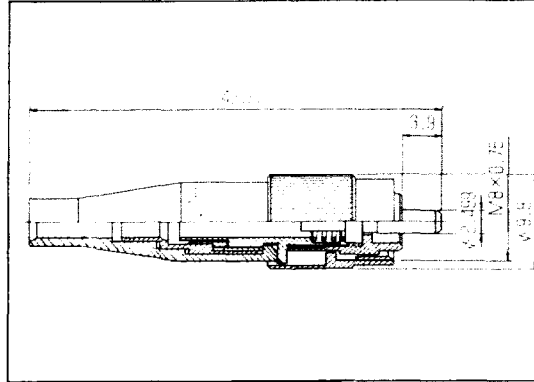
- These are the FC type optical connectors.
- These connectors are compatible mainly with the quartz type multi-mode optical fiber, multi-component multi-mode optical fiber, and quartz type single mode optical fiber to be used in optical transmission lines.

## Key specifications

Item (condition)		Standard value
Insertion loss	Plug 50/125G I surface grinding	0.7dB or less (average 0.30dB)
	50/125G I projected spherical grinding	0.3dB or less (average 0.12dB)
	10/125SM projected spherical grinding	0.5dB or less (average 0.16dB)
Adaptor	50/125G I surface grinding	0.7dB or less (average 0.29dB)
	10/125SM projected spherical grinding	0.4dB or less (average 0.12dB)
Return loss	Plug 50/125G I projected spherical grinding	25dB or more (average 28.6dB)
	10/125SM projected spherical grinding	22dB or more (average 31.2dB)
Compatible optical fiber cords		OFC2.8-Y-SSM-10/125 (JISC6820) OFC2.8-Y-SG I -50/125 (JISC6820)

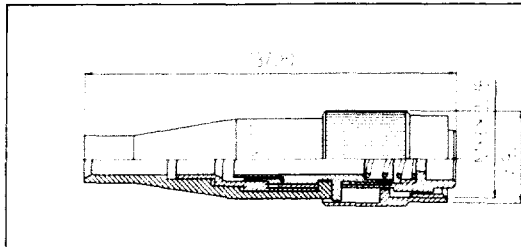
Note: The value for 50/125GI is obtainable in the static mode measurement.

## PLUG



Part No.	JIS No.	Components
LGC-P104	CNF01SPM124C11	LGC-PH+LGC-PF4
LGC-P106	CNF01SPM126C11	LGC-PH+LGC-PF6
LGC-P108	CNF01SPM128C11	LGC-PH+LGC-PF8
LGC-PS103	CNF01SPM123B11	LGC-PH+LGC-PFS3
LGC-PS104	CNF01SPM124B11	LGC-PH+LGC-PFS4
LGC-PS105	CNF01SPM125B11	LGC-PH+LGC-PFS5
LGC-PS106	CNF01SPM126B11	LGC-PH+LGC-PFS6
LGC-PS107	CNF01SPM127B11	LGC-PH+LGC-PFS7
LGC-PS108	CNF01SPM128B11	LGC-PH+LGC-PFS8

## PLUG HOUSING

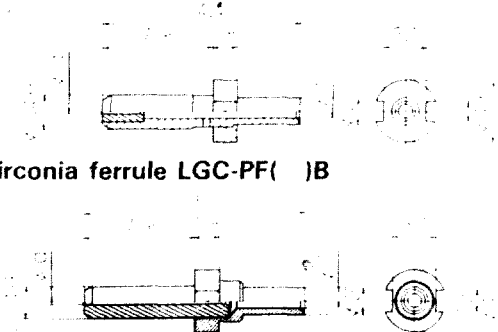


Part No.	Description
LGC-PH	FC-AP connecting plug housing

## FERRULE

- Capillary type ferrule LGC-PF( )

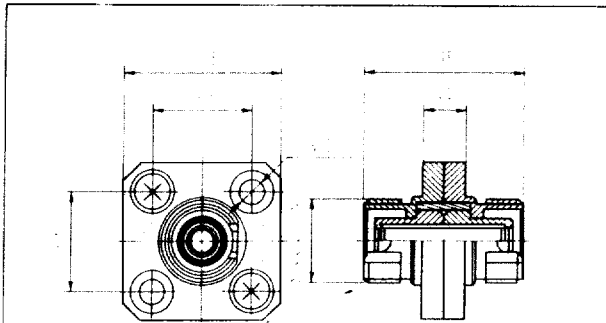
- Zirconia ferrule LGC-PF( )B



Part No. (Note)	Description	φd(mm)
LGC-PF4	FC-PF No. 4 ferrule	0.124
LGC-PF6	FC-PF No. 6 ferrule	0.126
LGC-PF8	FC-PF No. 8 ferrule	0.128
LGC-PFS3	FC-PFS No. 3 ferrule	0.123
LGC-PFS4	FC-PFS No. 4 ferrule	0.124
LGC-PFS5	FC-PFS No. 5 ferrule	0.125
LGC-PFS6	FC-PFS No. 6 ferrule	0.126
LGC-PFS7	FC-PFS No. 7 ferrule	0.127
LGC-PFS8	FC-PFS No. 8 ferrule	0.128

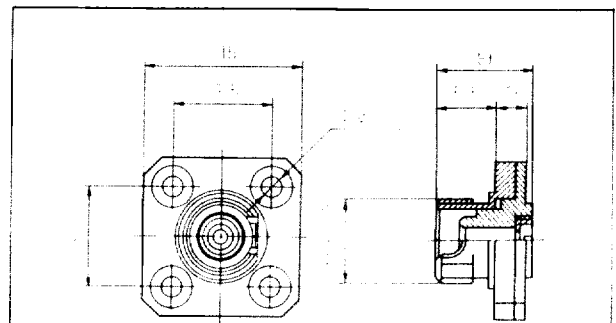
Note: The part number for the zirconia ferrule is to be affixed with "B" as suffix.

## ADAPTOR



Part No.	Description	JIS No.
LGC-A101	FC-AP connecting adaptor	CNF01PAFB

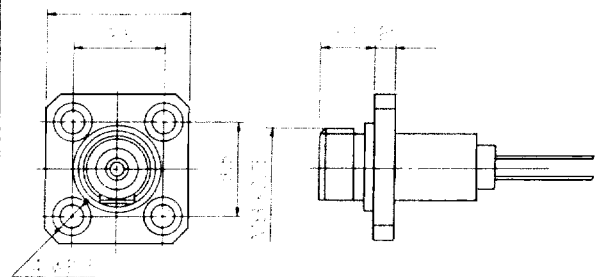
## RECEPTACLE



Part No.	Description
LGC-R101	FC-R receptacle

## LIGHT EMITTING ELEMENT MODULE

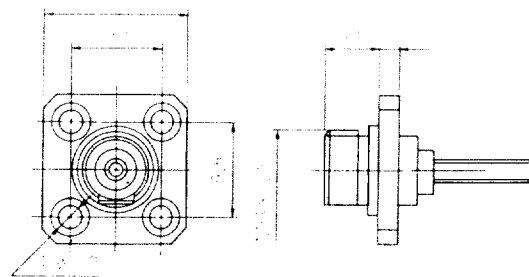
### ● LGC-M100ED08-01



Item	Performance	Conditions
Fiber connected light output	70 $\mu$ W	$I_f=100\text{mA}$ , 50/125G1 1m
Wavelength (center)	850nm	
Forward voltage	2V	
Spectrum half-value width	45nm	$I_f=100\text{mA}$
Forward current	150mA	
Backward voltage	2V	
Operating temperature	-10~60°C	

## LIGHT RECEIVING ELEMENT MODULE

### ● LGC-M100P108-01



Item	Performance	Conditions
Quantum efficiency	85%	$V_R=10\text{V}$ , $\lambda=850\text{nm}$
Rise time	1 ns	$V_R=10\text{V}$ , $\lambda=850\text{nm}$
Fall time	1 ns	$R_L=50\Omega$
Dark current	1 nA	$V_R=10\text{V}$
Capacity between terminals	2 pF	$V_R=10\text{V}$ , $f=1\text{MHz}$
Wavelength range	500-1100nm	
Forward current	100mA	
Backward voltage	100V	
Operating temperature	-10~60°C	

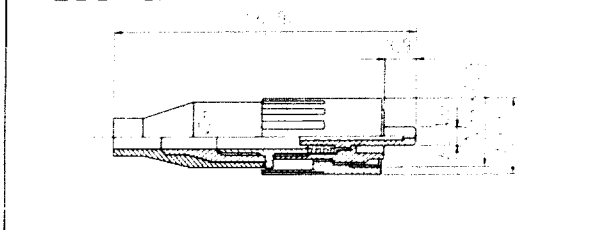
# LGC-200 SERIES

- Light weight, low cost optical connectors made by precision molding.  
Interchangeable with the LGC-100 series connectors.  
Key specifications

Item	Standard value
Insertion loss	1.0dB or less (average 0.5dB)
Compatible optical fiber cord	OFC2, B-Y-SG1-50/125(JISC6820)

## PLUG

### ● LGC-P201



## ADAPTOR

### ● LGC-A201

