

### Features

- Snap on mate
- Edge card SMT jacks & plugs available in tape & reel
- Conforms to CECC 22000 specifications

### Benefits

- Positive tactile feedback at mate
- Adaptable to high volume applications
- Interchangeable with competitors who conform to CECC 22000 specifications

### Applications

- Wireless LANs
- PCMCIA cards
- RF test ports
- Base stations

### Characteristics

#### Electrical

##### VSWR

#### CECC 22000

4.4.1

#### Test Requirements

Edge Card SMT 1.40 max  
Cabled 1.35 max

##### Dielectric withstanding voltage (at sea level)

4.4.5

500 VRMS, 50 Hz

##### Insulation resistance

4.4.4

1,000 MΩ min

#### Mechanical

##### Engagement force

4.5.4

3.5 lbs max

##### Disengagement force

4.5.4

1.4 lbs to 3.4 lbs max

##### Contact captivation

4.5.2

2.3 lbs min

##### Durability (matings)

4.7.1

500 cycles min

#### Environmental

##### Temperature range

-55/+155°C

##### Temperature shock

4.6.7

In conformance

##### Vibration

4.6.3

In conformance

#### Materials

##### Bodies

#### Material

Brass

#### Plating

Gold

##### Male contacts

Brass

Gold

##### Female Contacts

Beryllium copper

Gold

##### Insulators

PTFE

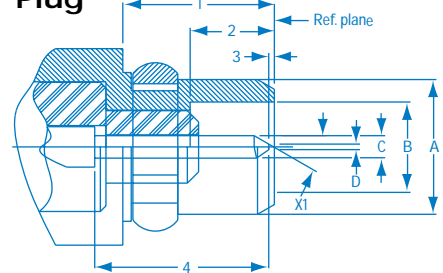
---

These characteristics are typical and may not apply to all connectors.  
All dimensions in inches (mm).

### Plug

Item	Inch/mm	
	Min	Max
1	.106 (2,70)	----
2	.057 (1,45)	----
3	.000 (0,00)	.010 (0,25)
4	----	.124 (3,15)
A	----	.095 (2,40)
B	.062 (1,58)	.064 (1,62)
C	.015 (0,38)	.017 (0,42)
D	----	.008 (0,20)
X1	29°	31°

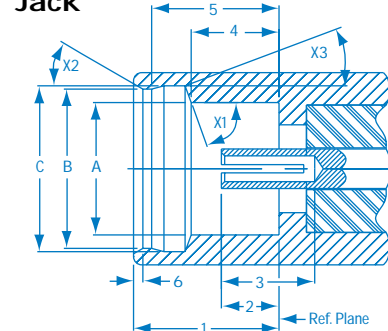
### Plug



### Jack

Item	Inch/mm	
	Min	Max
1	.102 (2,60)	----
2	.035 (0,90)	.047 (1,20)
3	.055 (1,40)	----
4	.062 (1,57)	.064 (1,63)
5	.091 (2,30)	.092 (2,34)
6	----	.009 (0,23)
A	.095 (2,41)	----
B	.113 (2,88)	.114 (2,90)
C	.118 (3,00)	.120 (3,04)
X1	68°	72°
X2	28°	32°

### Jack



**RADIALL®**

260 Hathaway Drive

Stratford, CT 06615

Tel: 203-380-9800

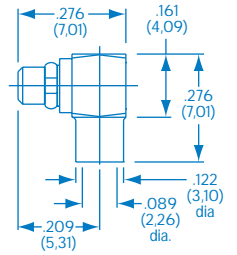
Fax: 888-387-0001

www.radiallusa.com

# MMCX Plugs, Jacks & Receptacles

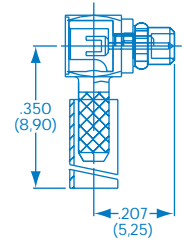
## Right Angle Plug, Solder Type, For .085 Cable

Cable Part number  
 .085 R110.153.000



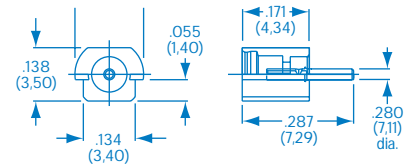
## Right Angle Plug, Crimp Type, For RG178 Cable

Cable Part number  
 2,0/50 S-BR R110.170.100



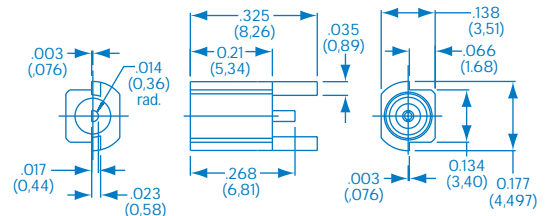
## SMT Jack Receptacle, PCB Edge Card

Part number  
 R110.422.100



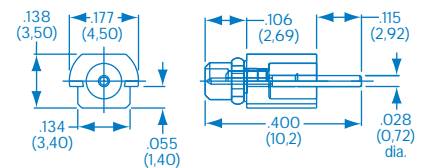
## SMT Jack Receptacle, PCB Edge Card, Offset

Part number  
 R110.422.200



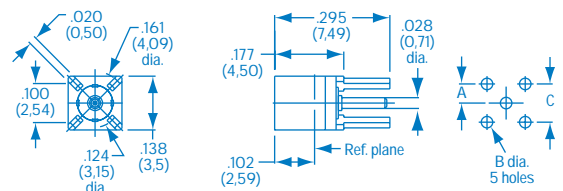
## SMT Plug Receptacle, PCB Edge Card

Part number  
 R110.423.100



## Jack Receptacle, PCB Thru-Hole

Part number  
 R110.426.000



Note: Connector configurations other than those pictured are available upon request.

For dimensions and assembly instructions request the technical data sheet.