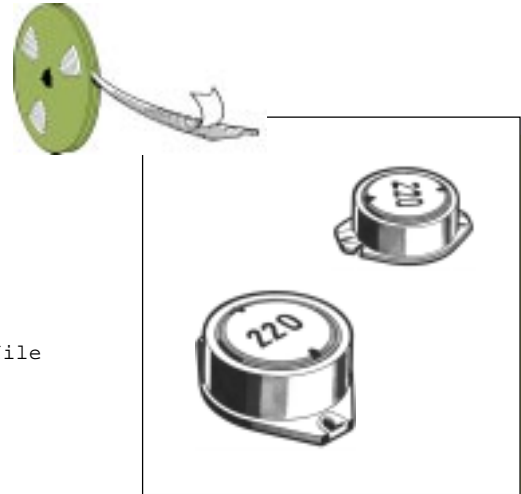


Power Choke SMD

high current winding - shielded

Key features

- high current capability
- available in E12 series values
- ferrite core
- up to 3.1 amps
- down to only 2.4mm height profile
- four styles available
- taped and reeled
- high reliability



type 3630 series

The 3630 is a power choke offered in three convenient sizes. Careful selection of materials ensures high reliability and repeatability. Values from 5 μ H to 390 μ H and very good Q values make this Series the "Designer Choice".

Power Inductors SMD

Specification

Electrical ~ Package A

Inductance Code	Inductance (μ H)	Tolerance (\pm %)	Q Min	LQ Test Freq. (MHz)	S.R.F. (MHz) Min.	Rdc Max (Ω)	Idc (A) Max
5R0	5.0	20	20	7.96	50	0.080	1.70
7R5	7.5	20	20	7.96	40	0.100	1.40
100	10.0	20	38	2.52	32	0.120	1.20
120	12.0	20	38	2.52	28	0.150	1.10
150	15.0	20	38	2.52	25	0.170	1.00
180	18.0	15	35	2.52	23	0.190	0.90
220	22.0	15	30	2.52	22	0.250	0.80
270	27.0	15	28	2.52	18	0.270	0.70
330	33.0	15	26	2.52	17	0.300	0.65
390	39.0	15	26	2.52	16	0.380	0.60
470	47.0	10	24	2.52	14	0.460	0.55
560	56.0	10	24	2.52	12	0.600	0.50
680	68.0	10	22	2.52	11	0.700	0.45
820	82.0	10	20	2.52	10	0.800	0.40

Specification

Electrical ~ Package B

Inductance Code	Inductance (μ H)	Tolerance (\pm %)	Q Min	LQ Test Freq. (MHz)	S.R.F. (MHz)	Rdc Max (Ω)	Idc (A) Max
2R2	2.2	20	18	7.96	75.0	0.040	2.50
3R9	3.9	20	20	7.96	50.0	0.055	2.10
5R6	5.6	20	20	7.96	40.0	0.065	1.95
8R2	8.2	20	19	7.96	32.0	0.080	1.75
100	10.0	20	40	2.52	28.0	0.100	1.50
120	12.0	20	40	2.52	24.0	0.120	1.40
150	15.0	20	40	2.52	22.0	0.140	1.30
180	18.0	15	40	2.52	19.0	0.160	1.20
220	22.0	15	38	2.52	17.0	0.180	1.10
270	27.0	15	35	2.52	15.5	0.200	1.00
330	33.0	15	40	2.52	13.5	0.240	0.92
390	39.0	15	35	2.52	12.0	0.260	0.84
470	47.0	10	32	2.52	10.5	0.280	0.75
560	56.0	10	30	2.52	9.5	0.380	0.68
680	68.0	10	28	2.52	9.0	0.440	0.60
820	82.0	10	28	2.52	8.5	0.550	0.54
101	100.0	10	45	0.796	7.5	0.600	0.50
121	120.0	10	42	0.796	7.0	0.750	0.45

sales action desk (01793) 611666
 sales fax line (01793) 611777
 e-mail sales@megelec.co.uk

Specification

Electrical ~ Package C

Inductance Code	Inductance (μ H)	Tolerance (\pm %)	Q Min	LQ Test Freq. (MHz)	S.R.F. (MHz) Min.	Rdc Max (Ω)	Idc (A) Max
2R2	2.2	20	25	7.96	90.0	0.027	3.10
3R0	3.0	20	25	7.96	80.0	0.030	2.90
4R7	4.7	20	25	7.96	50.0	0.040	2.50
7R0	7.0	20	22	7.96	32.0	0.055	2.20
100	10.0	20	48	2.52	30.0	0.065	2.00
120	12.0	20	45	2.52	25.0	0.080	1.80
150	15.0	20	40	2.52	20.0	0.085	1.70
180	18.0	15	35	2.52	19.0	0.092	1.60
220	22.0	15	42	2.52	18.0	0.100	1.40
270	27.0	15	40	2.52	17.0	0.120	1.30
330	33.0	15	40	2.52	15.0	0.160	1.20
390	39.0	15	40	2.52	13.0	0.180	1.05
470	47.0	15	35	2.52	12.0	0.190	1.00
560	56.0	15	35	2.52	11.0	0.210	0.90
680	68.0	15	35	2.52	9.0	0.340	0.82
820	82.0	15	35	2.52	8.0	0.380	0.75
101	100.0	10	35	0.796	7.5	0.420	0.68
121	120.0	10	30	0.796	7.2	0.460	0.60
151	150.0	10	28	0.796	6.2	0.520	0.55
181	180.0	10	28	0.796	5.8	0.700	0.50
221	220.0	10	30	0.796	5.2	0.800	0.45
271	270.0	10	30	0.796	4.8	1.100	0.40
331	330.0	10	30	0.796	4.5	1.200	0.35
391	390.0	10	25	0.796	4.2	1.400	0.33

Specification

Tape and Reel Specification

Package A ~ 1000 pieces per 13" Reel

Package B ~ 1000 pieces per 13" Reel

Package C ~ 600 pieces per 13" Reel

Temperature Rise:

40°C maximum

Storage Temperature:

-25°C to +85°C

Operating Temperature:

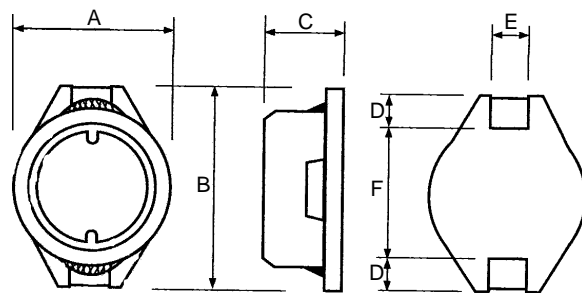
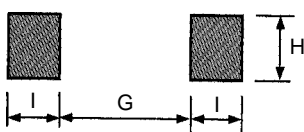
-20°C to +80°C

Resistance To Solder Heat:

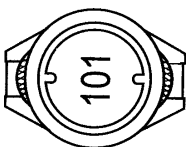
260°C for 10 seconds maximum

Dimensions

Pad Layout



Marking



Package	A \pm 0.2	B \pm 0.2	C \pm 0.3	D \pm 0.2	E \pm 0.2	F \pm 0.3	G	H	I
A	8.0	10.5	3.7	2.1	2.0	6.0	5.7	2.2	2.4
B	8.0	10.5	4.5	2.1	2.0	6.0	5.7	2.2	2.4
C	10.0	12.7	4.9	2.4	2.5	7.6	7.3	2.8	3.0

How to Order

3630	A	1R5	M
Common Part	Package Size	Inductance Code	Tolerance
3630 - High Current Choke	A - 8.0 x 10.0 x 4.0mm High B - 8.0 x 10.0 x 5.0mm High C - 10.0 x 13.0 x 5.0mm High	See relevant table for inductance code	K - \pm 10% Y - \pm 15% M - \pm 20%