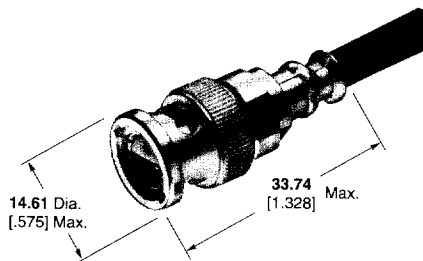


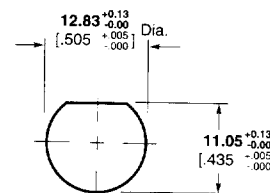
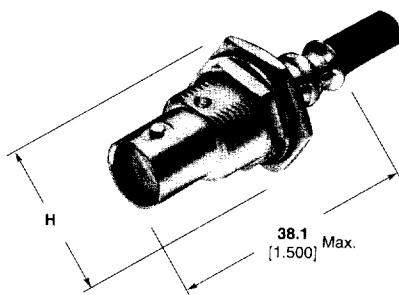
Twin BNC Connectors (Continued)

Plugs



RG/U Cable	Center Contact Plating	Body Plating	Dielectric	Integral Die Hand Tool	Part No.
108, 108A	Silver	Silver	TEFLON	69667	332225
Belden 9272, 89272	Silver	Nickel	Polypropylene	69667	332225-5
Trompeter TWC-124-2	Silver	Silver	TEFLON	69667	332225-3
ROLM 49D2401 Raychem 7824D013	Silver	Nickel	Polypropylene	69667	332225-6

Bulkhead Jack



Maximum Panel Thickness 3.18 [.125]

Recommended Panel Cutout

H = 17.45 [.687] Max. across flats, 20.32 [.800] Max. across points

RG/U Cable	Center Contact Plating	Body Plating	Dielectric	CERTI-CRIMP Hand Tool with Integral Die	Integral Die Hand Tool	Die Insert for Tools: Hand Tool-69710-1, 626 Pneu. Head 318161-1	Part No.
108, 108A Belden 9272, 89272	Silver	Silver	TEFLON	—	69667	69708	332342