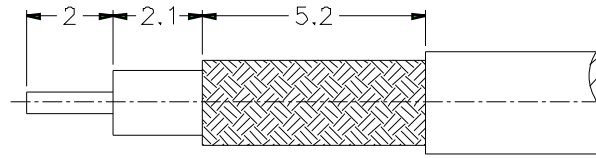
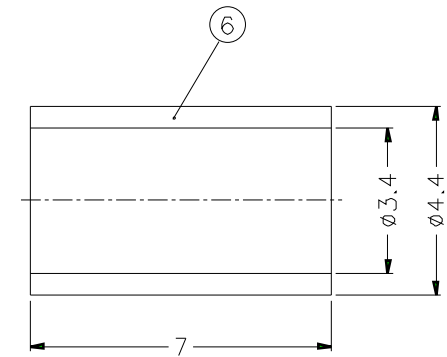
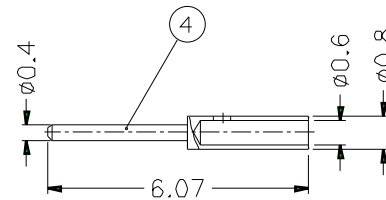
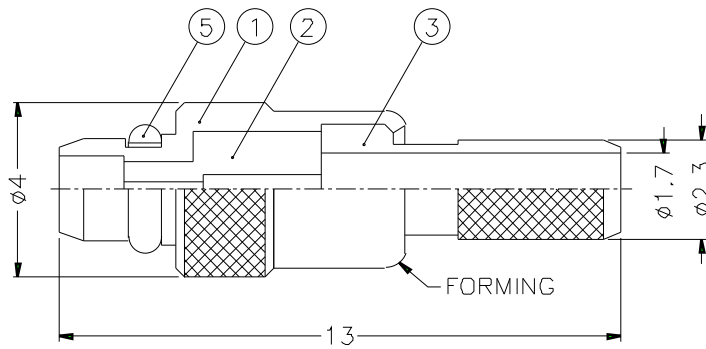


1		2		3		4		5		6		7		8	
REVISIONS															
ISS	ZONE	DESCRIPTION\PER REQUEST\DATE													



RECOMMENDED
CABLE STRIPPING DIM'S



1. CRIMPED FERRULE
HEX CRIMP SIZE .151"

NOTES: FINISH (PLATING THICKNESS IN MICRO-INCHES)

1. BRASS PER QQ-B-626
2. GOLD PL. 3 MIN. THICK OVER NICKEL PL. 100 MIN. THICK OVER COPPER STRIKE
3. BERYLLIUM COPPER PER QQ-C-530
4. GOLD PL. 30 MIN. THICK OVER NICKEL PL. 100 MIN. THICK OVER COPPER STRIKE
5. TEFLON MIL-P-19468

NO.	DESCRIPTION	MATERIAL	FINISH	Q'TY	DRAWING NO.	SCALE	6/1	ISSUE	A	FILE NO.	PART NO. MMCX1121A1-3GT30G-5A-50								
6	FERRULE	COPPER	NOTE 2	1	FR-44/34X7C	DIMENSIONS ARE IN MILLIMETERS UNLESS OTHERWISE SPECIFIED TOLERANCES 0.5-6 = ±0.2 6-30 = ±0.4 30-120 = ±0.6 120-315 = ±1 315-1000 = ±1.6 1000-2000 = ±2.4				APPROVED	DATE	Amphenol TITLE MMCX CRIMP PLUG							
5	RETAINER RING	NOTE 3	NOTE 2	1	MMCX1121A1-5-C					CHECKED	DATE					10-11-01'			
4	CONTACT PIN	NOTE 1	NOTE 4	1	MMCX1121A1-4-08/06-B					DRAWN	DATE					10-11-01'			
3	BARREL	NOTE 1	NOTE 2	1	MMCX1121A1-3-23/17					DRAWN				DATE	10-11-01'				
2	INSULATOR	NOTE 5	NATURAL	1	MMCX1121A1-2T-50-B					DRAWN				DATE	10-11-01'				
1	BODY	NOTE 1	NOTE 2	1	MMCX1121A1-1-C					DRAWN				DATE	10-11-01'				
											DRAWING NO. KJ-MMCX1121A1-3GT30G-316U/D-50								
											ITEM NO.								

1	2	3	4	5	6	7	8
---	---	---	---	---	---	---	---