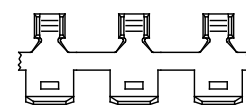
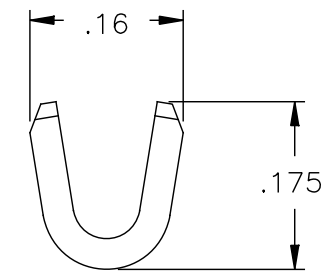
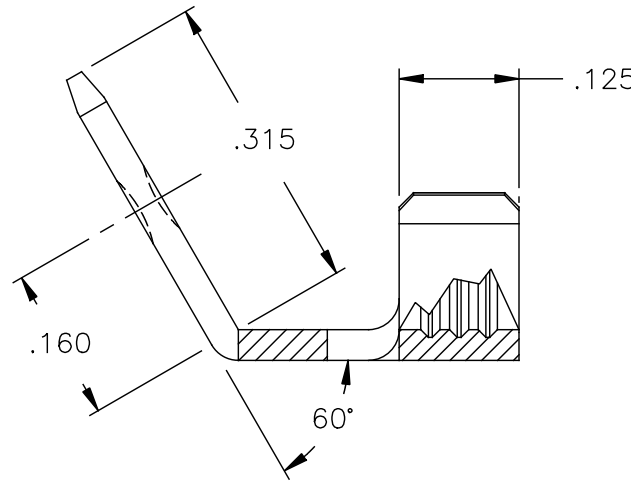
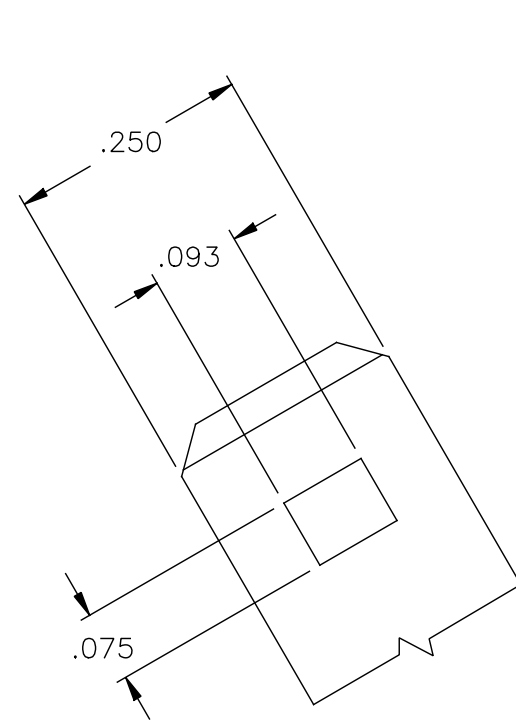
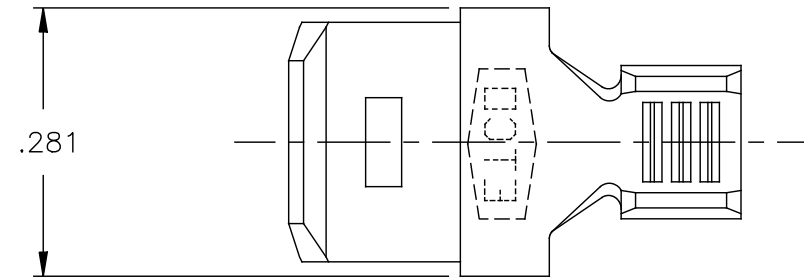


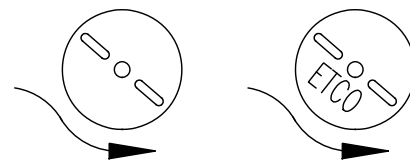
NOTE:  
 1.) MAT'L: .032 THK. BRASS  
 #2 TEMPER (HALF HARD),  
 PER ETCO METAL CODE NO. 00770.  
 2.) WIRE RANGE: 18-14 AWG.

P/C	DESCRIPTION
07961	M210-A-HB

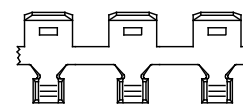
Rev.	Description of Change/ SCN#	Date



DIRECTION EXITING TOOL,  
EARS UP TO THE BACK



FULL VIEW  
REFERENCE ONLY



DIRECTION TOWARD APPLICATOR  
EARS UP TO THE FRONT

# UNCONTROLLED COPY

 THIRD ANGLE PROJECTION TOLERANCES UNLESS OTHERWISE SPECIFIED .XX - ±.030 .XXX - ±.015 Angles - ±5°	TOOL NO. <b>0653</b>	Title: .032 X .250 MALE TAB	
		DO NOT SCALE DWG. ETCO Incorporated Engineered Products 25 Bellows Street Warwick, R.I. 02888 Phone: (401)467-2400 FAX: (401)467-9230	Drawn By: S.C. Johnson Date: 9-21-99 Checked: Scale: 5:1 Size <b>B</b> Dwg. No.: <b>C- M210A</b>

THIS PRINT IS THE PROPERTY OF ETCO INCORPORATED. NO PART OF THIS DESIGN MAY BE USED IN ANY WAY WITHOUT WRITTEN CONSENT FROM ETCO INCORPORATED.

CUSTOMER DRAWING