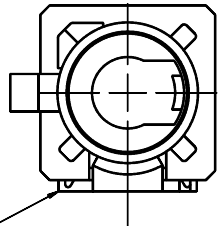


Variable X have to be stated within the drawing number when an order is placed.

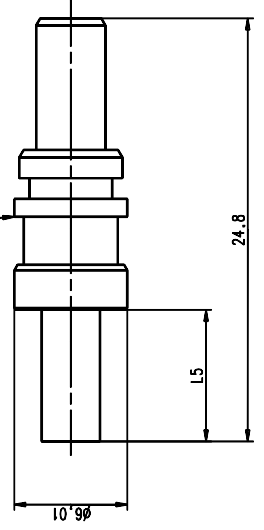
Variable X= Coding

coding X=	A	B	C	D	E	F	G	H	I	J	K	L	M	N
front view														
colour	deep black	cream white	signal blue	bordeaux violet	leaf green	nut brown	blue grey	heather violet	leaf green	beige	curry yellow	carmine red	pastel orange	pastel green

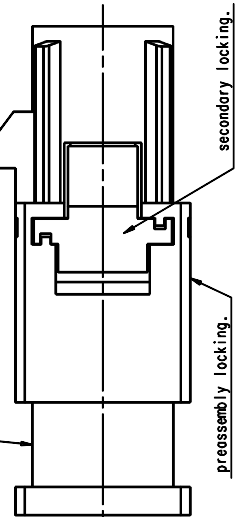
View with preassembled secondary locking and without inserted SMA connector.



Ordering no.: 4101.SMBA.1010.0Y2.99

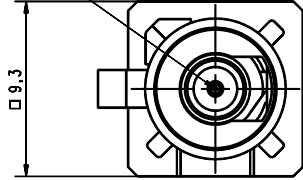


View with preassembled secondary locking and without inserted SMA connector.



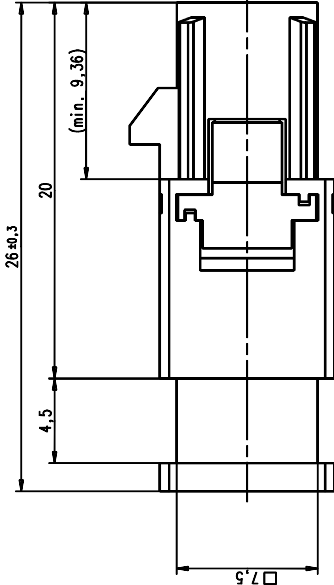
Ordering no.: 4101.SMBA.1X10.0Y2.98

Interface acc. to - DIN 72594



View with inserted SMA connector.

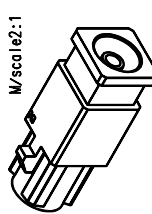
Ordering no.: 3401.SMBA.1X10.0Y2



View with inserted SMA connector.

Plating

Part	Material	Material	9
Plastic Housing	PA 6.6		
Centre Contact	Brass	Au	
Outer Contact	Brass	Ni	
Insulator	PE/PIFE		
Rest	Brass/cooper	Ni	



ISO 2788	ISO 2788	ISO 2788	ISO 2788	ISO 2788
0.5-3.2	0.5-3.2	0.5-3.2	0.5-3.2	0.5-3.2
4-36	4-36	4-36	4-36	4-36
1-3	1-3	1-3	1-3	1-3
1-3	1-3	1-3	1-3	1-3
1-3	1-3	1-3	1-3	1-3

IMS	scale: (2:1)	Assembly instruction: M-XXX
		Stripping dimension: M-XXX
	Kabelstecker	
	Cable mount plug	
	4101.SMBA.1X10.0X9	

Rev.	alteration	date	name

Rev.	