

This drawing is copyright. Information contained thereon is supplied in confidence and must not be used for any other purpose than which it was supplied, or be reproduced without written permission of the owners.

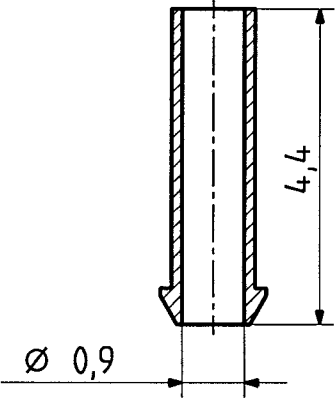
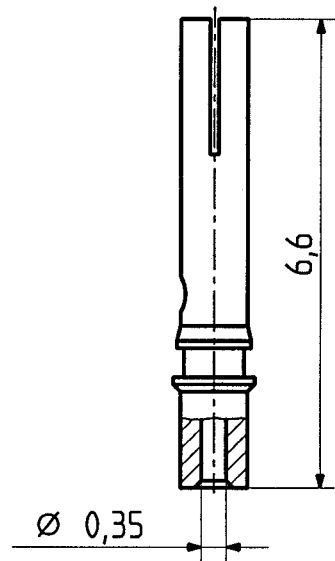
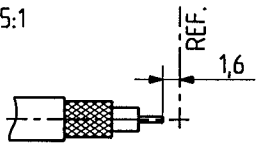
Diese Zeichnung ist unser geistiges Eigentum und darf ohne unsere ausdrückliche Einwilligung weder kopiert, vervielfältigt, noch Dritten oder Konkurrenzfirmen zugänglich gemacht werden.

type : 24 MCX-50-1-13

	date	sign
drawn	28.01.99	4540/PM
checked	30.3.99	4587/LL
approved	22.4.99	4587/LL

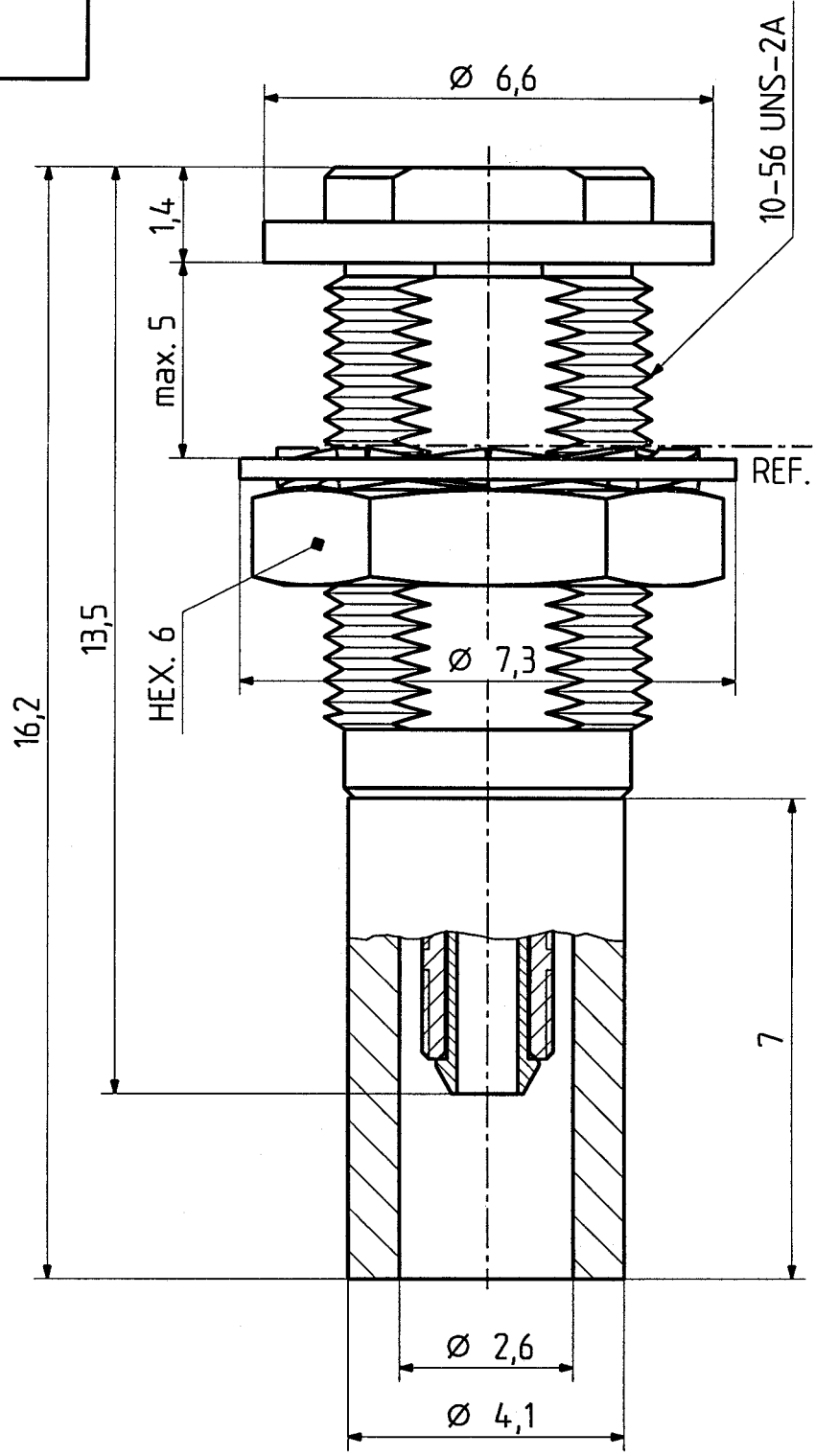
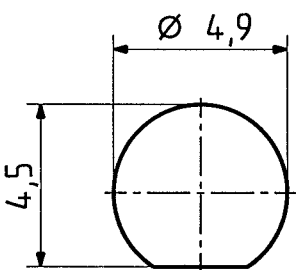
cable shortening dimension

scale 1.5:1



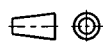
mounting hole

ML 11



H-S 701 448.05

scale  
10:1



HUBER + SUHNER RFX

dimensions in mm

drawing number  
4.13.31367

OZ drawing :

Index  
a

# Assembly instruction

Serie MCX

AC 103.09.02  
4726/KRI

Nr.27317

## Tools and materials required:

Stanley blade  
Scissors  
Crimp tool (see table below)

Straight connectors for flexible cable

Cable entry : SUHNER Full-Crimp

Connector types : (e.g.)

21 MCX 50-1-11

24 MCX 50-1-13

This connector  
in 4 parts  
is supplied

Suitable cables e.g.:

RG 178 B/U

RG 178 B/U

Centre contact :

cavity 1

cavity 1

Braid :

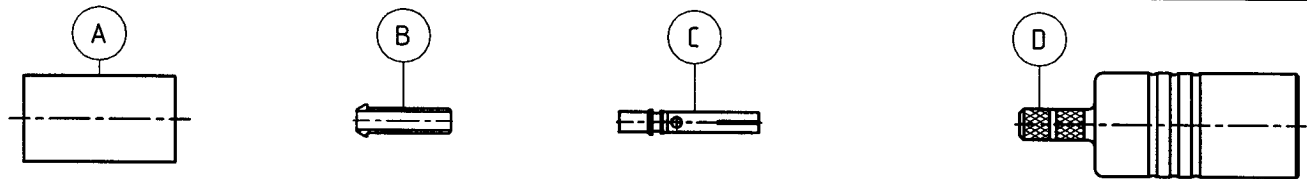
cavity A

cavity A

Crimp tool :

1,2,A (red)

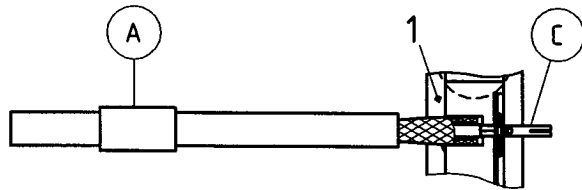
1,2,A (red)



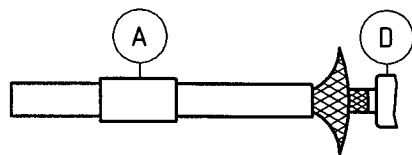
Slide ferrule A onto cable.  
Strip cable according to diagram.  
**CAUTION:** Do not damage braid, dielectric  
and inner conductor of cable!



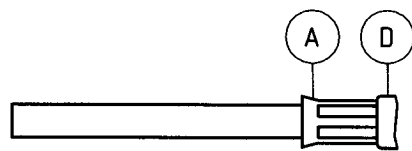
Splay out braid and  
slide ferrule B over cable dielectric.



Push contact C over inner conductor  
of cable up to cable dielectric  
and crimp with cavity 1.



Insert cable in connector body D.  
Make sure that braid lies over the crimp neck.



Slide ferrule A over braid and crimp as  
close to connector body D, as possible.

SUHNER's skilled staff and specialised equipment are available to carry out complete R.F.lead.assembly on your behalf. We mount your connectors on cables at economic prices! Please contact our representative for further details of this service



HUBER + SUHNER AG CH-9100 HERISAU

Deutscher Text: siehe Rückseite

**Article number:**

**Type:**

**SUHNER Type:**

**24 MCX-50-1-13 / 133 NH**

[Picture](#)

Article Number: 22658310

Series: MCX

[EF 178](#) / [RG 178 B/U](#) / [RG 196 A/U](#)

**Cable Type:**

Cable entry: outer contact: crimped  
centre contact: crimped

**Electrical Data:**

Impedance: 50 Ω

Frequency Range: DC ... 6.00 GHz

**Material Data:**

**Material**

**Surface Plating**

Center contact:	Copper-Beryllium	Gold / nickel underplated
Outer contact:	Brass	SUCOPLATE
Body:	Brass	SUCOPLATE
Insulator:	PTFE/PFA	
Fastening nut:	Brass	SUCOPLATE
Washer:	Spring bronze	SUCOPLATE
Crimp ferrule:	Copper	SUCOPLATE

**General Information:**

Interface according to: IEC 60169-36\_CECC 22220

Weight: 1.8 g/0.06 oz

Packaging: Bulk 100 pcs psc

**Attachments:**

Outline drawing: [S31367](#)

Assembly Instruction: [M27317](#)

**Article number:**

**Type:**

**SUHNER Type:**

**24 MCX-50-1-13 / 111 NH**

[Picture](#)

Article Number: 23005299

Series: MCX

[RG 178 B/U](#) / [EF 178](#) / [RG 196 A/U](#)

**Cable Type:**

Cable entry: outer contact: crimped  
centre contact: crimped

**Electrical Data:**

Impedance: 50 Ω

Frequency Range: DC ... 6.00 GHz

**Material Data:**

**Material**

**Surface Plating**

Center contact: Copper-Beryllium

Gold / nickel underplated

Outer contact: Brass

Gold / nickel underplated

Body: Brass

Gold / nickel underplated

Insulator: PTFE/PFA

Fastening nut: Brass

Gold / nickel underplated

Washer: Spring bronze

Gold / nickel underplated

Crimp ferrule: Copper

Gold / not nickel underplated

**General Information:**

Interface according to: IEC 60169-36\_CECC 22220

Weight: 1.8 g/0.06 oz

Packaging: Bulk 100 pcs psc

**Attachments:**

Outline drawing: [S31367](#)

Assembly Instruction: [M27317](#)

**Article number:**

**Type:**

**SUHNER Type:**

**21 MCX-50-1-11 / 133 NH**

[Picture](#)

Article Number: 22658309

Series: MCX

**Cable Type:**

[EF 178](#) , [RG 178 B/U](#) [RG 196 A/U](#)

Cable entry:

outer contact: crimped

center contact: crimped

**Electrical Data:**

Impedance: 50  $\Omega$

Frequency Range: DC ... 6.00 GHz

**Material Data:**

**Material**

**Surface Plating**

Center contact: Copper-Beryllium

Gold / nickel underplated

Outer contact: Brass

SUCOPLATE

Body: Brass

SUCOPLATE

Insulator: PTFE/PFA

Crimp Ferrule: Copper

SUCOPLATE

**General Information:**

Interface according to: IEC 60169-36\_CECC 22220

Weight: 1.5 g/0.05 oz

Packaging: Bulk 100 pcs

**Attachment:**

Outline drawing: [S31366](#)

Assembly Instruction: [M27317](#)

**Article number:**

**Type:**

**SUHNER Type:**

**21 MCX-50-1-11 / 111 NH**

[Picture](#)

Article Number: 23005297

Series: MCX

**Cable Type:**

[RG 178 B/U](#) , [EF 178](#) [RG 196 A/U](#)

Cable entry:

outer contact: crimped

center contact: crimped

**Electrical Data:**

Impedance: 50 Ω

Frequency Range: DC ... 6.00 GHz

**Material Data:**

**Material**

**Surface Plating**

Center contact: Copper-Beryllium

Gold / nickel underplated

Outer contact: Brass

Gold / nickel underplated

Body: Brass

Gold / nickel underplated

Insulator: PTFE/PFA

Crimp Ferrule: Copper

Gold / not nickel underplated

**General Information:**

Interface according to: IEC 60169-36\_CECC 22220

Weight: 1.5 g/0.05 oz

Packaging: Bulk 100 pcs

**Attachment:**

Outline drawing: [S31366](#)

Assembly Instruction: [M27317](#)