

# 10/100 BASE-T SINGLE PORT

ALAN-113

**RoHS**  
Compliant



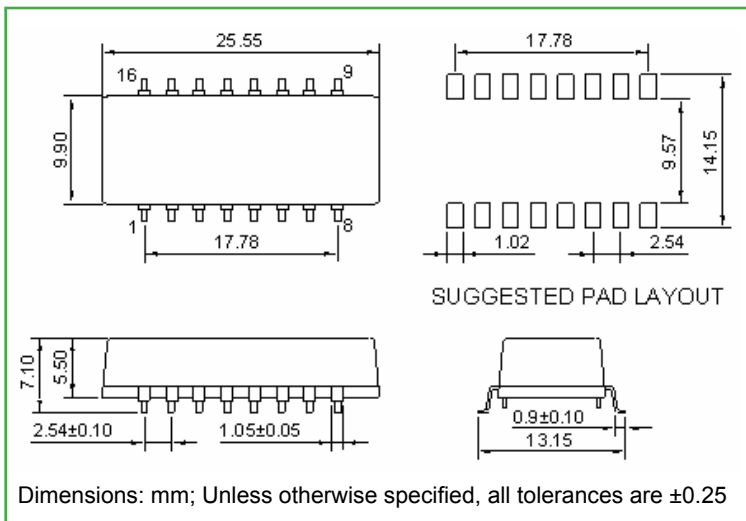
25.55 x 12.6 x 5.9mm

## STANDARD SPECIFICATIONS:

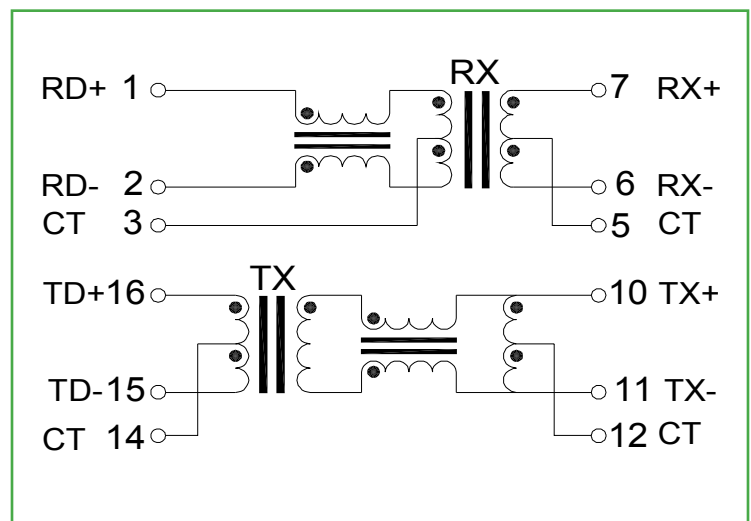
### PARAMETERS

Abrakon P/N:	ALAN-113
Operating Temperature:	-40°C ~ +85°C
Storage Temperature:	-40°C ~ +85°C
Turn Ratio ( $\pm 2\%$ ):	1CT : 1CT
OCL (100kHz/0.1V@8mA):	350 $\mu$ H min.
Insertion Loss :	-1.0dB max. ( 0.1 ~ 100MHz )
Return Loss :	-22dB typ. ( 1 ~ 40MHz ) -18dB typ. ( 50MHz ) -14dB typ. ( 60 ~ 80MHz )
Cross Talk :	-50dB typ. ( 30MHz ) -40dB typ. ( 60MHz ) -40dB typ. ( 100MHz )
CMR :	-45dB typ. ( 30MHz ) -40dB typ. ( 60MHz ) -35dB typ. ( 100MHz )
Hi-pot Test:	1500Vrms/0.5mA/60 seconds or 1650Vrms/0.5mA/2 seconds

## OUTLINE DRAWING:



## SCHEMATIC:



# 10/100 BASE-T SINGLE PORT

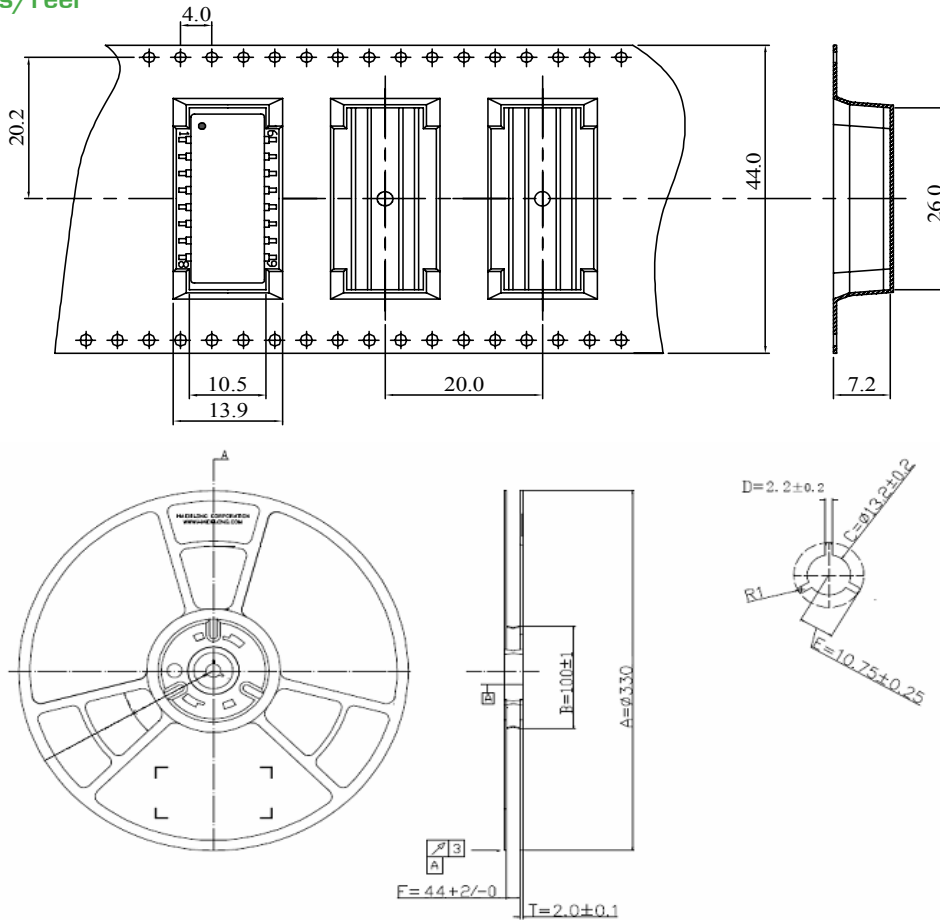
ALAN-113

**RoHS**  
Compliant



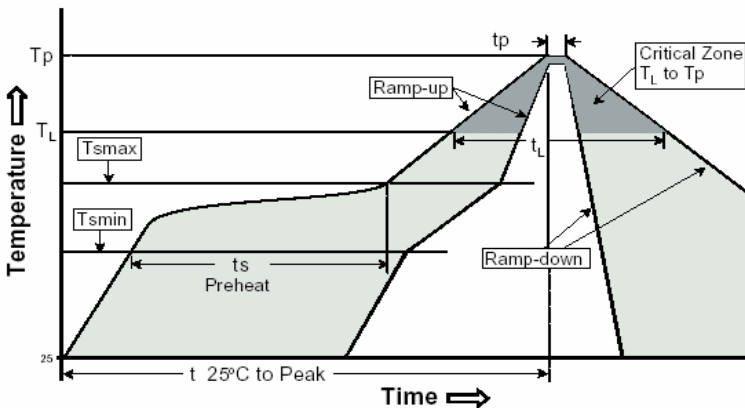
## TAPE & REEL:

Tape & Reel: 400pcs/reel  
Weight: 1.8 g/pcs



Dimensions: mm

## REFLOW PROFILE:



Profile Feature	Pb-Free Assembly
Average Ramp-up Rate (Ts max to Tp)	3°C/second max.
Preheat	
-Temperature min. (Ts min)	150°C
-Temperature max. (Ts max)	200°C
-Time (ts min to ts max)	60 ~ 180 seconds
Time maintained above:	
-Temperature (T <sub>L</sub> )	217°C
-Time (t <sub>L</sub> )	60 ~ 150 seconds
Peak/Classification Temperature (Tp)	245±5°C
Time within 5°C of actual Peak Temperature (tp)	20 ~ 40 seconds
Ramp-down Rate	6°C/second max.
Time 25°C to Peak Temperature	6 minutes max.

**NOTE:** Abracon manufactured products are intended for general commercial and industrial use. For applications requiring high reliability and/or presenting extreme operating environment, written consent & authorization from Abracon is required.

ABRACON IS  
ISO 9001 / QS 9000  
CERTIFIED



Visit [www.abracon.com](http://www.abracon.com) for Terms & Conditions of Sale **Revised: 11.03.09**  
30332 Esperanza, Rancho Santa Margarita, California 92688  
tel 949-546-8000 | fax 949-546-8001 | [www.abracon.com](http://www.abracon.com)