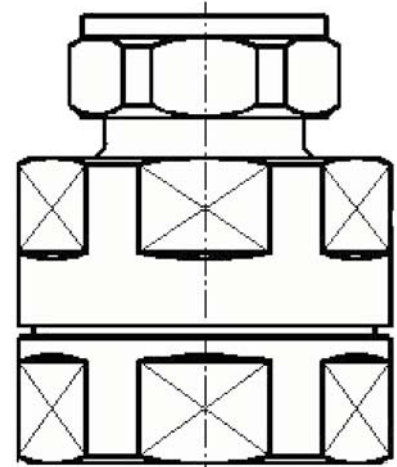


This model was previously released as AAC-11ST-DM-MM

AC-11ST-DM-MM

7/16-DIN Male Connector for 1-1/4" Standard Coaxial Cable

General Characteristics		
Interface	7/16-DIN Male	
Body Style	Straight	
Cable Size	1-1/4"	
Cable Type	Corrugated Cable	
Electrical Characteristics		
Operating Frequency Range	DC-3 GHz	
Impedance	50Ω	
VSWR	≤ 1.15	
Intermodulation (3rd Order)	≤ -160 dBc	
Contact Resistance	Inner Conductor	≤ 0.4 mΩ
	Outer Conductor	≤ 1.5 mΩ
Dielectric Resistance	≥ 10,000 mΩ	
Dielectric Withstanding Voltage (RMS, 50Hz at Sea Level)	≥ 4000 V	
Operating Voltage (At Sea Level, 50Hz AC)	≤ 2700 V	
Environmental Characteristics		
Operating Temperature	-40° C to +85° C	
Mechanical Characteristics		
Durability	≥ 500 Mating Cycles	
Interface	According to IEC 61169-4	
Material Characteristics	Material	Plating
Body	Brass	Tri-Alloy
Insulator	PTFE	---
Center Conductor	Phospor Bronze	Ag



Quoted performance parameters are provided to offer typical, peak or range values only and may vary as a result of normal testing, manufacturing and operational conditions. Extreme operational conditions and/or stress on structural supports is beyond our control. Such conditions may result in damage to this product. Improvements to products may be made without notice.