

SPEC SHEET

# MW500-1211

## 2400 MHz to 2600 MHz

### VOLTAGE CONTROLLED OSCILLATORS



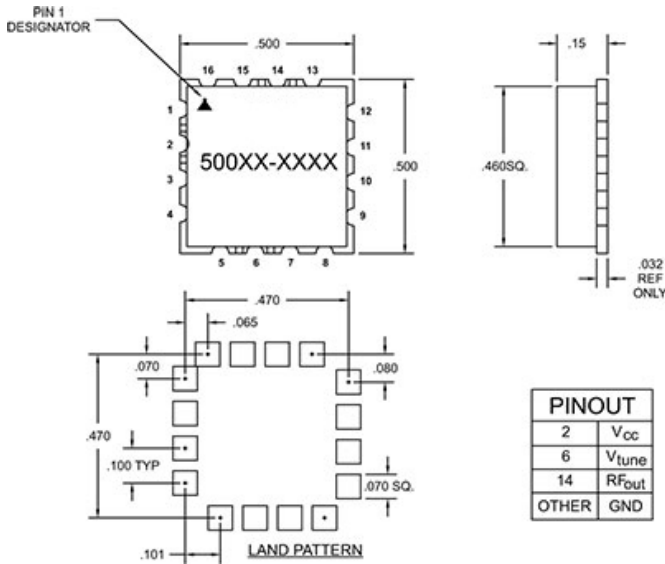
### Specifications

Frequency	2400 MHz to 2600 MHz
Tuning Voltage	0.5/15 V
Power Output	7 +/- 1.5 dBm
Phase Noise	10 kHz Offset -100 (typ) dBc/Hz 100 kHz Offset -121 (typ) dBc/Hz
Frequency Pushing	5 MHz/V
Frequency Pulling	20 MHz
Harmonic Suppression	-15 (MAX)

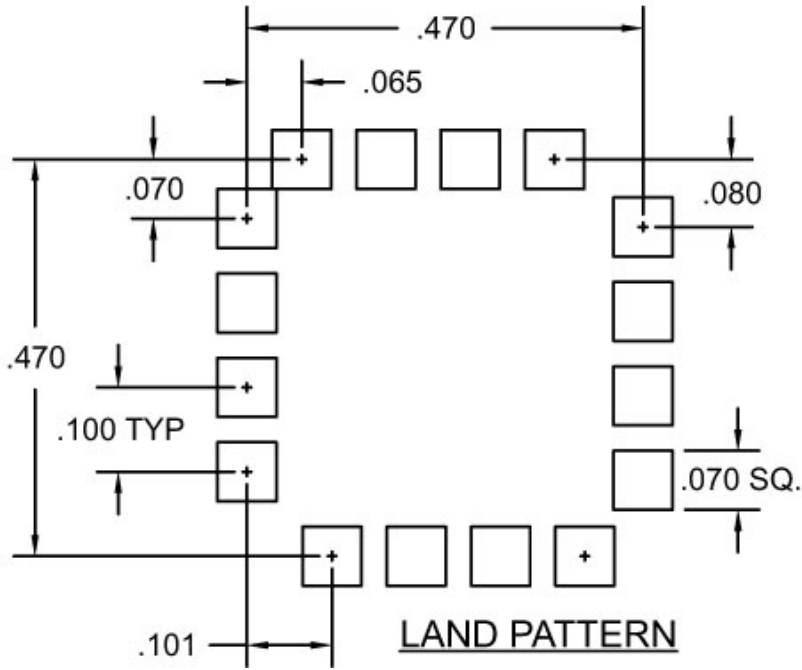
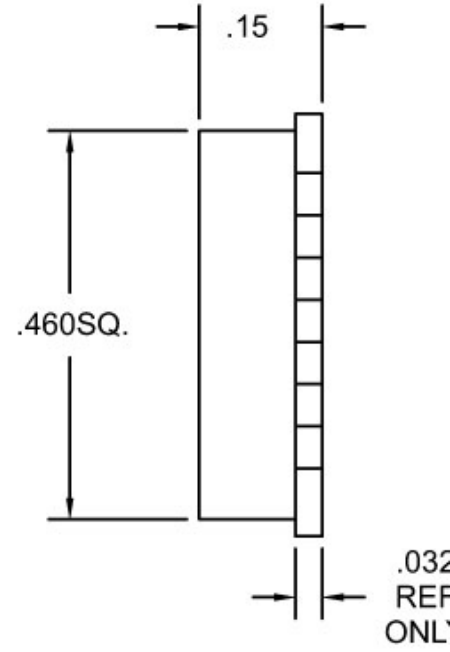
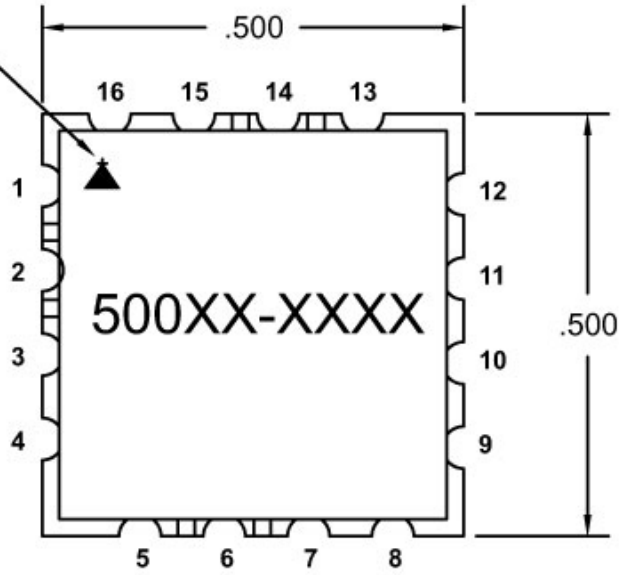
### Operating Specifications

Supply Voltage	5 Vcc
Supply Current	30 mA
Load Impedance	50
Operating Temperature	-30 to 75 °C

### Notes



PIN 1  
DESIGNATOR



PINOUT	
2	V <sub>cc</sub>
6	V <sub>tune</sub>
14	R <sub>Fout</sub>
OTHER	GND