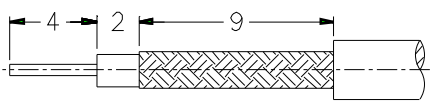
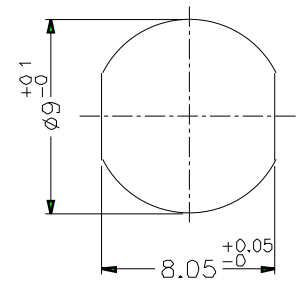


ISS		ZONE	DESCRIPTION\PER REQUEST\DATE
REVISIONS			

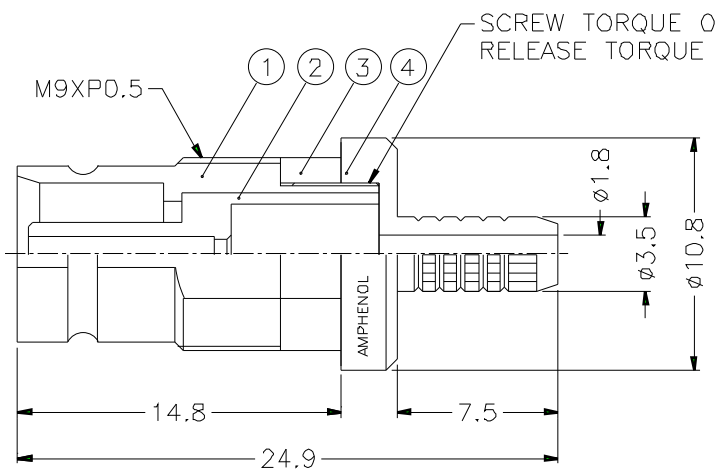
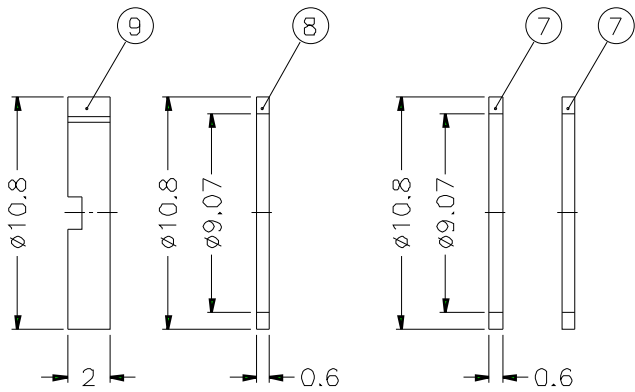


RECOMMENDED CABLE STRIPPING DIM'S

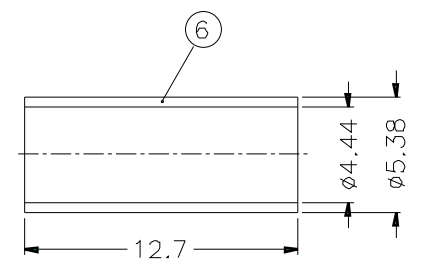
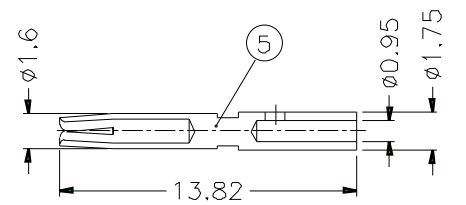


RECOMMENDED MOUNTING HOLE

- CABLE: L910/19
- FERRULE CRIMPING TOOLS P/N 227-944 (M22520/5-01) 227-1221-09 OR 41B (M22520/5-41B) HEX: 4.52 L=10.16
- INNER CONTACT CRIMPING TOOL P/N 413 SP 00 ADJUST TO 5
- PACKAGING IN BAG WITH COMMERCIAL PART NUMBER AND DATE CODE
- CONNECTOR ACCORDING TO NFC 93-570, UTEC 93-570



SCREW TORQUE 0.8 TO 1.2 N-m
RELEASE TORQUE 0.8 N-m MIN.



PANEL THICKNESS:
1. 1.2mm(GROUNDED OR ISOLATED)
2. 3mm(ONLY GROUNDED, WITHOUT WASHERS
⑦ AND ⑧)

NO.	DESCRIPTION	MATERIAL	FINISH	Q'TY	DRAWING NO.
9	NUT	BRASS	NICKEL	1	
8	WASHER	BRASS	NICKEL	1	
7	ISOLATING WASHER	EPOXY GLASS -FR4 TYPE	NATURAL	2	
6	FERRULE	COPPER	NICKEL	1	
5	CONTACT PIN	BECU	GOLD	1	
4	BARREL	BRASS	NICKEL	1	
3	RING	PSU,20% G.F.	GREEN	1	
2	INSULATOR	TEFLON	NATURAL	1	
1	BODY	BRASS	GOLD	1	

DIMENSIONS ARE IN MILLIMETERS

PART NO.	156 931 07
APPROVED	DATE 10-11-01'
CHECKED	DATE 10-11-01'
DRAWN	DATE 10-11-01'
FILE NO.	

Amphenol

TITLE	1.6/5.6 75Ω BULKHEAD MOUNT JACK (FOR L910/19 CABLE)
DRAWING NO.	
ITEM NO.	