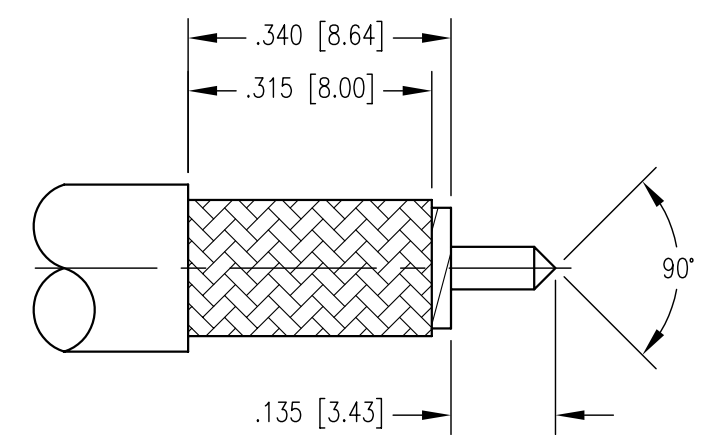
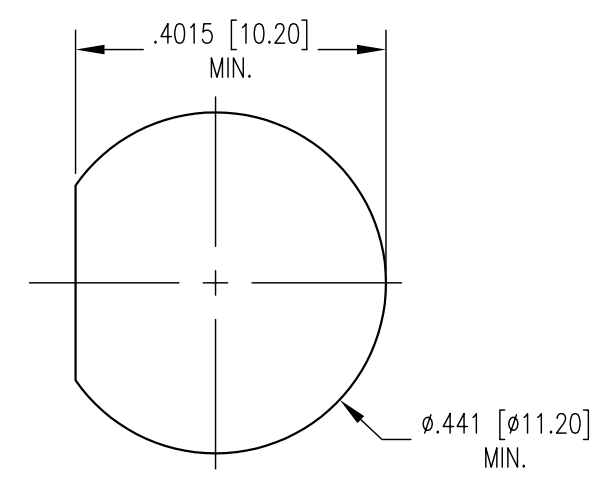
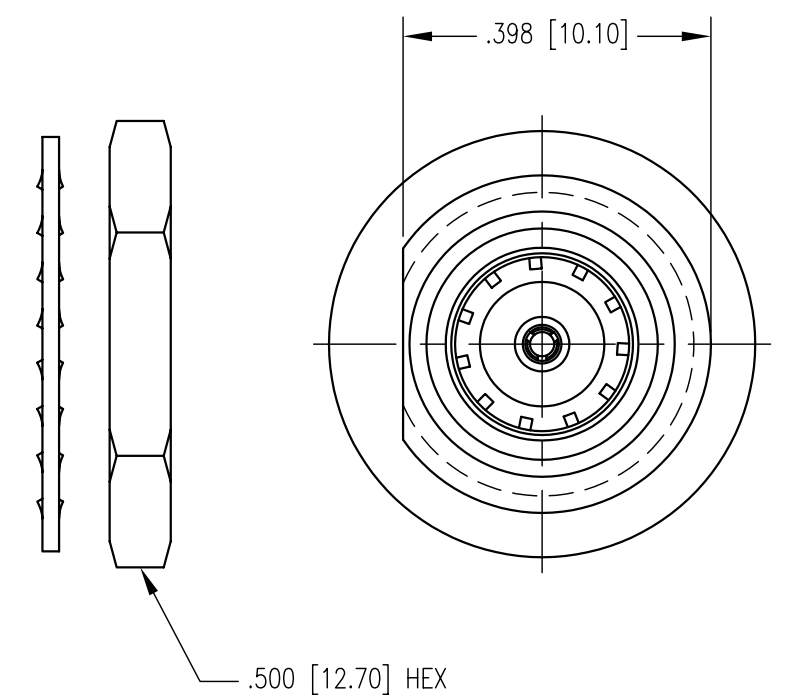
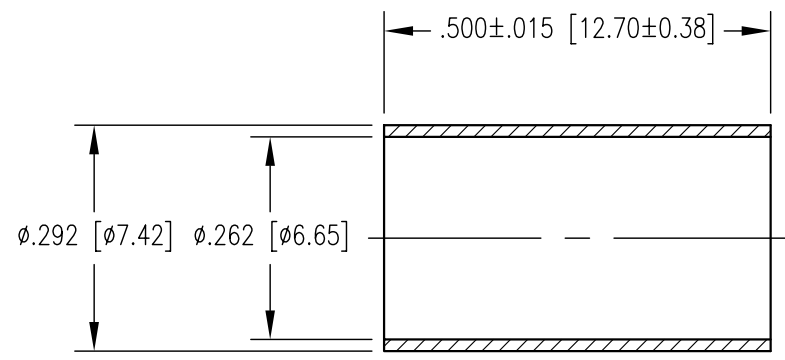
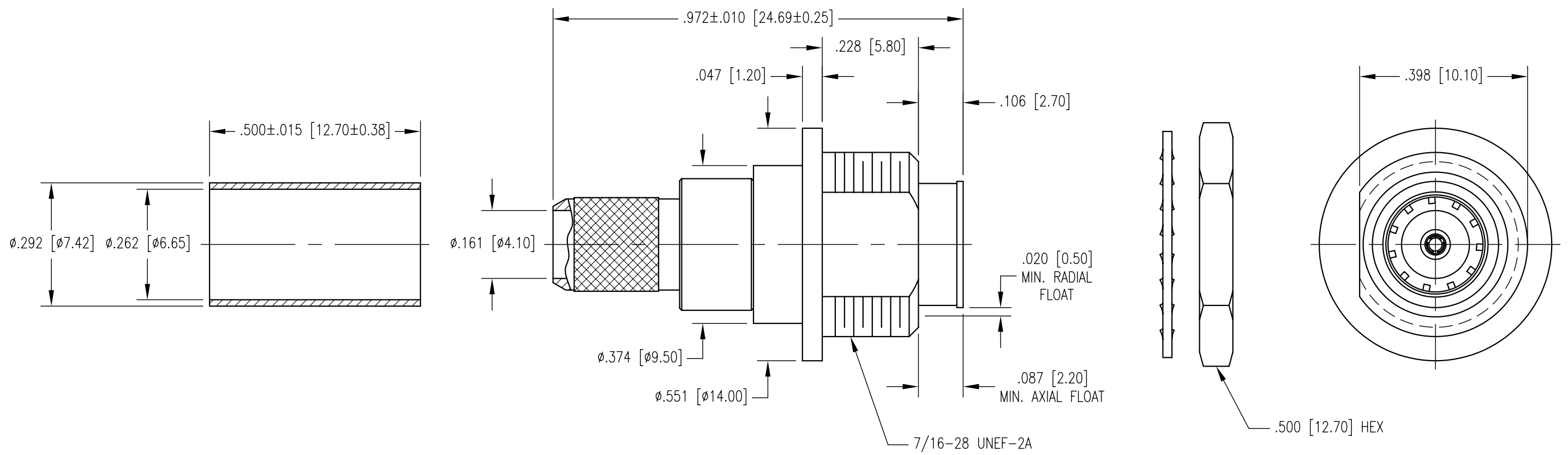


REV	DESCRIPTION	BY	APPD
01	EWR 03-283	JEM	MG



- NOTES:
- MATERIALS:  
 CENTER, OUTER CONTACTS & FERRULE: COPPER ALLOY  
 BODY AND NUT: BRASS PER ASTM B16  
 LOCKWASHER: PHOSPHOR BRONZE PER ASTM B103  
 INSULATOR: TEFLON PER ASTM D1710
  - FINISH:  
 SHROUD, CENTER & OUTER CONTACTS: .000030 MIN. GOLD PER ASTM B488 OVER  
 .000050 MIN. NICKEL PER AMS-QQ-N-290  
 ALL OTHER METAL PARTS: TRI-METAL PLATE
  - FOR USE WITH TIMES LMR-240, SUHNER S04272B CABLES OR EQUIVALENT.
  - FOR CABLING PROCEDURES USE CAP 9-24 WITH TRIMMING DIMENSIONS SHOWN.
  - CRIMP FERRULE USING .255 HEX DIE.
  - DESIGNED FOR USE WITH .125 [3.20] MAXIMUM PANEL THICKNESS.

PER ASME Y14.5M-1994 UNLESS OTHERWISE SPECIFIED: DIMENSIONS ARE IN INCHES TOLERANCES: DECIMALS .xx ± .01 [0.254] .xxx ± .005 [0.127] ANGLES ± 2'		NORTHROP GRUMMAN Winchester Electronics 62 Barnes Industrial Road North Wallingford, CT 06492	
CUSTOMER DRAWING		TITLE BMA FLOAT MOUNT BULKHEAD RECEPTACLE	
DRAWN JED	DATE 11/6/03	CHECKED CWB	DATE 11/10/03
APPROVED JEM	DATE 11/10/03	APPROVED MG	DATE 11/10/03
B		SD361-963-2400R	SHT. 1 OF 1 REV. 01