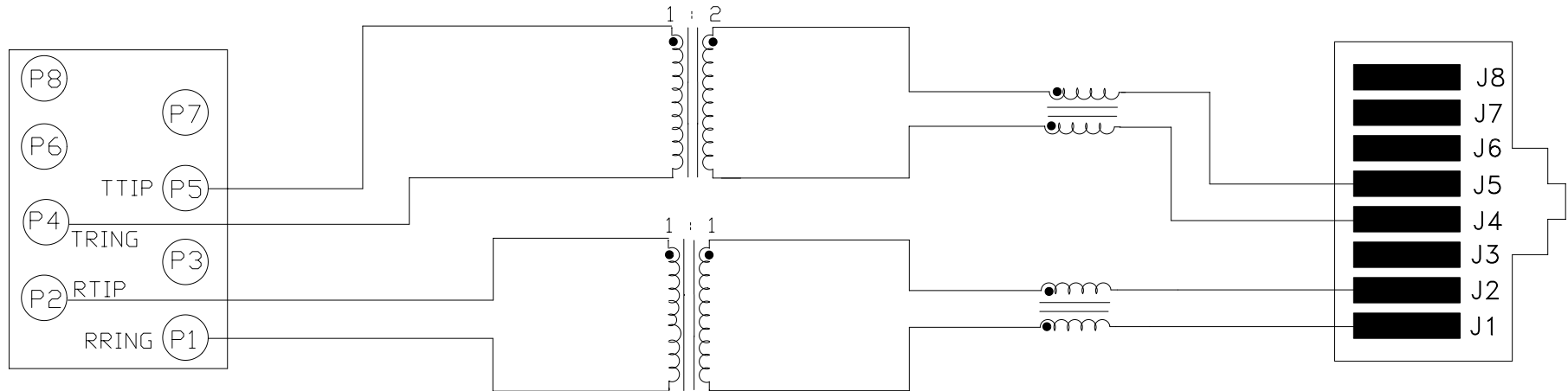


TOP VIEW



ELECTRICAL SPECIFICATIONS:

- 1.0 TURNS RATIO: (P2-P1) : (J2-J1) : 1 : 1 ± 3%
(P5-P4) : (J5-J4) : 1 : 2 ± 3%
- 2.0 INDUCTANCE: (P2-P1) ; (P5-P4) : 1.2mH MIN. @ 0.1V, 100KHz
- 3.0 LEAKAGE INDUCTANCE: P2-P1 (WITH J2 AND J1 SHORT) : 0.5uH MAX. @ 1MHz
P5-P4 (WITH J5 AND J4 SHORT) : 0.5uH MAX. @ 1MHz
- 4.0 INTERWINDING CAPACITANCE: (P2,P1) TO (J2,J1) : 35pf MAX @ 1MHz
(P5,P4) TO (J5,J4) : 35pf MAX. @ 1MHz
- 6.0 COMMON MODE ATTENUATION: : -20dB TYP @ 5MHz TO 100MHz
- 7.0 HIPOT: (P5-P4) TO (J5-J4) : 1500VAC
(P2-P1) TO (J2-J1) : 1500VAC
- 8.0 RETURN LOSS: (J1-J2 & J4-J5) 100 OHM REF.
51KHz TO 102KHz : 12dB MIN
102KHz TO 2.048MHz : 18dB MIN
2.048MHz TO 3.072MHz : 14dB MIN

NOTES

1.0 PINS WITHOUT ELECTRICAL CONNECTION ARE OMITTED.

NOTE ; 25 OHMS CONNECTED TO PINS P1-P2 & P5-P4.

- 9.0 DC RESISTANCE: (P5-P4) ; (P2-P1) : .8 ohms Max.



InNet Technologies, Inc.
<http://www.innet-tech.com>

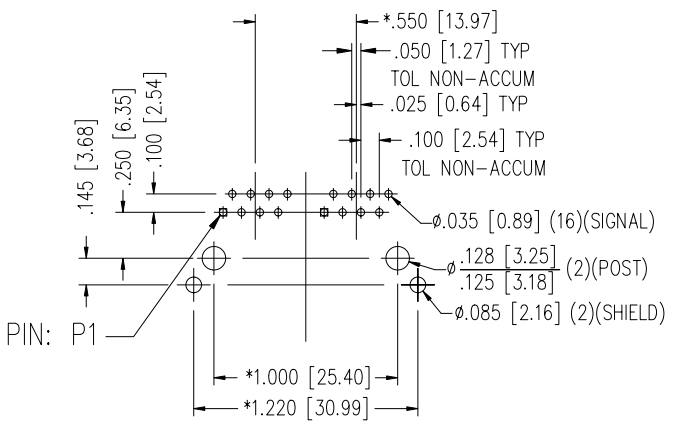
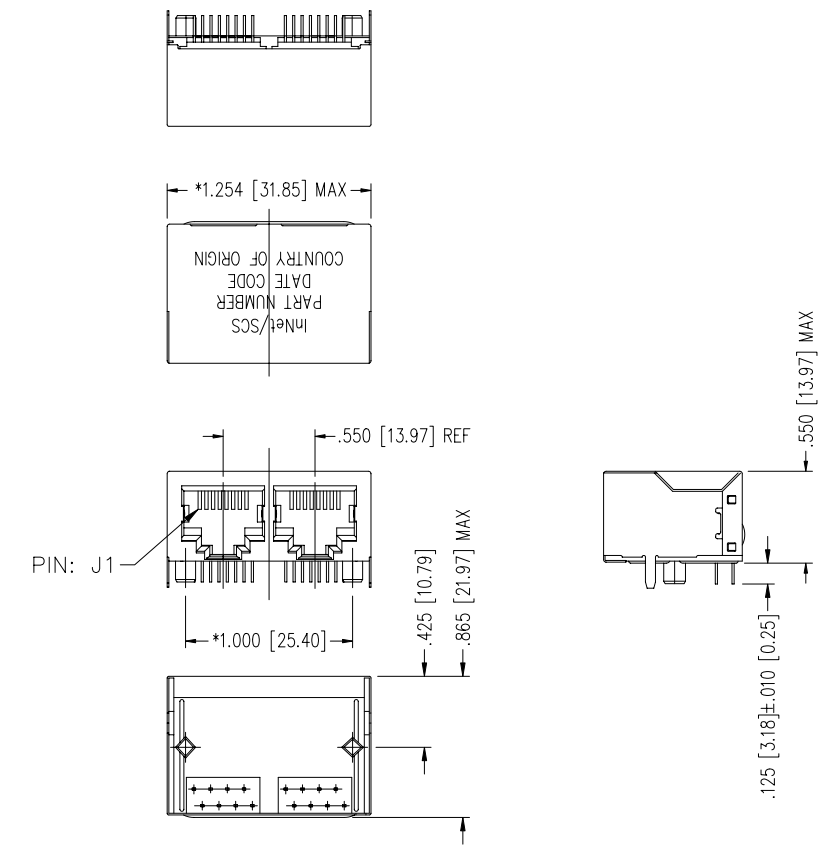


Stewart Connector Systems
<http://www.stewartconnector.com>

SHEET
1 OF 2

DRAWING NO.

SI-10224 REV. X



- NOTES:
- TOLERANCE COMPLY WITH F.C.C. DIMENSION REQUIREMENTS ALL OTHERS $\pm .005 [0.13]$ UNLESS OTHERWISE SPECIFIED.
 - DIMENSIONS SHOWN WITH "*" TO BE CENTRAL ABOUT CENTER LINE
 - PINS NOT ELEECTRICALLY CONNECTED MAY BE OMITTED. SEE ELECTRICAL DRAWING FOR OMITTED PINS.
 - 50 MICRO-INCH SELECTIVE GOLD PLATING
 - WAVE SOLDER COMPATABLE - PREHEAT $125^{\circ}\text{C}/90$ SECS MAX.
 - ALL POLYMERS FLAMMABILITY - UL94V0

		InNet Technologies, Inc. http://www.innet-tech.com	
		Stewart Connector Systems http://www.stewartconnector.com	
SHEET	2 OF 2	DRAWING NO.	SI-10224
			REV. 03