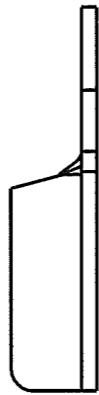
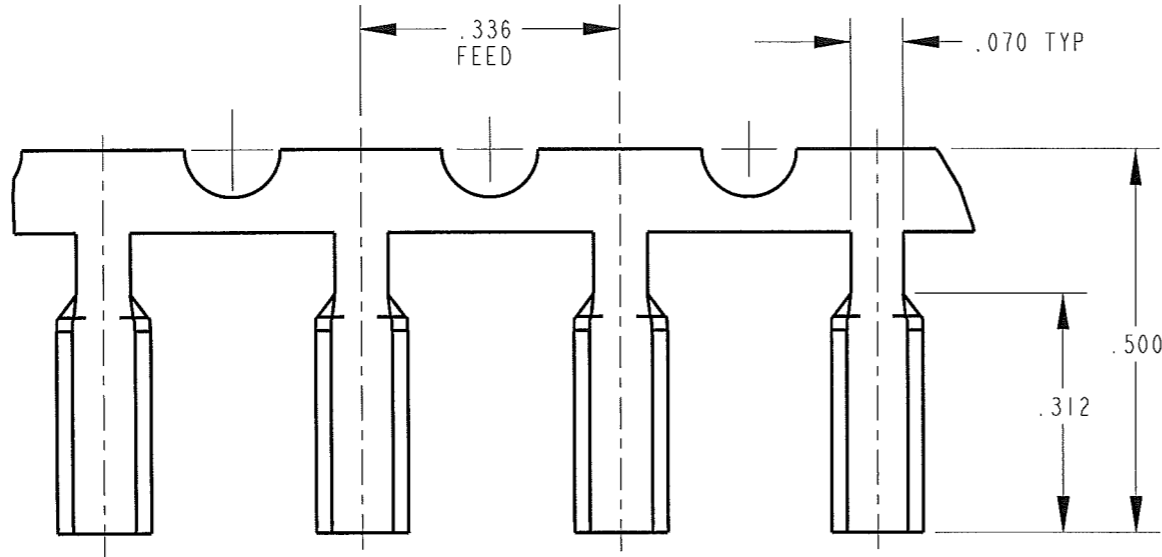
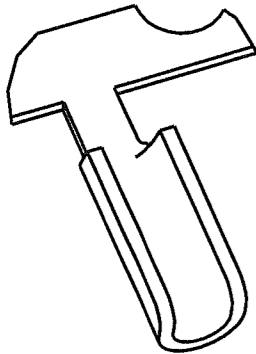


CUSTOMER DRAWING

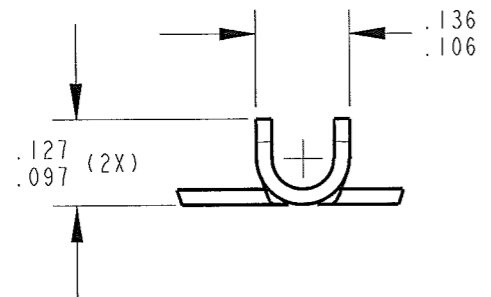
P/N: 3800S 1751-2

REV
J

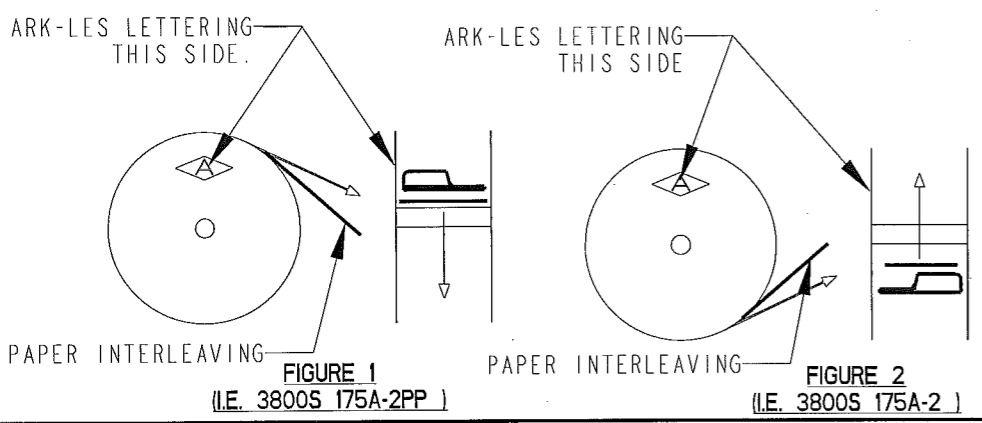
PART NUMBER	MATERIAL	FINISH
3800S 175A-2	.020 THICK BRASS C26000, 1/2 HARD	PRETINNED
3800S 175AB-2	.020 THICK BRASS C26000, 1/2 HARD	NONE
3800S 175AD-2	.020 THICK BRASS C26000, 1/2 HARD	POST-TIN



- NOTES:
1. CMA RANGE: 710-2,725
 2. FOR PIGTAIL SPLICES USED IN A BENCH APPLICATOR, ADD SUFFIX "PP" TO PART NUMBER (i.e. 3800S 175A-2PP), SEE FIGURE 1 FOR REELING.
 3. FOR THROUGH SPLICES USED IN A BENCH APPLICATOR, THE PART NUMBER REMAINS THE SAME AS IN THE TABLE (i.e. 3800S 175A-2). SEE FIGURE 2 FOR REELING.
 4. FOR PIGTAIL AND THROUGH SPLICES USED IN A SLIM-LINE AIR PRESS, THE PART NUMBER REMAINS THE SAME AS IN THE TABLE (i.e. 3800S 175A-2). SEE FIGURE 2 FOR REELING.
 5. PAPER INTERLEAVING ADDED TO REDUCE TANGLING IN REELS.



ARK-LES
UNCONTROLLED



PRINT DIST.	PROD. REL.	6/8/1978	CHK'D	TOLERANCES UNLESS OTHERWISE SPECIFIED	ArkLes CORPORATION STOUGHTON, MA
DEPT #	QUOTE REL.		DO NOT SCALE	DECIMALS ± .010	
ENG X	DRAWN BY D.O'NEILL 11/03/06		APP.	METRIC ± 0.25mm	ORIGINAL IF RED
SALES	SUPERSEDES DWG. DATED: 1/20/1995		ET 11.17.06	ANGLES ± 1°	PART NAME CUSTOMER DRAWING SPLICE TERMINAL
STO X	SCALE 6:1		DO NOT SCALE PRINT		CAD#: 3800S_175-2-REVJ_CUST
RAL	MATERIAL: SEE TABLE				P/N: 3800S 1751-2
JZ	FINISH: SEE TABLE				REV J
CHINA					
REV.	DESCRIPTION	DATE	DR.		