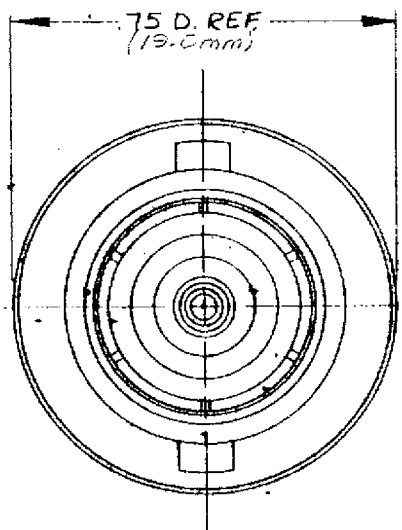
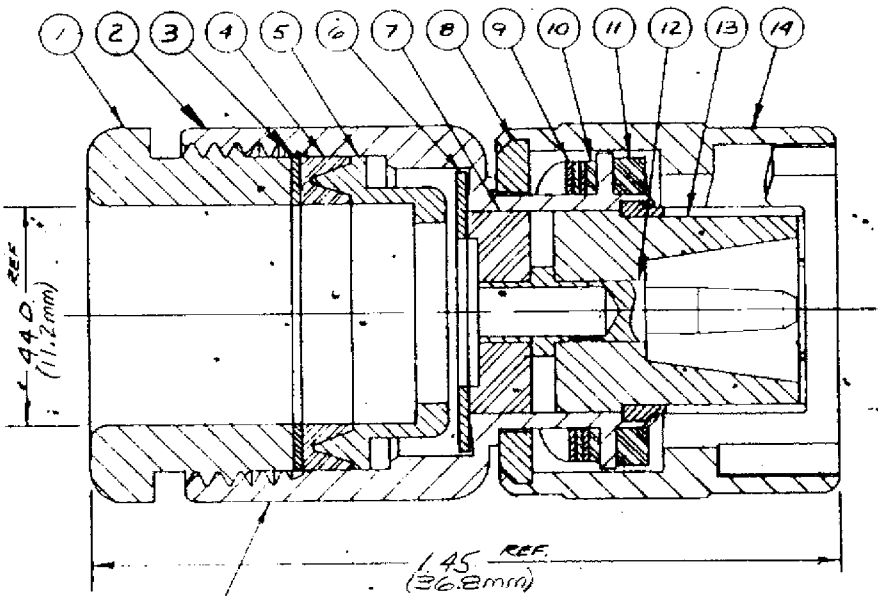


DASH NO	M CODE	MADE FROM
---------	--------	-----------



STAMP: 91836 M39012/06-0015
795-9-5 XXXX

DATE CODE

- NOTES:
- FOR USE WITH M17/75-R6 214 CABLE GROUP.
 - FOR CABLING INSTRUCTIONS SEE CP-1016.

UNLESS OTHERWISE SPECIFIED	2 REMOVE ALL BURRS. BREAK SHARP EDGES .005 MAX
1 TOLERANCES FRACTIONS & 2 PLACE DECIMALS ± 0.10	3 NO FILLETS PERMITTED
1 PLACE DECIMALS ± 0.04	4 SURFACE ROUGHNESS 63 MICRONS RMS MAX
1 R CONCENTRICITY OF ANY 2 DIAMETERS MAY NOT EXCEED HALF THE SUM OF THEIR TOLERANCES	5 ALL DIMENSIONS PRIOR TO PLATING
	6 ALL PLATING IN ACCORDANCE WITH KER 10004

REVISIONS

ISSUE	CHANGES
0	CP 29311 RESTRICTED USAGE AMD 9 OCT 87
1	CN 29549 E RESTRICTION REMOVED AMD 8 JAN 88
2	CN 29549 E AMD 7 JAN 88

M39012/06-0015
(SHEET 1 OF 2)
S-D

S-D

SCALE	4:1
APPROX. SURFACE AREA	
	795-9-5
USED IN	
REF	
C PLUG	
DRAWN	AMD DATE 9 OCT 87
APPD	AMD DATE 10 OCT 87
APPD	DATE



S-D M39012/06-0015

(SHEET 1 OF 2)