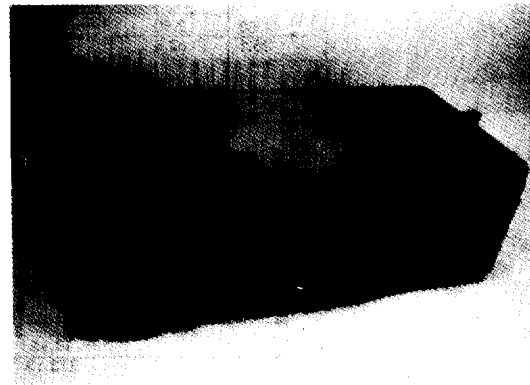


Features

- High Linearity
- High Gain
- Low/No Maintenance
- Long Life
- Fall Soft
- C Band

ACU-64100 RM

Description

Hewlett-Packard's C Band satellite uplink power amplifiers are designed to provide exceptionally high linearity. They may be used to retrofit SCPC, QPSK or other multiple carrier satellite uplinks now using TWTs with stringent third order requirements that normally preclude the use of a solid state amplifier.

The ACU-64100 is a 10 watt, 6 GHz amplifier with integral heatsink that may be conveniently mounted for use in a wide range of systems applications. The ACU-64100 RM (10 watt) and AWP-64200 (20 watt) amplifiers are installed in standard 19 inch rack-mountable cabinets with cooling fans that eliminate the need for an external thermal conduction path. Both versions are designed for retrofitting TWTs in existing applications, however they may also be used by equipment manufacturers whenever a high reliability, low maintenance unit is required.

ACU/AWP—High Power Satellite Communications Uplink
Guaranteed Specifications @ 25°C Case Temperature

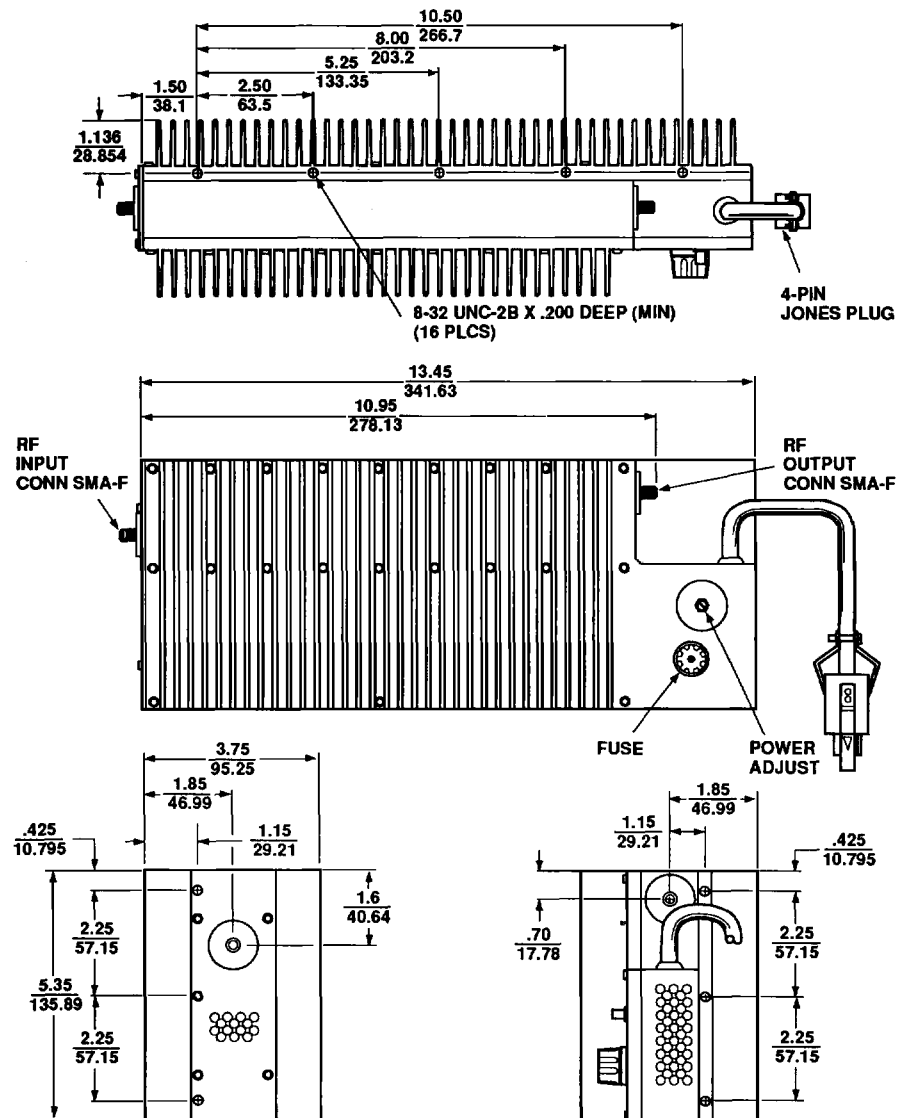
Model	Frequency Range (GHz)	Gain (dB)	Output Power ¹ (watts/dBm)	Noise Figure ² (dB) Max.	AM/PM Conver @ Max. Output Typ./Max.	Output Gain Variation 0° to +50° C Max.	Output Power Flatness (dB) P-P	Third Order Intercept Point (3 Tone)	Harmonics (dBc) Max.	Spurious (dBc) Max.	Return Loss Min. Input	Loss Output	DC Input Power ³ (watts) Typ.
ACU-64100	5.925-6.425	45-55 ⁵	10/+40	10	1.5/2	±3	±.25 ⁶	48	-53	-60	18	18	110 ⁷
ACU-64100RM*	5.925-6.425	43-53 ⁵	10/+40	10	1.5/2	±1	±.25 ⁶	48	-50	-60	18	14	125
AWP-64101RM*	5.925-6.425	43-53 ⁵	10/+40	10	1.5/2	±1	±.25 ⁶	48	-50	-60	18	14	125
AWP-64200RM*	5.925-6.425	45-55 ⁵	20/+43 ⁶	10	1.5/2	±1	±.25 ⁶	50	-53	-60	18	14	240

Notes:

1. @ 1 dB gain compression
2. @ maximum gain
3. -24 or -48 VDC; 115 or 230 VAC
4. Rack-mountable, 19-inch cabinet
5. 10 dB adjustable input attenuator
6. Peak-to-peak across any 40 MHz band at rated output power
7. +15 V option available
8. saturated power output

Case Drawing
ACU-64100

C Band Uplink Power Amplifier

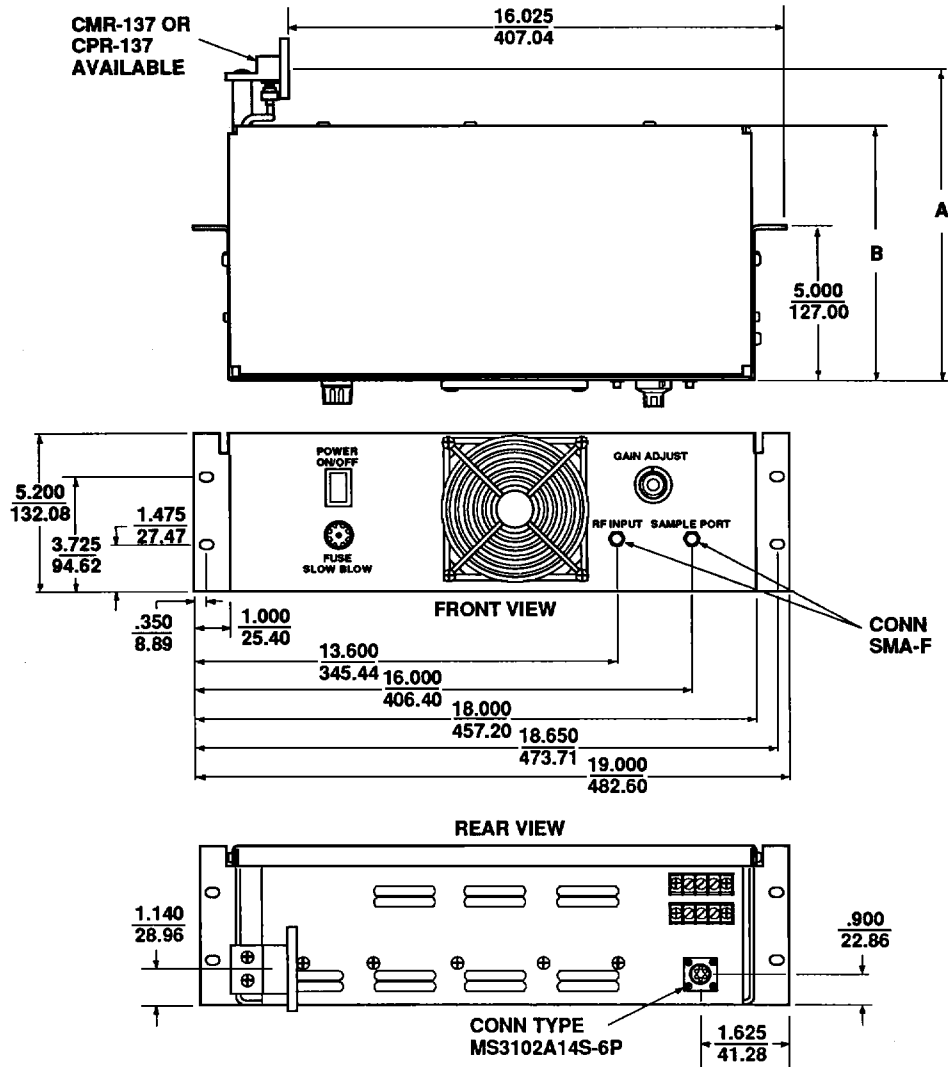


NOTES (UNLESS OTHERWISE SPECIFIED):

1. DIMENSIONS ARE SPECIFIED IN $\frac{\text{INCHES}}{\text{MM}}$
2. TOLERANCES: .XX ± 0.02
 .5 $\pm .5$
 .XXX ± 0.010
 .25 $\pm .25$

Case Drawing
ACU-64100RM, AWP-64200RM

C Band Uplink Power Amplifier



CASE	DIMENSION				FUSE
	A		B		
	IN	MM	IN	MM	
ACU-64100RM	9.815	249.30	8.212	208.58	3A @ -48 VDC 7A @ -24 VDC
AWP-64200RM	17.430	442.72	15.475	393.06	7A @ -48 VDC 12A @ -24 VDC

- NOTES (UNLESS OTHERWISE SPECIFIED):
- DIMENSIONS ARE SPECIFIED IN INCHES
MM
 - TOLERANCES: .XX ± 0.02
 $\pm .5$
.XXX ± 0.010
 $\pm .25$