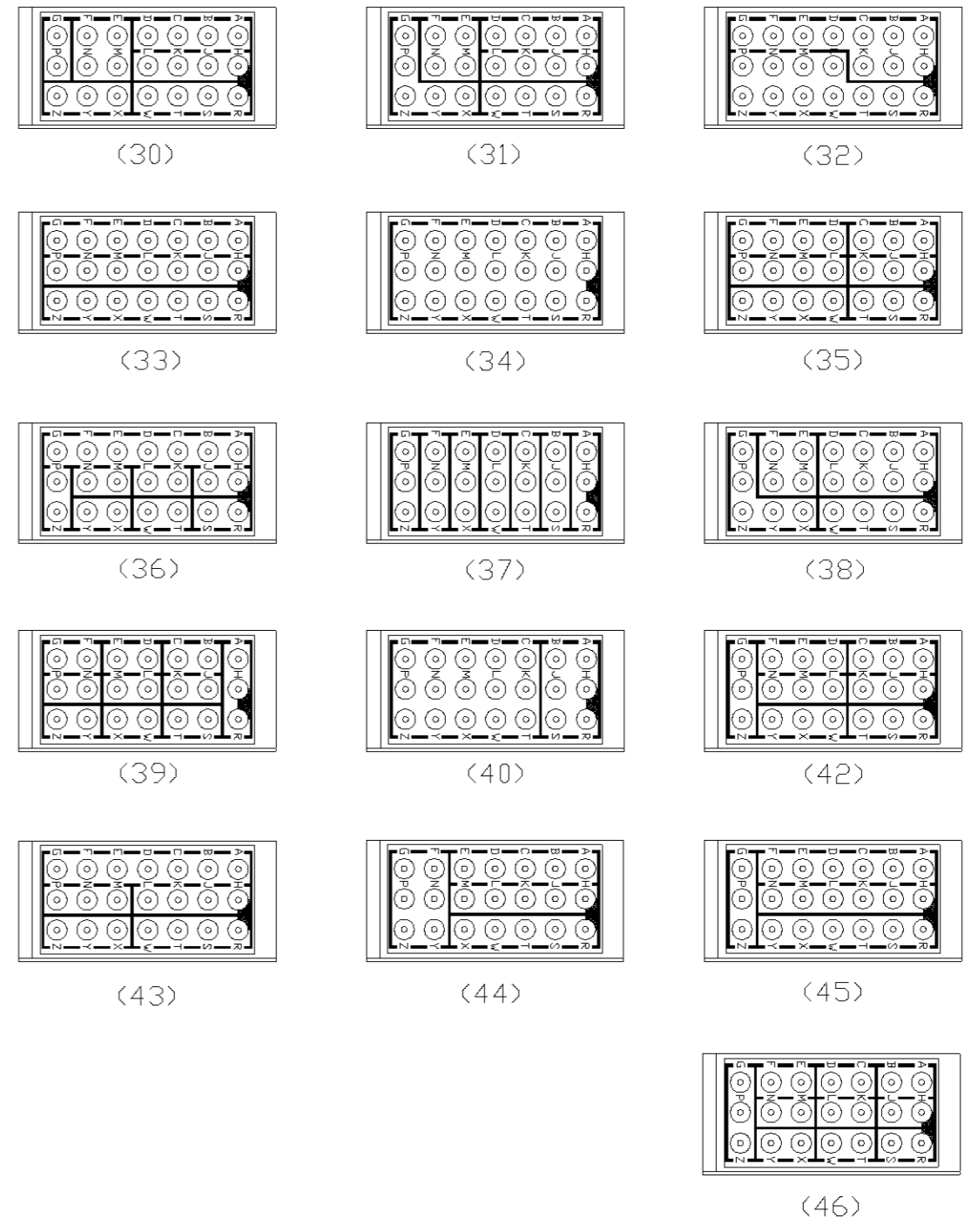
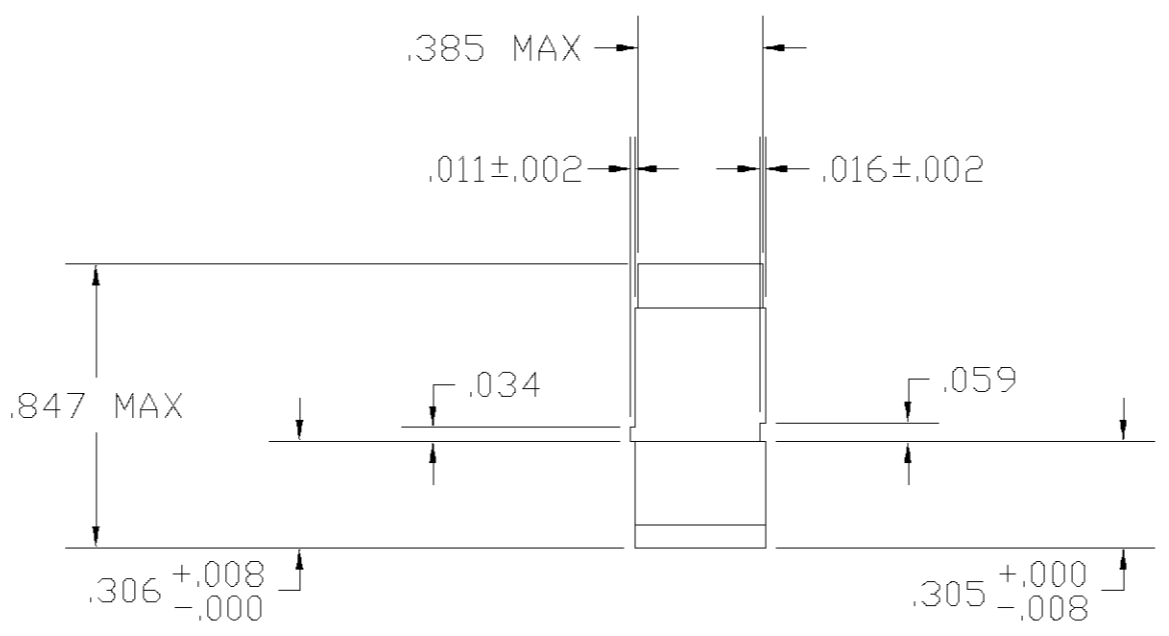
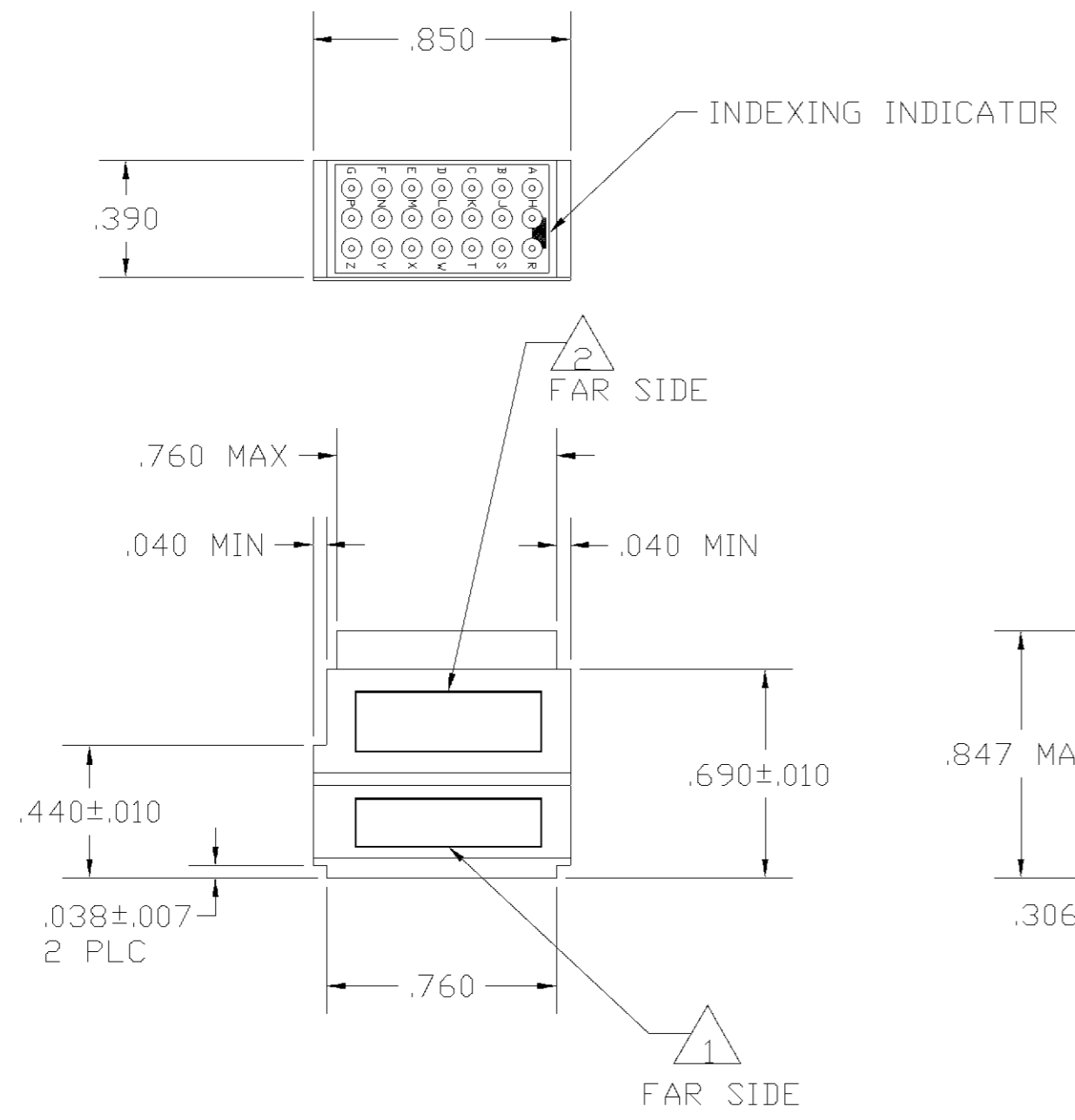


THIS DRAWING IS UNPUBLISHED. RELEASED FOR PUBLICATION		
COPYRIGHT BY TYCO ELECTRONICS CORPORATION. ALL RIGHTS RESERVED.		
DESCRIPTION	MATERIAL	FINISH
MODULE ASSEMBLY	D.A.P. PER MIL-M14 TYPE SDG-F	COLOR: GREEN
GROMMET	FLUORSILICONE RUBBER MPS #10149	COLOR: GREEN
CONTACT SOCKET	BERYLLIUM COPPER PER ASTM B194	GOLD PLATE PER MIL-G-45204
RETAINING CLIP	BERYLLIUM COPPER PER ASTM B194 OR STAINLESS STEEL PER QQ-S-766	NONE
CONTACTS	COPPER ALLOY PER MIL-C-39029/1	GOLD PLATE PER MIL-G-45204
SEALING PLUGS	F.E.P. PER MIL-P-19468	COLOR: BLACK

LDC		DIST		REVISIONS			
DF	AO	P	LTR	DESCRIPTION	DATE	DWN	APVD
		A		REV PER 0G3D-0159-01	1-02	CT	DM



BUSSING ARRANGEMENTS  $\Delta$

- $\Delta$  4 CONTACTS AND SEALING PLUGS ARE PACKAGED SEPARATELY WHEN REQUIRED.
- $\Delta$  3 BUSSING ARRANGEMENT OUTLINE DENOTES INTERNAL ARRANGEMENT OF CONTACT SOCKETS.
- $\Delta$  2 MARK MODULE ASSEMBLY WITH CUSTOMER PART NO., MILITARY PART NO. IF REQUIRED .060 MINIMUM HIGH CHARACTERS AT APPROXIMATE AREA SHOWN.
- $\Delta$  1 MARK MODULE ASSEMBLY WITH "AMP", AMP PART NO. AND DATE CODE .060 MINIMUM HIGH CHARACTERS AT APPROXIMATE AREA SHOWN.

THIS DRAWING IS A CONTROLLED DOCUMENT.		DWN J. MECK 31JAN2002	<b>tyco</b> AMP Incorporated	
DIMENSIONS: INCHES		CHK R. RYAN 12-14-94	<b>Electronics</b> Harrisburg, PA 17105-3608	
TOLERANCES UNLESS OTHERWISE SPECIFIED:		APVD R. RYAN 12-14-94	NAME	
0 PLC ± -		PRODUCT SPEC		
1 PLC ± -		APPLICATION SPEC		
2 PLC ± -		-		
3 PLC ± .005		-		
4 PLC ± -		-		
ANGLES ± -		-		
MATERIAL		WEIGHT	SIZE	RESTRICTED TO
FINISH		-	A2 00779	-
-		CAGE CODE		DRAWING NO
-		592630		C=592630
CUSTOMER DRAWING		SCALE	SHEET	REV
-		2:1	1 OF 2	A

THIS DRAWING IS UNPUBLISHED. RELEASED FOR PUBLICATION  
 © COPYRIGHT BY TYCO ELECTRONICS CORPORATION. ALL RIGHTS RESERVED.


LOC	DIST	REVISIONS					
DF	A0	P	LTR	DESCRIPTION	DATE	DWN	APVD
		-		SEE SHEET #1	-	-	-

MARKING	46	45	44	43	42	40	39	38	37	36	35	34	33	32	31	30	SEALING PLUG QTY 2	CONTACTS QTY 22	PART NO.
SUPERSEDED BY 4-592629-3						X											X	X	4-592630-4
																	X	X	4-592630-3
																	OBSOLETE	X	4-592630-1
										X									3-592630-9
																	X		3-592630-8
																			3-592630-7
										X									3-592630-6
											X								3-592630-5
									X										3-592630-4
																			3-592630-3
																			3-592630-2
																			3-592630-1
																			3-592630-0
		X															X	X	2-592630-9
		X																	2-592630-8
SUPERSEDED BY 4-592629-5			X														X	X	2-592630-7
			X																2-592630-6
SUPERSEDED BY 1-592629-9				X													X	X	2-592630-5
				X															2-592630-4
SUPERSEDED BY 4-592629-2					X												X	X	2-592630-3
					X														2-592630-2
SUPERSEDED BY 1-592629-7						X											X	X	2-592630-1
						X													2-592630-0
SUPERSEDED BY 1-592629-5							X										X	X	1-592630-9
							X												1-592630-8
SUPERSEDED BY 1-592629-3								X									X	X	1-592630-7
								X											1-592630-6
SUPERSEDED BY 1-592629-1									X								X	X	1-592630-5
									X										1-592630-4
SUPERSEDED BY 4-592629-4										X							X	X	1-592630-3
										X									1-592630-2
SUPERSEDED BY 592629-9											X						X	X	1-592630-1
											X								1-592630-0
SUPERSEDED BY 592629-7												X					X	X	592630-9
												X							592630-8
SUPERSEDED BY 592629-5													X				X	X	592630-7
													X						592630-6
SUPERSEDED BY 592629-3														X			X	X	592630-5
														X					592630-4
SUPERSEDED BY 592629-1															X		X	X	592630-3
															X				592630-2
SUPERSEDED BY 4-592629-7																X	X	X	592630-1

MARKING  


BUSSING ARRANGEMENTS

SEALING PLUG QTY 2   
 CONTACTS QTY 22  PART NO.

THIS DRAWING IS A CONTROLLED DOCUMENT.		DWN J. MECK 31JAN2002		AMP Incorporated Harrisburg, PA 17105-3608	
DIMENSIONS: INCHES		CHK R. RYAN 12-14-94		NAME	
TOLERANCES UNLESS OTHERWISE SPECIFIED: 0 PLC ± - 1 PLC ± - 2 PLC ± - 3 PLC ± .005 4 PLC ± - ANGLES ± -		APVD R. RYAN 12-14-94	PRODUCT SPEC		
MATERIAL		FINISH	APPLICATION SPEC		
		WEIGHT	SIZE A2		CAGE CODE 00779
			DRAWING NO C=592630		RESTRICTED TO
			CUSTOMER DRAWING		SCALE 2:1
			SHEET 2 OF 2		REV A