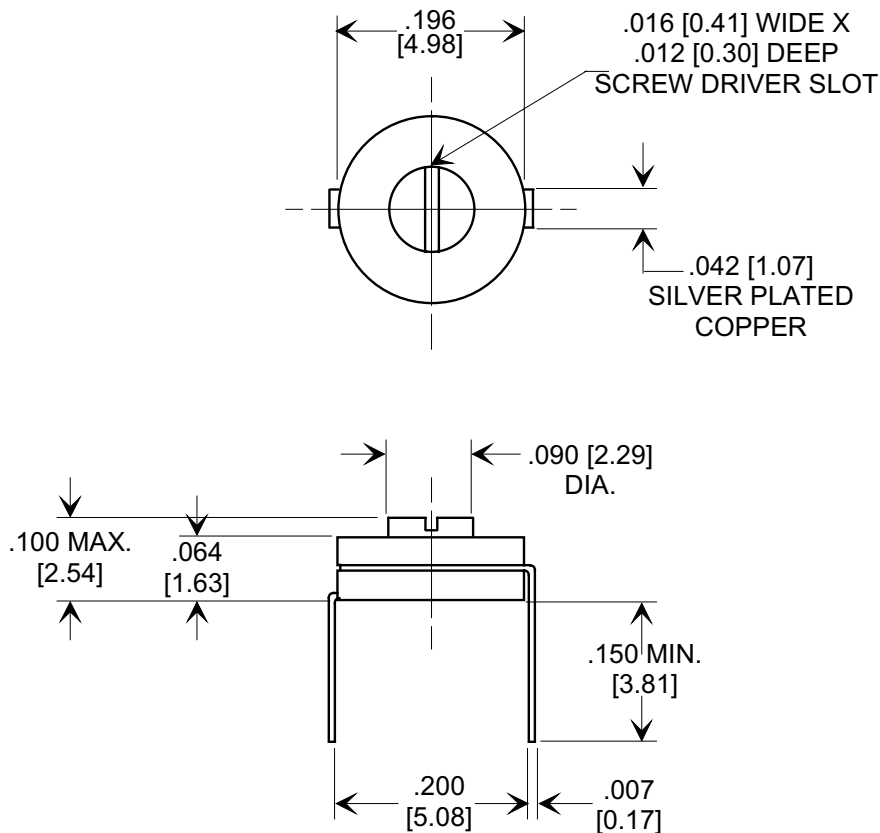
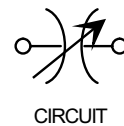
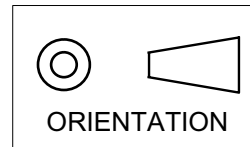


MARKETING SALES DRAWING
DIMENSIONS IN INCHES - DO NOT SCALE THIS DRAWING
DIMENSIONS IN METRIC - []

Electrical Testing
per Tusonix standard
test plans and Mil-Std-202
Test Methods.



SPECIFICATIONS

Value:	1.0 - 2.5 pF
Value Tol.:	MUST MEET MIN. / MAX. CAP
Rating:	100 VDC
Diel. Code:	A (NP0)
Operating Range:	-55°C TO + 85°C
To Tusonix Spec Unless Stated Otherwise	

NOTES:

1. NO MARKING REQUIRED
2. DIMENSION TOLERANCES
 $\leq .125" [3.18] = \pm .005 [0.13]$
 $\geq .126" [3.20] = \pm .015 [0.38].$

X-2015 Rev-0 REVISION RECORD Original Release C.O. 20010926-1-07 0	TOLERANCES unless otherwise specified 2 PLC. DECIMAL ± $\frac{\quad}{\quad}$ 3 PLC. DECIMAL ± $\frac{\quad}{\quad}$		Title LOW PROFILE CERAMIC TRIMMER		
	ANGLES ± $\frac{\quad}{\quad}$		Drawn L.E. 09-26-01	Scale 5 X	
	TUSONIX TUCSON, ARIZONA		Approved T.C. 09-26-01		
			A	513-021 A1.0-2.5	