

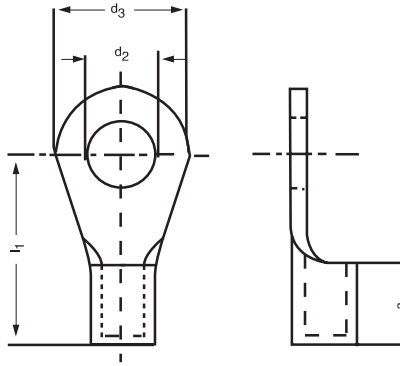
Cable Lugs

ring type, brazed
DIN 46234 and similar types
Type test according to VG 96933-13

Kabelschuhe

Ringform, gelötet
DIN 46234 und ähnliche Ausführungen
Typprüfung nach VG 96933-13

Type 1



Type	Wire cross section qmm	DIN standard	Nominal size	a1	d2	d3	l1	Material thickness	Form E=Single B=chain	Part number	Material	Surface	Foot-note
1	0.5-1	46234	3-1	5.00	3.20	6.00	11.00	0.80	E	03401.311.011	SE-Cu	Sn	*1
1	0.5-1	46234	4-1	5.00	4.30	8.00	12.00	0.80	E	03403.311.011	SE-Cu	Sn	*1
1	0.5-1	46234	5-1	5.00	5.30	10.00	13.00	0.80	E	03404.311.011	SE-Cu	Sn	*1
1	1.5-2.5	46234	3-2.5	5.00	3.20	6.00	11.00	0.80	E	03405.311.011	SE-Cu	Sn	*1
1	1.5-2.5	46234	4-2.5	5.00	4.30	8.00	12.00	0.80	E	03406.311.011	SE-Cu	Sn	*1
1	1.5-2.5	46234	5-2.5	5.00	5.30	10.00	14.00	0.80	E	03407.311.011	SE-Cu	Sn	*1
1	1.5-2.5	46234	6-2.5	5.00	6.50	11.00	16.00	0.80	E	03408.311.011	SE-Cu	Sn	*1
1	1.5-2.5	46234	8-2.5	5.00	8.40	14.00	17.00	0.80	E	03409.311.011	SE-Cu	Sn	*1
1	4-6	46234	4-6	6.00	4.30	8.00	14.00	1.00	E	03410.311.011	SE-Cu	Sn	*1
1	4-6	46234	5-6	6.00	5.30	10.00	15.00	1.00	E	03411.311.011	SE-Cu	Sn	*1
1	4-6	46234	6-6	6.00	6.50	11.00	16.00	1.00	E	03412.311.011	SE-Cu	Sn	*1
1	4-6	46234	8-6	6.00	8.40	14.00	19.00	1.00	E	03413.311.011	SE-Cu	Sn	*1
1	4-6	46234	10-6	6.00	10.50	18.00	21.00	1.00	E	03414.311.011	SE-Cu	Sn	*1
1	0.5-1		6-1	5.00	6.50	11.00	15.00	0.80	E	03472.311.011	SE-Cu	Sn	
1	0.5-1		8-1	5.00	8.40	14.00	17.00	0.80	E	03473.311.011	SE-Cu	Sn	
1	0.5-1		10-1	5.00	10.50	18.00	19.00	0.80	E	03474.311.011	SE-Cu	Sn	
1	1.5-2.5		10-2.5	5.00	10.50	18.00	19.00	0.80	E	03475.311.011	SE-Cu	Sn	
Typ	Nennquerschnitt qmm	DIN	Nenngröße	a1	d2	d3	l1	Mat.dicke	Form E=Einzel B=Band	Teile-Nr.	Werkstoff	Oberfläche	Fußnote

*1 Type test according to VG 96933-13

*1 Typprüfung nach VG 96933-13