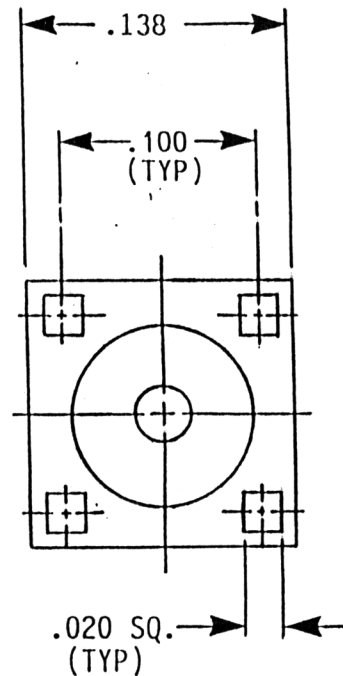
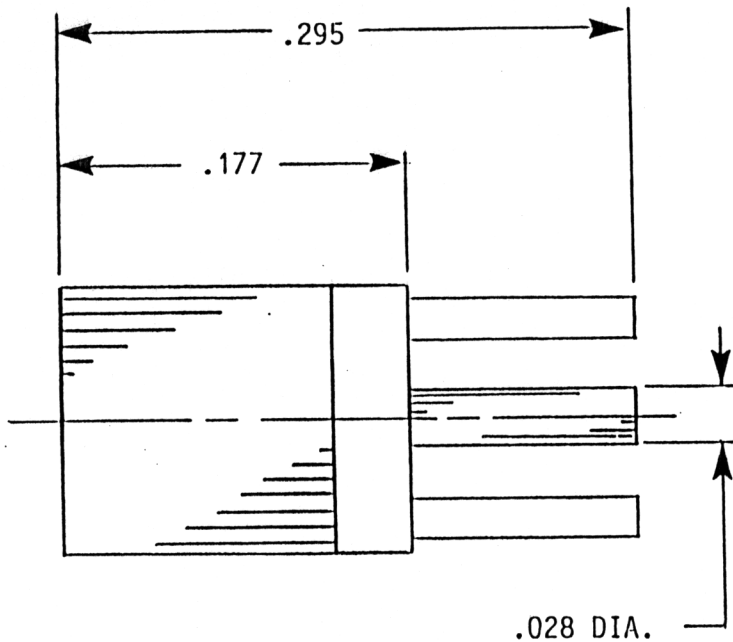
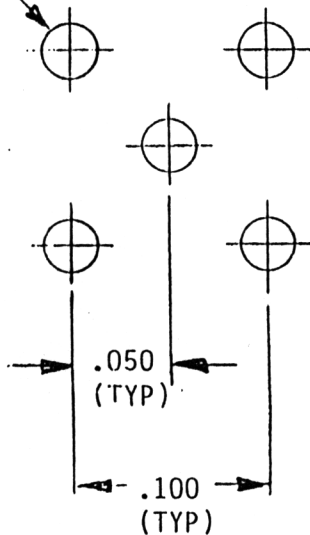


REVISIONS

LTR	DESCRIPTION	DATE	APPROVED
A	ECO # 9999	11-5-96	D.N.



.038 DIA. MIN.
5 PLACES.



PROPRIETARY INFORMATION
NOT TO BE RELEASED
WITHOUT WRITTEN PERMISSION
FROM AN AUTHORIZED
REPRESENTATIVE OF
APPLIED ENGINEERING PRODUCTS.

NOTES:

MATERIAL:

- CONTACT = BERYLLIUM COPPER PER ASTM B196, ALLOY C17300, TEMPER TD04.
- INSULATOR = TEFLON, VIRGIN WHITE, PER ASTM D1710, GRADE 1, TYPE I, CLASS "A".
- ALL OTHER METAL PARTS = BRASS PER ASTM B16, ALLOY C36000, TEMPER H02.

FINISHES:

- CONTACT = GOLD PLATE PER MIL-G-45204, TYPE II, CLASS 1, GRADE C OVER .00010 TO .00020 STRESS FREE SULFAMATE NICKEL PER QQ-N-290.
- ALL OTHER METAL PARTS = GOLD PLATE PER MIL-G-45204, TYPE II, CLASS 0, GRADE C OVER .00010 TO .00020 COPPER STRIKE PER MIL-C-14550.

UNLESS OTHERWISE SPECIFIED DIMENSIONS ARE IN INCHES TOLERANCES ON FRAC. DECIMAL ANGLES 1/64 ± 2°	DRAWN D.N.	DATE 11-5-96	APPLIED ENGINEERING PRODUCTS 104 John W. Murphy Drive, P.O. Box 510 New Haven, CT 06513	
	CHECKED <i>[Signature]</i>	DATE 11/6/96		
MATERIAL: SEE NOTES	APPROVED <i>f. Pettk</i>	DATE 11/6/96	MMCX STRAIGHT P.C. MOUNT JACK	
	FINISH: SEE NOTES			
	SIZE A	CODE IDENT NO. 19505	8909-1511-000	
	SCALE NONE	REV. A	SHEET 1	OF 1

Design Products Co. Clearprint #10006