

Customer Information Sheet

DRAWING No.: H05-700XX91

SHEET 2 OF 2 IF IN DOUBT - ASK

©

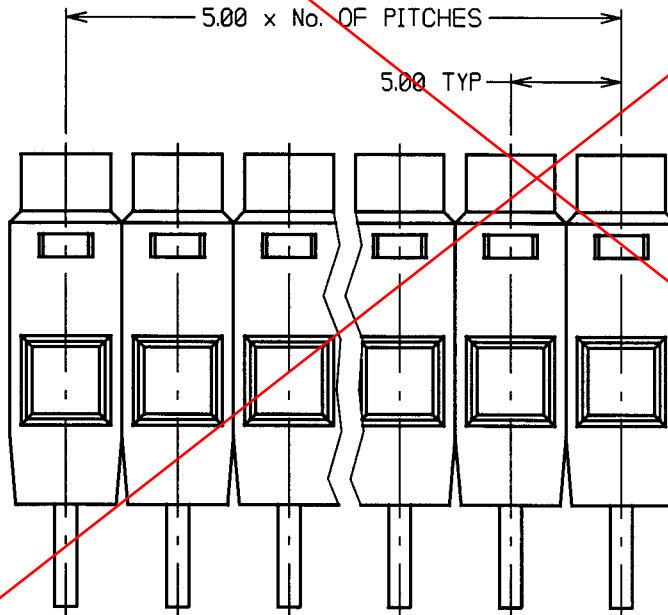
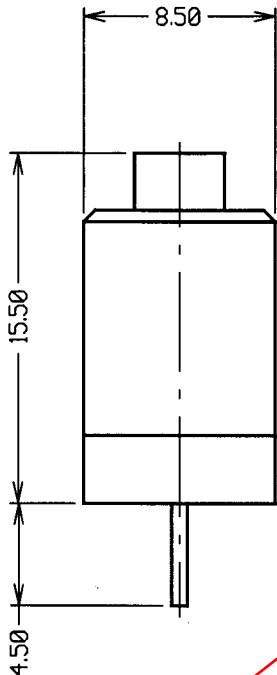
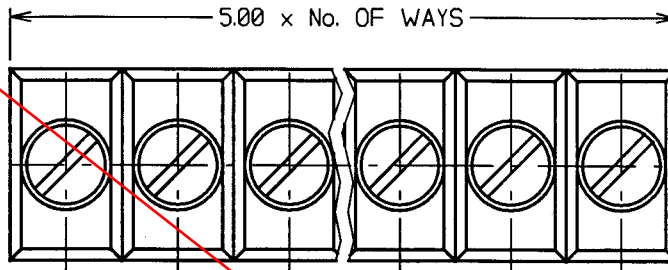
NOT TO SCALE

THIRD ANGLE PROJECTION

ALL DIMENSIONS IN mm

ORDER CODE:
H05-700XX91

No. OF WAYS
01 - 36



NOTES:

1. RECOMMENDED PCB HOLE = $\varnothing 1.30$ mm.
2. SUITABLE FOR WIRE UP TO 4mm² AREA - RECOMMENDED FOR 14 TO 18 AWG.
3. CAN BE CUT TO LENGTH REQUIRED.

SPECIFICATIONS:

MATERIALS:

MOULDING = FLAME RETARDANT POLYCARBONATE UL94V-0
 TERMINAL = BRASS
 RISING CLAMP = STEEL
 CAPTIVE SCREW = STEEL

FINISH:

TERMINALS = 5 μ TIN OVER NICKEL
 RISING CLAMP = ZINC
 CAPTIVE SCREW = 7 μ ZINC, COLOUR PASSIVATE

ELECTRICAL:

CURRENT RATING = 16A
 VOLTAGE RATING = 380V
 DIELECTRIC STRENGTH = 5KV MIN
 INSULATION RESISTANCE = 40 MEGOHM MIN

MECHANICAL:

TORQUE OF SCREW = 4Nm

ENVIRONMENTAL:

TEMPERATURE RANGE = -20°C TO +125°C
 SHORT TERM TEMPERATURE = 160°C

| | | |
|------------------------------|----------|------|
| 2 | 15.12.98 | 4683 |
| ISS. | DATE | C/N |
| APPROVED: <i>[Signature]</i> | | |
| CHECKED: <i>[Signature]</i> | | |
| DRAWN: W. J. BOURNE | | |
| CUSTOMER REF. | | |
| ASSEMBLY DRG: | | |

OBSOLETE

HARWIN

TOLERANCES

X - ± 1 mm
 X.X - ± 0.25 mm
 X.XX - ± 0.10 mm
 X.XXX - ± 0.01 mm
 ANGLES - $\pm 1^\circ$
 UNLESS STATED

MATERIAL:

SEE ABOVE

FINISH: SEE ABOVE

S/AREA: mm²

TITLE: 5mm PITCH VERTICAL
 RISING CLAMP TERMINAL
 BLOCK (MODULAR)

DRAWING NUMBER:

H05-700XX91

SHT
2
OF
2

HARWIN INC
 U.S.A.
 TEL: (812) 285 0055
 FAX: (812) 285 0056

HARWIN PLC
 UK.
 TEL: 01705 370451
 FAX: 01705 314590

HARWIN PTE
 SINGAPORE
 TEL: 65 7794909
 FAX: 65 7793868