

# EDD

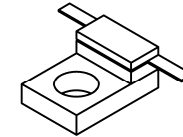
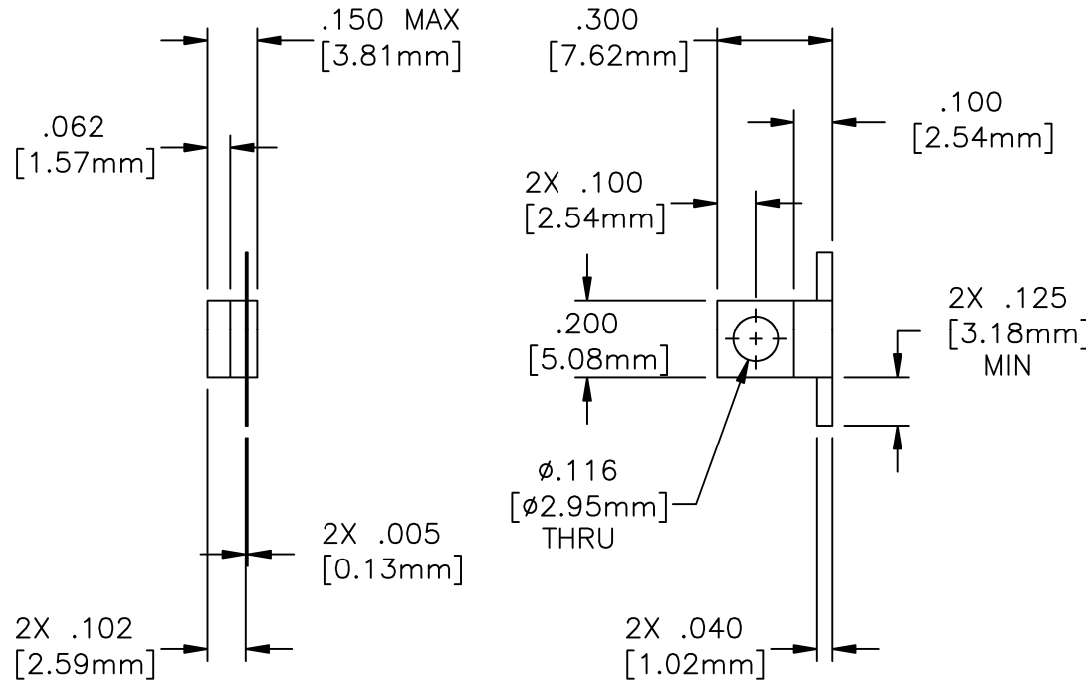
NOTES:  
UNLESS OTHERWISE SPECIFIED, TOLERANCES ARE  $\pm .010$ " [.254mm].

DRAWING NO.:

**33-1005-\***

REV.

**L**



**MATERIALS:**


FLANGE: OFHC (1/4 HD)  
SUBSTRATE: BERYLLIUM OXIDE  
COVER: ALUMINA  
TAB: BERYLLIUM COPPER PER ASTM B194  
RESISTIVE FILM: THIN FILM

**FINISH:**

FLANGE: NICKEL OVER COPPER  
TAB: TIN/LEAD PER MIL-T-10727

**TECHNICAL:**

NOMINAL IMPEDANCE (OHMS): 50  
FREQUENCY RANGE (GHz): DC-4.0  
TEMPERATURE COEFFICIENT:  $\pm 200$  PPM/ $^{\circ}$ C MAX  
OPERATING TEMP. ( $^{\circ}$ C):  $-55^{\circ}$  TO  $+150^{\circ}$   
VSWR (MAX): 1.15:1 DC-2.0 GHz  
1.35:1 2.0-4.0 GHz  
INPUT POWER (WATTS): 10  
ATTENUATION STABILITY: .0001 dB/dB/ $^{\circ}$ C  
\*ATTENUATION ACCURACY: 1-10 dB  $\pm 0.5$  dB  
11-20 dB  $\pm 1.0$  dB

				ECN#	N/A	APVD	DATE	REFERENCE	 8851 OLD KANSAS AVE. STUART, FL. 34997 772-286-9300					
				UNLESS OTHERWISE SPECIFIED				CATALOG						
				1. DO NOT SCALE DRAWING 2. DIMENSIONS ARE IN INCHES 3. DIMENSIONS ARE AFTER PLATING 4. CORNERS, EDGES AND FILLETS: R MAX 5. SURFACE ROUGHNESS: 6. REMOVE ALL BURRS				MATERIAL	TITLE					
				TOLERANCES				FINISH	<b>ATTENUATOR, FLANGE MOUNT, 10 WATT</b>					
				.X $\pm$		ANGLES X' $\pm$								
L	EN08-F0098	MWS	02/13/08	THE INFORMATION CONTAINED HEREIN IS: (A) CONSIDERED PROPRIETARY TO FLORIDA RF LABS INC.; (B) PROTECTED BY COPYRIGHT OWNED BY FLORIDA RF LABS INC.; (C) CONSIDERED A "WORK FOR HIRE" UNDER COPYRIGHT LAW; (D) PROTECTED BY TRADE SECRET LAWS WHICH MAKE ILLEGAL THE MISAPPROPRIATION OF THIS INFORMATION; AND (E) IS TO BE USED SOLELY FOR THE PURPOSE WHICH IT IS SUPPLIED. THIS INFORMATION SHALL NOT BE DISCLOSED IN WHOLE OR IN PART, TO ANY PARTY, FOR ANY REASON WITHOUT THE EXPRESS WRITTEN CONSENT OF A QUALIFIED EXECUTIVE OF FLORIDA RF LABS INC.				SCALE	CAGE CODE ID NO.	SIZE	DRAWING NO.:	REV.		
K	EN 06-F0592	CRH	07/13/06	2/1	2Y194	A	33-1005-*	L						
J	ECN#01279	BLP	02/20/02											
		OA	03/28/02	MFG:	MJK	03/12/02	CHKD.:	DR	03/07/02	DRAWN:	BLP	02/20/02	SHEET	OF