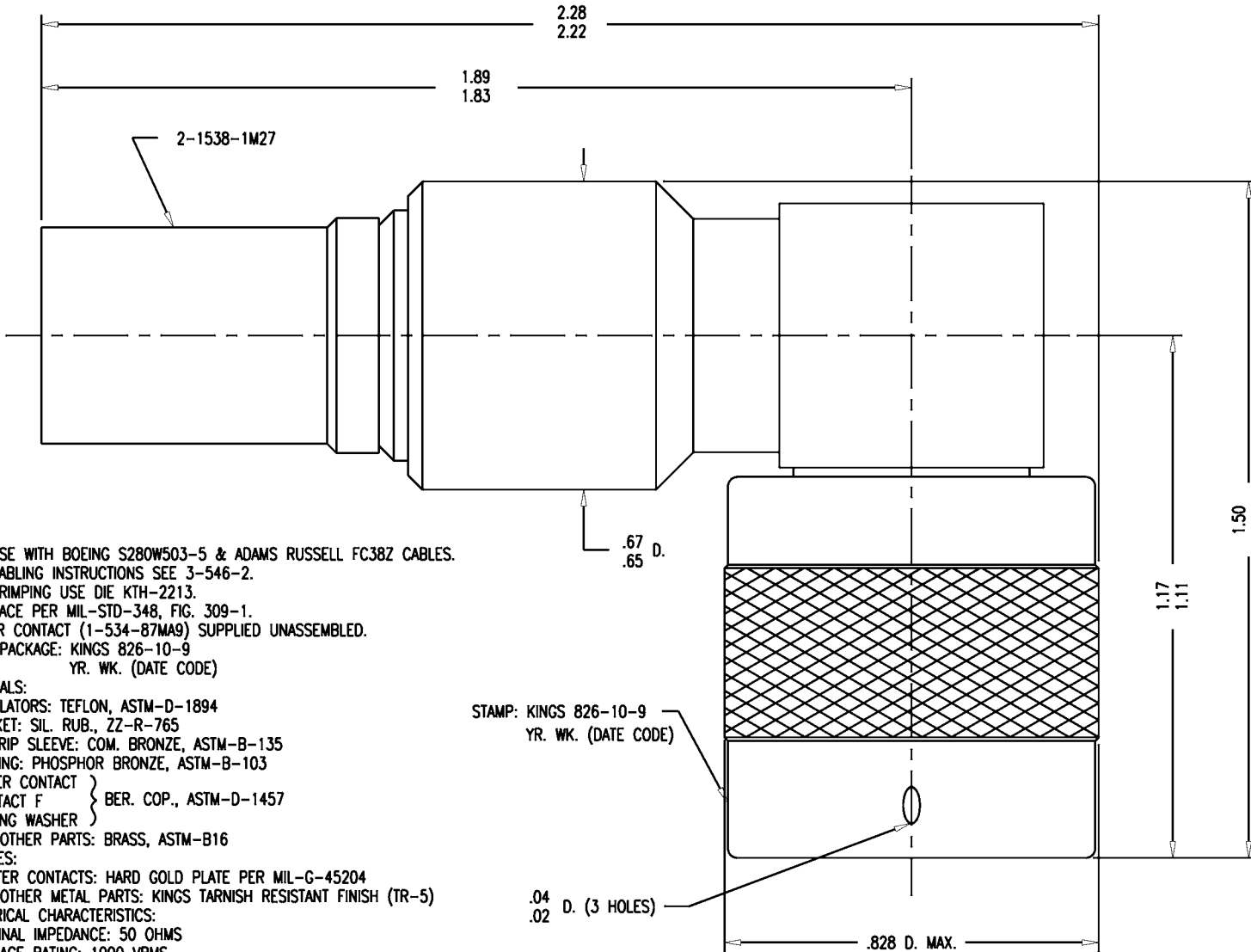


DASH NO.	M CODE	MADE FROM
----------	--------	-----------

# GSD

826-10-9



**NOTES:**

- FOR USE WITH BOEING S280W503-5 & ADAMS RUSSELL FC38Z CABLES.
- FOR CABLING INSTRUCTIONS SEE 3-546-2.
- FOR CRIMPING USE DIE KTH-2213.
- INTERFACE PER MIL-STD-348, FIG. 309-1.
- CENTER CONTACT (1-534-87MA9) SUPPLIED UNASSEMBLED.
- MARK PACKAGE: KINGS 826-10-9  
YR. WK. (DATE CODE)
- MATERIALS:  
INSULATORS: TEFLON, ASTM-D-1894  
GASKET: SIL. RUB., ZZ-R-765  
K-GRIP SLEEVE: COM. BRONZE, ASTM-B-135  
C-RING: PHOSPHOR BRONZE, ASTM-B-103  
OUTER CONTACT } BER. COP., ASTM-D-1457  
CONTACT F }  
SPRING WASHER }  
ALL OTHER PARTS: BRASS, ASTM-B16
- FINISHES:  
CENTER CONTACTS: HARD GOLD PLATE PER MIL-G-45204  
ALL OTHER METAL PARTS: KINGS TARNISH RESISTANT FINISH (TR-5)
- ELECTRICAL CHARACTERISTICS:  
NOMINAL IMPEDANCE: 50 OHMS  
VOLTAGE RATING: 1000 VRMS  
FREQUENCY RANGE: DC TO 11 GHz

**REVISIONS**

ISSUE	CHANGES
0	ER 37402 JW 06/26/97

826109S

SCALE 4:1

APPROX SURFACE AREA

WAS: E-18309

USED ON

REF: BOEING

PLUG, ANGLE, SC

DRAWN KH DATE 04/08/94

DESIGN JT DATE 04/11/94

APPR. VLS DATE 06/26/97

**KINGS**  
ELECTRONICS CO., INC.  
TUCKAHOE, NEW YORK 10707

826-10-9

# GSD