

**MATERIALS AND FINISHES**

BODY BRASS  
PLATED NICKEL

CENTER CONTACT BRASS  
PLATED SILVER

INSULATOR TEFLON

SLEEVE,NUT BRASS  
PLATED NICKEL

COUPLING NUT BRASS  
PLATED NICKEL

WASHER STEEL  
PLATED NICKEL

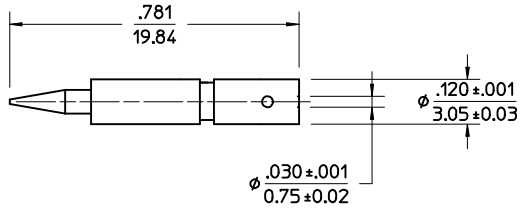
GASKET SILICONE RUBBER

**CABLE ATTACHMENT:**

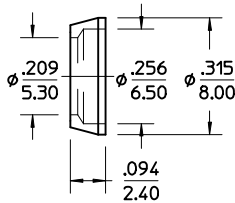
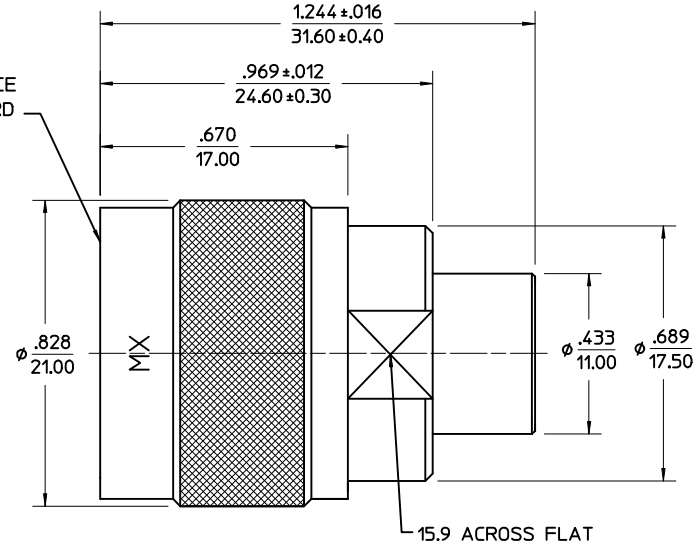
INNER CONTACT----SOLDER  
OUTER CONDUCTOR--MECHANICAL CLAMP

PACKAGING: INDIVIDUAL PLASTIC BAGS.

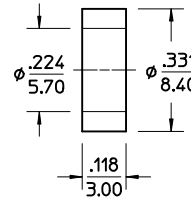
PART # 73255-5001



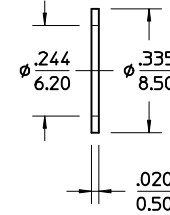
CONNECTOR INTERFACE  
PER MOLEX STANDARD  
PS-73599-0000



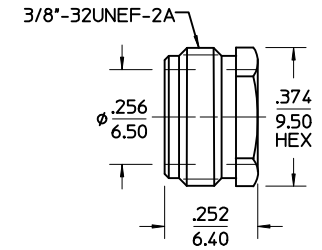
SLEEVE



GASKET



WASHER



CLAMP NUT

PS-73598-0028	PRODUCT SPECIFICATION
AS-89678-8990	ASSEMBLY INSTRUCTION
SPECIFICATION	DESCRIPTION

CHG: AS-89678-8990 WAS ES-73597-0033 TITLE CHG. 'SD' WAS 'SDA' EC NO. RF03-134 DRWN: CLAIRE 05/21/03 CHK: JOHNSON APPR: MISEN
REV B

- UNLESS OTHERWISE SPECIFIED DIMS ARE INCHES AND ANGLES ARE DEGREES.
- ✓ 63 ALL OVER.
  - NO CHATTER OR NON-UNIFORM SURFACE FINISH ALLOWED.
  - PARTS TO BE FREE OF BURRS & SHARP EDGES .005 MAX BREAK.
  - EXTERNAL THREADS TO BE ROLLED OR SINGLE POINT.
  - DIAMETERS TO BE CONCENTRIC WITHIN .003 TIR.

QUALITY SYMBOLS
MAJOR
CRITICAL

GENERAL TOLERANCES: (UNLESS SPECIFIED)	
mm	INCH
4 PLACES	± .005
3 PLACES	± .004
2 PLACES	± .003
1 PLACE	± .002
ANGULAR: ±2°	
DRAFT WHERE APPLICABLE MUST REMAIN WITHIN DIMENSIONS	

SCALE	DESIGN UNITS
	<input checked="" type="checkbox"/> mm <input type="checkbox"/> INCH
DRAWN BY & DATE C.M.HUNG 93/03/19	
CHECKED BY & DATE	
APPROVED BY & DATE	
CAD FILENAME	

THIRD ANGLE PROJECTION	
TITLE: N STRAIGHT PLUG RG59B/U, RG62A/U CLAMP/SOLDER	
MOLEX INCORPORATED - TAIWAN (MXT)	
MATERIAL NO. SEE NOTE	DRAWING NO. SD-73255-5001

1	B
SHT	REV
REVISE ON CAD ONLY	
SHEET NO. 1 of 1	SIZE B