

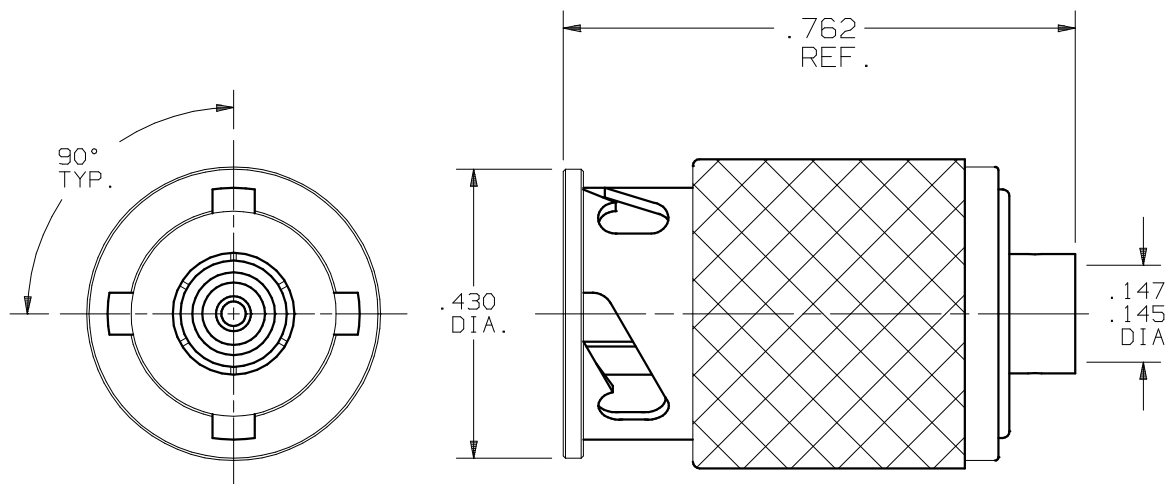
PRODUCT DATA DRAWING

CAD
GENERATED
DRAWING

DCN
CONTROLLED
DOCUMENT

DWG. NO.

SF8704-6000



MATERIALS:

BODY,
COUPLING NUT
WASHERS: STAINLESS STEEL PER AMS-5640,
UNS S30300 (TYPE 1), COND. A

INSULATOR: TEFLON PER ASTM-D-1457

CONTACTS &
LOCK RING: BERYLLIUM COPPER PER ASTM-B196
COND. TD04, ALLOY UNS-C17300

GASKETS: RUBBER; (VITON) PER MIL-R-83248
TYPE II, CLASS 1.

SPRING: STAINLESS STEEL 17-7 PH

FINISHES:

COUPLING NUT,
WASHERS &
SPRING: PASSIVATE PER QQ-P-35C, TYPE II

BODY &
CONTACTS: GOLD PER MIL-G-45204, TYPE I,
GRADE C, CLASS 0 OVER NICKEL
PER QQ-N-290, CLASS 2

ELECTRICAL:

IMPEDANCE: 50 OHMS
FREQ. RANGE: .25 TO 2.0 GHz
D.W.V.: 1000 VRMS MIN.
INSUL. RES.: 5,000 MEGOHMS

SYM.	DESCRIPTION	DATE	APPR.	UNLESS OTHERWISE SPECIFIED:	DIMENSIONS ARE IN INCHES			TITLE:
				1) ALL DIMENSIONS ARE AFTER PLATING.	DECIMALS	FRACTIONAL	ANGULAR	
-	REL. NRN 25679	11/99	STW	2) BREAK CORNERS & EDGES .005 R. MAX.	.X ±.030		X° ±1°0'	SV Microwave, Inc. 2400 Centrepark West Drive, Suite 100 West Palm Beach, FL 33409
A	REV. DCN 26136	05/00	STW	3) CHAM. 1s† & LAST THDS.	.XX ±.015	±1/64	X°X' ±15'	
B	REV. DCN 27044	05/01	STW	4) SURFACE ROUGHNESS 63 J MIL-STD-10.	.XXX ±.005			ZMA PLUG (90° TYP.) FOR .141 S.R. CABLE HIGH POWER APPLICATIONS
C	REV. DCN 28700	08/02	STW	5) DIAS. ON COMMON CENTERS TO BE CONCENTRIC WITHIN .005 T.I.R.	MATERIAL: PER BOM			
				6) REMOVE ALL BURRS.	FINISH: PER BOM		AREA: N/A	DWG. NO. SF8704-6000
				DRAWN: VMJ 11/04/99	SIZE	CAGE NO.	SCALE	
				CHECKED: STW 11/24/99	A	95077	3.5X	
				APPROVED: STW 11/24/99				