

COAXIAL RESONATOR OSCILLATOR

SURFACE MOUNT MODEL: SMC2235N

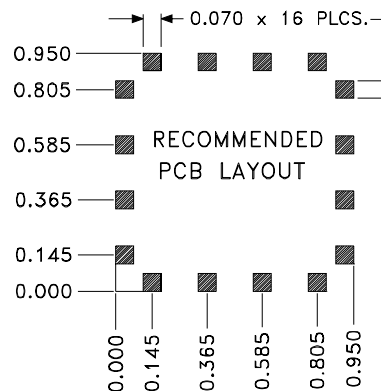
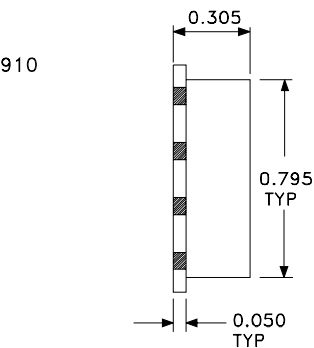
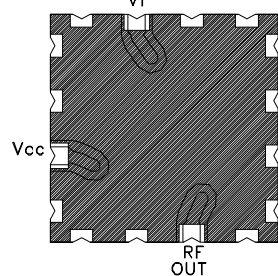
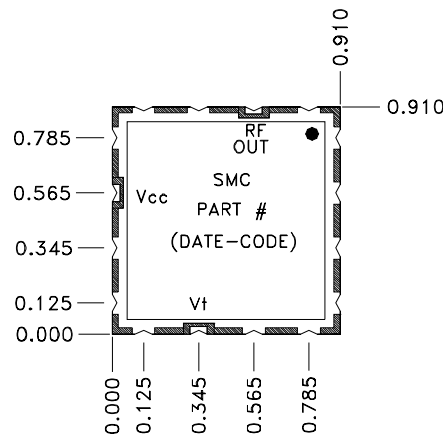
ULTRA LOW-NOISE

2235 ±3 MHz

SPECIFICATIONS

Oscillator Center Frequency:	2235 ±3 MHz	SSB Phase Noise: @ 25°C	
Tuning Voltage:	1 to 8 V (Max)	@ 1 kHz offset	-84 dBc/Hz
Tuning Sensitivity:	3 to 4 MHz/V (Typ)	@ 10 kHz offset	-110 dBc/Hz
Output Power:	2 dBm ±2dB	@ 100 kHz offset	-127 dBc/Hz
Bias Voltage:	8 VDC @ 30mA	Pulling:	2 MHz @ 1.75:1 VSWR
Harmonic Suppression:	10 dBc (Typ)	Pushing:	1 MHz/V(Typ)
		Operating Temp. Range:	-20° to +70°C

MECHANICAL OUTLINE: 165SL



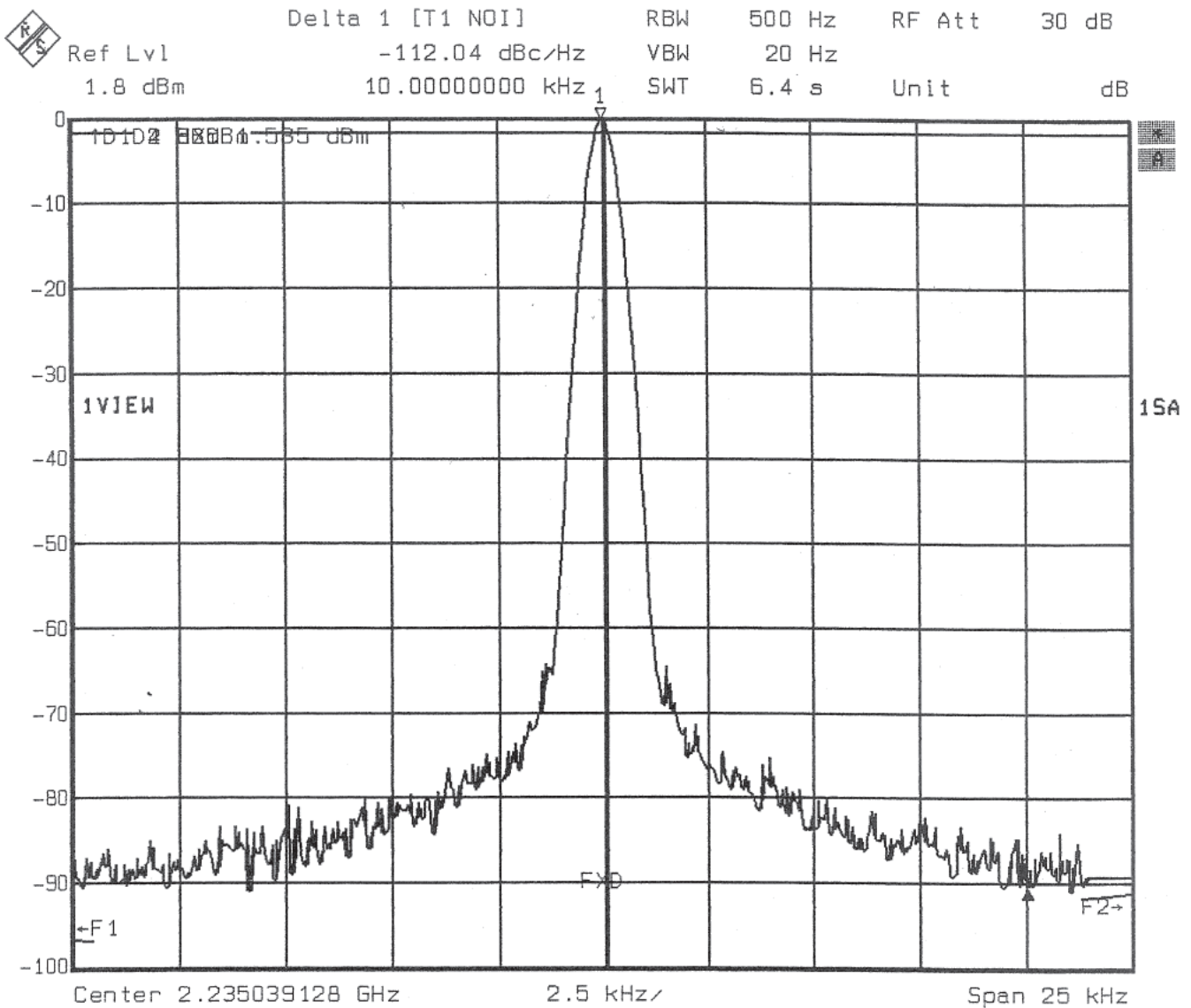
COAXIAL RESONATOR OSCILLATOR

SURFACE MOUNT MODEL: SMC2235N

ULTRA LOW-NOISE

2235 ±3 MHz

PERFORMANCE PLOTS



Copyright © 2002 Synergy Microwave Corporation

201 McLean Boulevard • Paterson, New Jersey 07504 • Tel: (973) 881-8800 • Fax: (973) 881-8361
E-Mail: sales@synergymwave.com • World Wide Web: http://www.synergymwave.com



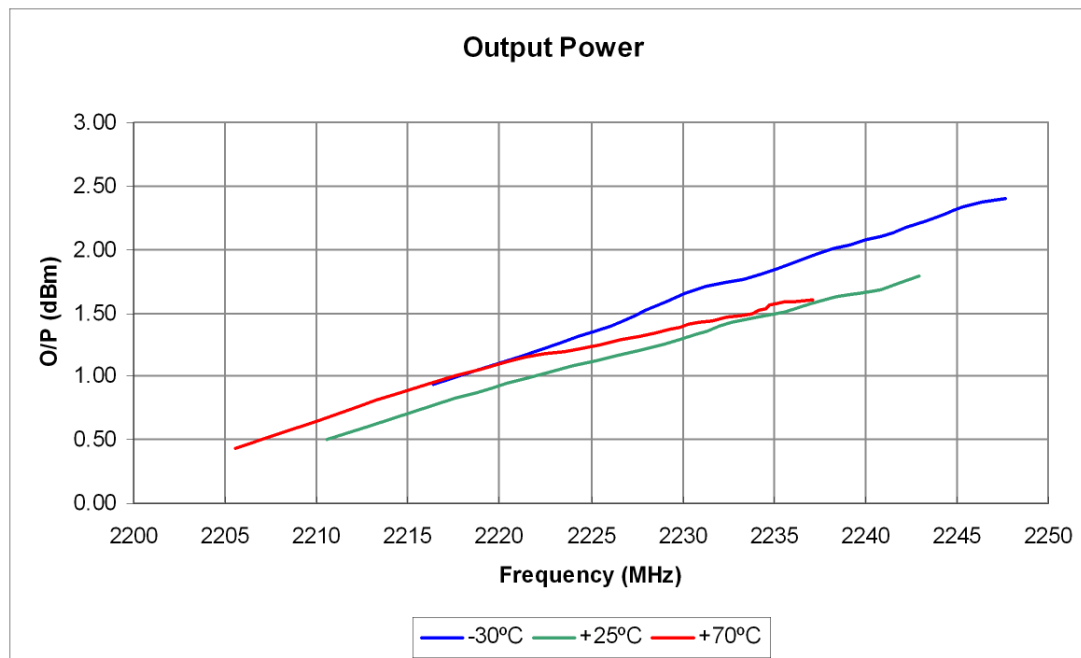
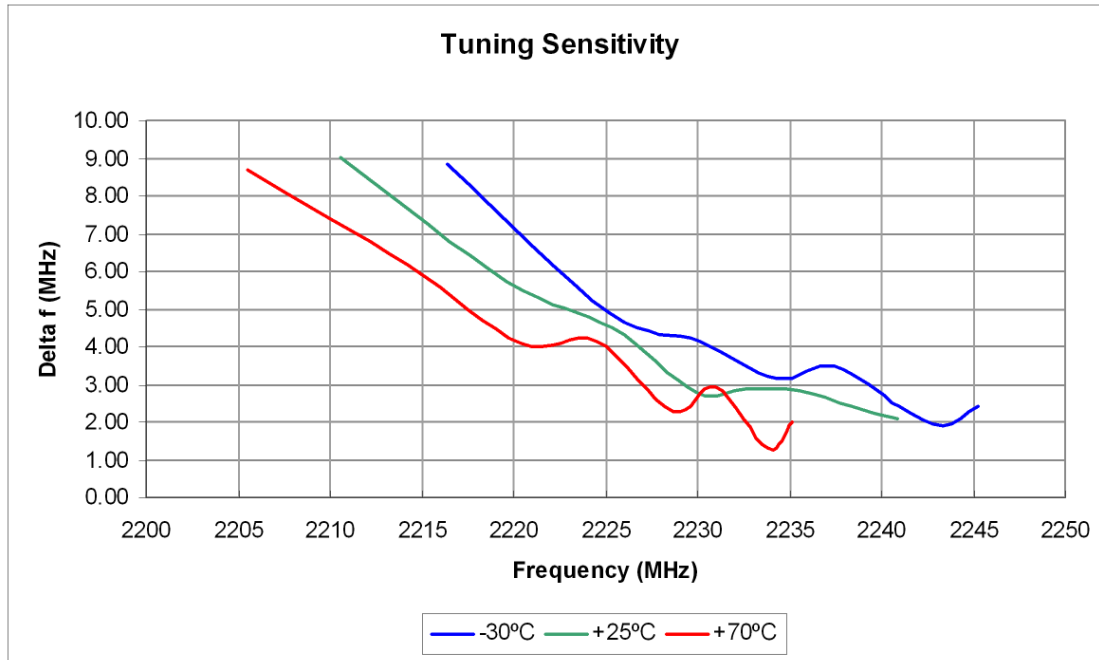
COAXIAL RESONATOR OSCILLATOR

SURFACE MOUNT MODEL: SMC2235N

ULTRA LOW-NOISE

2235 \pm 3 MHz

PERFORMANCE PLOTS



COAXIAL RESONATOR OSCILLATOR

SURFACE MOUNT MODEL: SMC2235N

ULTRA LOW-NOISE

2235 ±3 MHz

