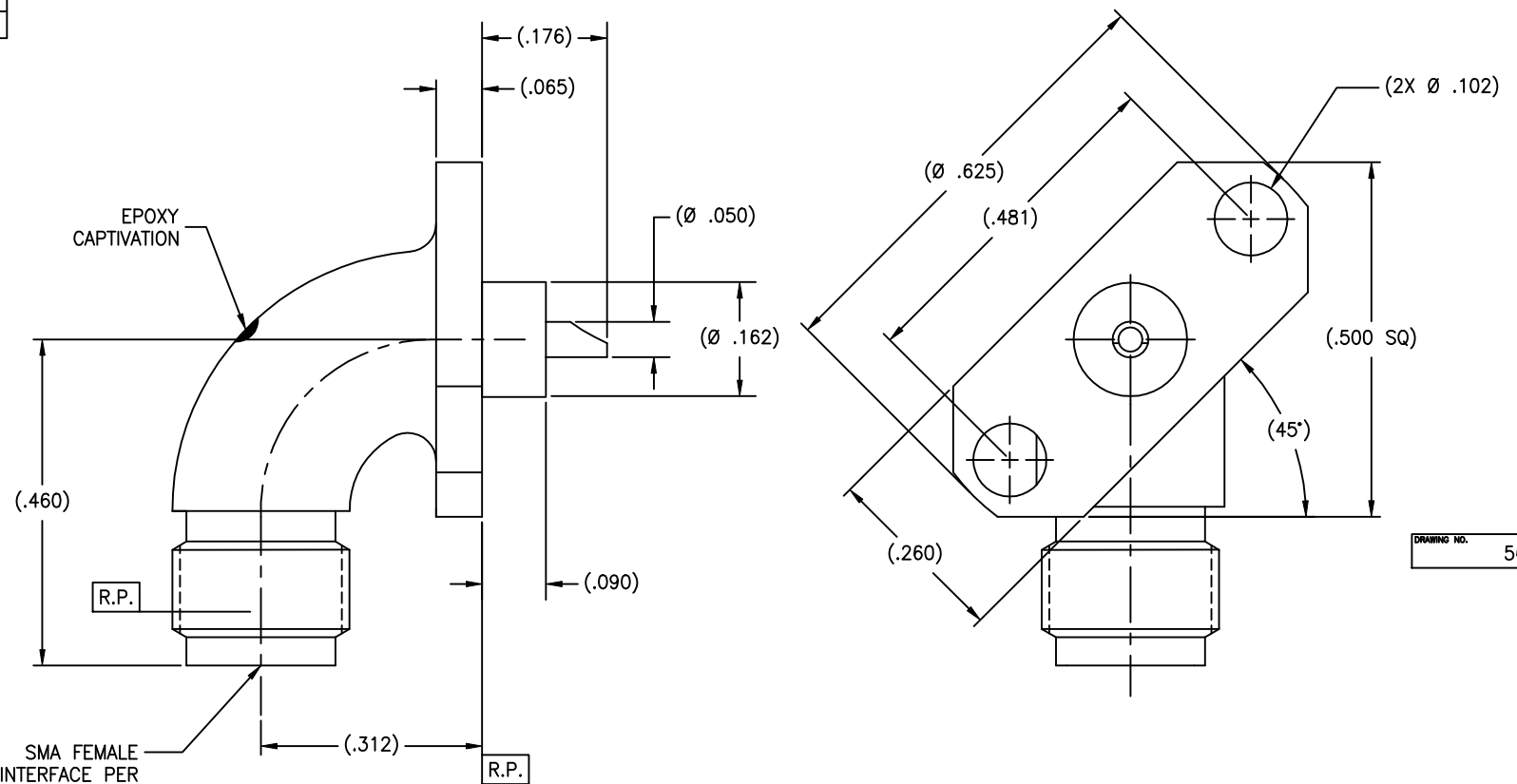


P/N	APPLICABLE NOTE(S)
BASIC	1,2
SF	1,2
CC	1,2
CCSF	1,2
CCESF	1,2

REVISIONS				
ZONE	REV	DESCRIPTION	DATE	BY
-	-	-	-	-



NOTES(S):

1. MATERIAL(S):
 - 1.1 BODY: 304 SST PER AMS-5511
 - 1.2 CENTER CONDUCTOR: BeCu ALLOY C173 PER ASTM B-196.
 - 1.3 INSULATOR: PTFE PER ASTM D-1710.
 - 1.4 EPOXY: (FOR CC's) SIGMA VF TYPE HV
 - 1.5 EPOXY: (FOR CE's) ABLEBOND 16-1
2. FINISH(ES):
 - 2.1 BODY:
 - (FOR CCSF's) PASSIVATED PER ASTM A-967
 - (FOR CC's) GOLD PLATE PER ASTM B-488 OVER NICKEL PLATE PER AMS-QQ-N-290.
 - 2.2 CENTER CONDUCTOR:
 - GOLD PLATE PER ASTM B-488 OVER NICKEL PLATE PER AMS-QQ-N-290.
 - 2.3 INSULATOR & EPOXY: NONE

NOTICE
 THIS DRAWING EMBODIES A CONFIDENTIAL PROPRIETARY DESIGN ORIGINATED BY TENSOLITE COMPANY AND ALL DESIGN, MANUFACTURING, REPRODUCTION, USE AND SALE RIGHTS REGARDING THE SAME ARE EXPRESSLY RESERVED. IT IS SUBMITTED UNDER A CONFIDENTIAL RELATIONSHIP FOR A SPECIFIED PURPOSE AND THE RECIPIENT AGREES BY ACCEPTING THIS DRAWING NOT TO SUPPLY OR DISCLOSE ANY INFORMATION REGARDING IT TO ANY UNAUTHORIZED PERSON TO INCORPORATE IN OTHER PROJECTS ANY SPECIAL FEATURES RELIANT TO THIS DESIGN. ALL PATENT RIGHTS HERETO ARE EXPRESSLY RESERVED BY TENSOLITE COMPANY, LONG BEACH, CALIFORNIA 90815.

TOLERANCES AND NOTES EXCEPT AS NOTED
 DIMENSIONS ARE IN INCHES.
 LINEAR .001 ± 0.015
 ANGULAR ± 1/2°
 FRACTION ± 1/32

1. MACHINE FINISH: 63/RMS
2. BREAK ALL SHARP EDGES .003 MAX.
3. MACHINED FILLETS: .005 MAX.
4. MACHINED SURFACES SQUARE TO RESPECTIVE AXIS WITHIN .005 INCHES PER INCH.
5. MACHINED DIAMETERS CONCENTRIC WITHIN .002 T.I.R.
6. DIMENSIONS TO BE MET BEFORE PLATING.
7. CHAMFER ALL THREADS 45°.
8. THREADS PER 14-28
9. REMOVE FRAVED EDGES ON TEFLON.
10. REMOVE ALL BURRS.

SEE NOTES		-	SEE NOTES	-
MATERIAL		SIZE	SPECIFICATION	PROCUREMENT
NEXT ASSY		Tensolite HIGH PERFORMANCE CABLES & INTERCONNECT SYSTEMS Long Beach, California 90815		
APPROVAL INITIALS	DATE	TITLE SMA FEMALE RADIUS RIGHT ANGLE 2 HOLE FLANGE (.260 X .625) MOUNT (45° RIGHT) TO SOLDER POT TERMINATION		
DRAWN BY IMG	04.09.02	SCALE 6/1	SUB-DIRECTORY/FILENAME OL_	SHEET 1 OF 1
CHECKED		SIZE C	CAGE CODE 30990	DRAWING NO. 5642
ENGINEERING ATV	06.19.02			REV. -