

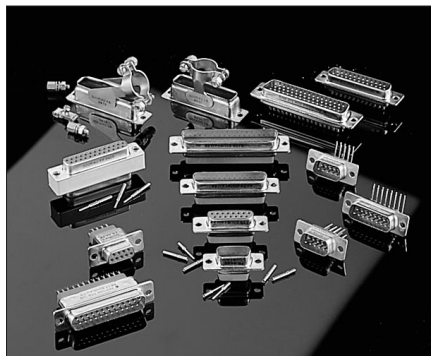


Applications

Satellite
 Launcher
 Space station
 Shuttle hardware

Standards

ESA/SCC 3401 - 001



D-Sub with non removable contacts

ESA/SCC 3401 001 non-magnetic connectors are equipped with non removable contacts.

They are available with solder buckets, straight spills, angled spills, wire wrap contacts and mixed layout with coaxial or power contacts.

This qualified series is suitable for Flying Models.

SCC specification number	3401 001	01	B	D	B	M	Y	9W4	P	NMB	OL3
Variant :	not to be modified										
B testing level :	not to be modified										
D * M Series											
Shell size	E - A - B - C - D										
Without indication :	fixed mounting										
Y :	float mounting										
Contact layouts (see table)	page 359										
Contact type											
P =	pin										
S =	socket										
Residual magnetism level											
NMB :	≤ 200 gammas										
NMC :	≤ 20 gammas										
Terminations :											
- without indication :	solder buckets										
- OL3 :	straight spills										
- 1AON :	angled spills, 2.54 spacing										
- 1BON :	angled spills, 2.84 spacing										
- F179A :	wire wrap, 3 wraps										

D*M-NMB non-magnetic connectors use the same components as the 3401 001 ESA/SCC connectors they are based on. They are used for applications demanding high quality level, without lot acceptance test or traceability.

They are available with solder buckets, straight spills, angled spills, wire wrap contacts, and mixed layout with coaxial or power contacts.

This version is suitable for Engineering Models.

D * M Series	D	B	M	F	9W4	P	3	11	NMB
Shell size	E - A - B - C - D								
Without indication :	fixed mounting								
F :	float mounting								
Contact layouts (see table)	page 359								
Contact type									
P =	pin								
S =	socket								
Terminations :									
- 0 :	solder buckets								
- 3 :	straight spills, # 0.63								
- 4 :	wire wrap, 3 wraps								
- 5 :	angled spills, # 0.63, 9.4 foot print, 2.54 pitch between rows								
- 8 :	angled spills, # 0.63, 9.4 foot print, 2.84 pitch between rows								
Contact plating									
- 11 :	1.27 micron min, gold								
- 38 :	2.54 micron min. gold (ESA/SCC 3401 001)								
Residual magnetism level									
- NMB :	≤ 200 gammas								
- NMC :	≤ 20 gammas								

SOURIAU D-Sub ESA/SCC 3401 001



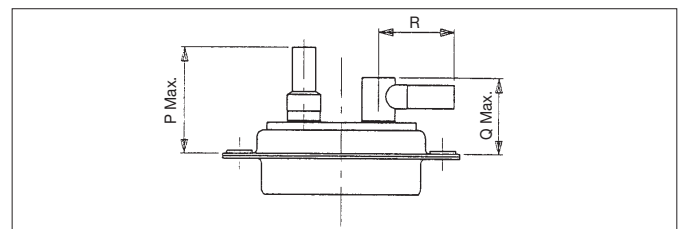
Layouts (Male front view)

Shell size		Layouts	Shell size	Layouts		
E	9		C	37		
	5W1			17W2		
A	15			25W3		
	11W1			21WA4		
	7W2			17W5		
	3W3			8W8		
B	25			D	50	
	17W2				36W4	
	13W3				24W7	
	9W4					
	5W5					

Dimensions Connectors 3401 001 & D*M - NMB

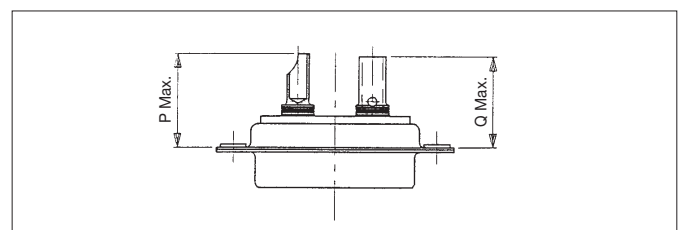
<p>Solder buckets</p> <p>9.91 Maxl 0.39</p>	<p>Straight spills</p> <p>Ø 0.51 0.02 4.20^{+0.10} 0.15 9.80^{+0.07}/0.386</p>	<p>Wire wrap</p> <p>12.60 mm 0.496 1.77/0.65 0.66/0.25 19.30 Maxl 0.760</p>
<p>Angle spills 1AON/500</p> <p>2.54 0.1 2.54 0.1 5.00^{+0.3} 9.40^{+0.1} 0.37 11.25^{+0.05}/0.443 BIE a C 12.65^{+0.05}/0.498 BID Ø 0.51^{+0.02} 0.024</p>	<p>Angle spills IBON/800</p> <p>2.84 0.112 2.84 0.112 5.00^{+0.3} 9.40^{+0.1} 0.37 11.25^{+0.05}/0.443 BIE a C 12.65^{+0.05}/0.498 BID Ø 0.51^{+0.02} 0.024</p>	

Coaxial contacts 3401 004 & 8949-004-NMB



Variants	P	Q	R
01 - 02 - 05 - 06 - 11 - 12 - 15 - 16	18.8/.740		
09 - 10 - 19 - 20	21.5/.846		
03 - 04 - 07 - 08		13.5/.531	13/.512
13 - 14 - 17 - 18		13.46/.530	13/.512

Power contacts 3401 040 & 8949-040-NMB



Variants	P	Q
01 - 02 - 04 - 05 - 06	16.9/.665	
07 - 08 - 09 - 10 - 11 - 12		19/.748



Coaxial contacts for 3401 001 & D* M Series

Termination	ESA part number (Flying Models)	SOURIAU part number (Engineering Models)	Type	Shape	Wire type (*)
Solder buckets	3401 004 01B	8949 - 004 - 01NMB	Male	straight	RG 178 BU RG 196 AU KX 21 A
	2401 004 02B	8949 - 004 - 02NMB	Female	straight	
	3401 004 03B	8949 - 004 - 03NMB	Male	90°	
	3401 004 04B	8949 - 004 - 04NMB	Female	90°	
	3401 004 05B	8949 - 004 - 05NMB	Male	straight	KX 22 A RG 179 BU RG 316 U RG 188 AU 50 CIS
	3401 004 06B	8949 - 004 - 06NMB	Female	straight	
	3401 004 07B	8949 - 004 - 07NMB	Male	90°	
	3401 004 08B	8949 - 004 - 08NMB	Female	90°	
	3401 004 09B	8949 - 004 - 09NMB	Male	straight	RG 180 BU
	3401 004 10B	8949 - 004 - 10NMB	Female	straight	
Crimp contacts	3401 004 11B	8949 - 004 - 11NMB	Male	straight	RG 178 BU GR 196 AU KX 21 A
	3401 004 12B	8949 - 004 - 12NMB	Female	straight	
	3401 004 13B	8949 - 004 - 13NMB	Male	90°	
	3401 004 14B	8949 - 004 - 14NMB	Female	90°	
	3401 004 15B	8949 - 004 - 15NMB	Male	straight	KX 22 A RG 179 BU RG 316 U RG 188 AU 50 CIS
	3401 004 16B	8949 - 004 - 16NMB	Female	straight	
	3401 004 17B	8949 - 004 - 17NMB	Male	90°	
	3401 004 18B	8949 - 004 - 18NMB	Female	90°	
	3401 004 19B	8949 - 004 - 19NMB	Male	straight	RG 180 BU
	3401 004 20B	8949 - 004 - 20NMB	Female	straight	

(*) 50 CIS : according to ESA/SCC 3902 001.
 RG 176 B/U, RG 196 A/U, RG 179 B/U
 RG 316 U, RG 188 A/U, RG 180 B/U according to MIL-C-117
 KX 21 A/22 : according to NFC 93550

Power contacts for 3401 001 & D*M Series

Termination	ESA part number (Flying Models)	SOURIAU part number (Engineering Models)	Type	Wire size (AWG)
Solder buckets	3401 040 01 B	8949 - 040 - 01 NMB	Male	8
	3401 040 02 B	8949 - 040 - 02 NMB	Female	8
	3401 040 03 B	8949 - 040 - 03 NMB	Male	12
	3401 040 04 B	8949 - 040 - 04 NMB	Female	12
	3401 040 05 B	8949 - 040 - 05 NMB	Male	16
	3401 040 06 B	8949 - 040 - 06 NMB	Female	16
Crimp contacts	3401 040 07 B	8949 - 040 - 07 NMB	Male	8
	3401 040 08 B	8949 - 040 - 08 NMB	Female	8
	3401 040 09 B	8949 - 040 - 09 NMB	Male	10
	3401 040 10 B	8949 - 040 - 10 NMB	Female	10
	3401 040 11 B	8949 - 040 - 11 NMB	Male	12-14
	3401 040 12 B	8949 - 040 - 12 NMB	Female	12-14

SOURIAU' s contacts are identified by 3 engraved stripes.