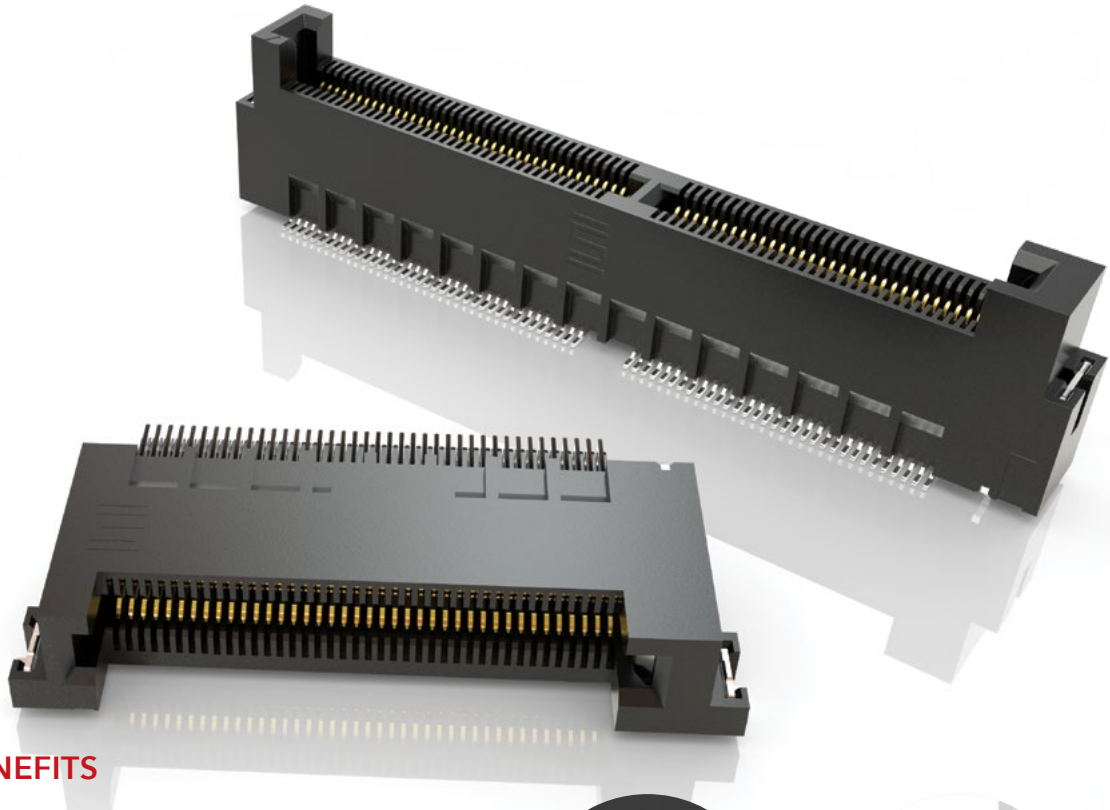


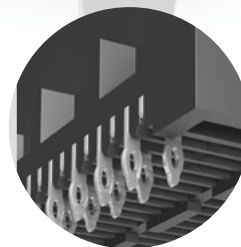
MICRO EDGE CARD SYSTEMS

0.50 mm, 0.635 mm, 0.80 mm, 1.00 mm, 1.27 mm, 2.00 mm PITCH

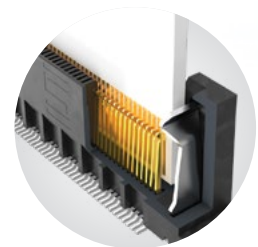


FEATURES & BENEFITS

- Up to 56 Gbps PAM4
- PCI Express® 4.0 (MEC5 Series)
- Solutions for .062" (1.60 mm), and .093" (2.36 mm) thick cards
- Choice of pitch: 0.50 mm, 0.635 mm, 0.80 mm, 1.00 mm, 1.27 mm, 2.00 mm
- Vertical, right-angle, edge mount
- Available in surface mount and through-hole



Staggered press-fit tails
(MEC8-VP)



Justification beam ensures
card and body are flushed
(MEC5)

KEY SPECIFICATIONS

SERIES	PITCH	TOTAL POSITIONS	INSULATOR MATERIAL	CONTACT MATERIAL	OPERATING TEMP RANGE	CURRENT RATING	VOLTAGE RATING	LEAD-FREE SOLDERABLE
MEC5	0.50 mm	60-200	Black LCP	Phosphor Bronze	-55 °C to +125 °C	1.5 A (2 pins)	125 VAC	Yes
MEC6	0.635 mm	20-140	Black LCP	Phosphor Bronze	-55 °C to +125 °C	2.4 A (2 pins)	195 VAC	Yes
MEC8	0.80 mm	20-140	Black LCP	Phosphor Bronze	-55 °C to +125 °C	1.8 A (4 pins)	185 VAC	Yes
MEC1	1.00 mm	20-140	Black LCP	Phosphor Bronze	-55 °C to +125 °C	2.2 A (2 pins)	250 VAC	Yes
MECF	1.27 mm	10-100	Black/Natural LCP	BeCu	-55 °C to +125 °C	3.5 A (2 pins)	280 VAC	Yes
MEC2	2.00 mm	10-100	Black/Natural LCP	BeCu	-55 °C to +125 °C	3.5 A (2 pins)	238 VAC	Yes

(0.80 mm) .0315" PITCH • VERTICAL AND PRESS-FIT EDGE CARD SOCKET

MEC8 - **1** POSITIONS PER ROW - **02** PLATING OPTION - **DV** OTHER OPTIONS - **"X"R**

10, 20, 30, 40,
50, 60, 70

-L
= 10 μ" (0.25 μm)
Gold on contact,
Matte Tin on tail

-A
= Alignment Pin

-K
= (5.50 mm) 2.17" DIA
Polyimide Pick
& Place Pad

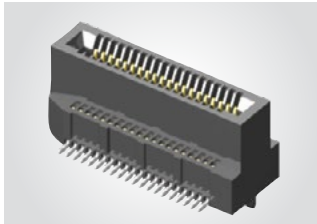
Leave blank for
Tray Packaging

-TR
= Tape & Reel

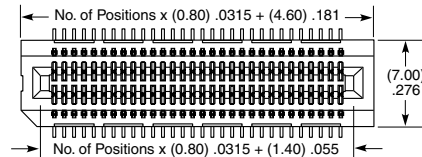
-FR
= Full Reel
Tape & Reel
(must order max.
quantity per reel;
contact Samtec for
quantity breaks)

MEC8-DV

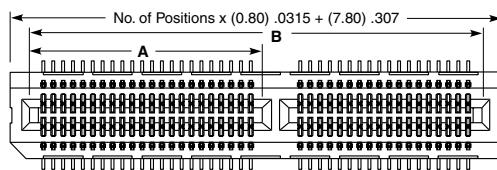
Card Mates:
(1.60 mm) .062"
thick card



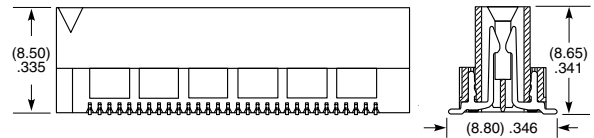
POSITIONS PER ROW	A	B
40	(18.90) .744	(36.60) 1.441
50	(22.90) .902	(44.60) 1.756
60	(26.90) 1.059	(52.60) 2.071
70	(30.90) 1.217	(60.60) 2.386



10, 20, & 30 POSITIONS



40, 50, 60 & 70 POSITIONS



View complete specifications at: samtec.com?MEC8-DV

MEC8 - **1** POSITIONS PER ROW - **02** CARD THICKNESS - **-L** PLATING OPTION - **-VP** TAIL

10, 20, 30, 40

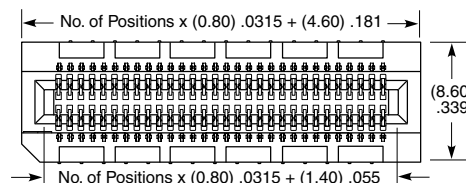
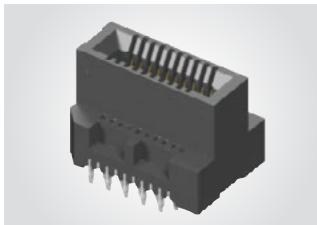
-02
= (1.60 mm) .062"
thick card

-L
= 10 μ" (0.25 μm)
Gold on contact,
Matte Tin on tail

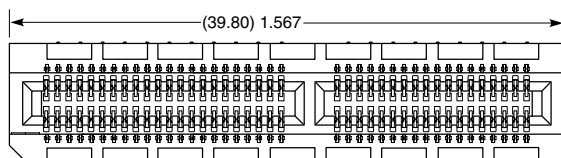
-VP
= Press-fit

MEC8-VP

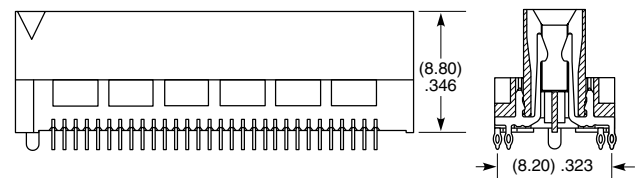
Card Mates:
(1.60 mm) .062"
thick card



10, 20 & 30 POSITIONS



40 POSITIONS



Note:
Some sizes, styles and
options are non-standard,
non-returnable.

View complete specifications at: samtec.com?MEC8-VP

Mouser Electronics

Authorized Distributor

Click to View Pricing, Inventory, Delivery & Lifecycle Information:

Samtec:

[MEC8-110-02-L-DV-A-K-TR](#) [MEC8-130-02-L-DV-A](#) [MEC8-130-02-L-DV-A-K](#) [MEC8-120-02-L-DV-A-K-TR](#) [MEC8-160-02-L-DV-A](#) [MEC8-170-02-L-DV-A](#) [MEC8-110-02-L-VP](#) [MEC8-120-02-L-VP](#) [MEC8-110-02-L-DV-A](#) [MEC8-110-02-L-DV](#) [MEC8-120-02-L-DV-A](#) [MEC8-140-02-L-DV-A](#) [MEC8-150-02-L-DV-A](#) [MEC8-120-02-L-DV-A-K](#) [MEC8-130-02-L-DV-A-K-TR](#) [MEC8-110-02-L-DV-A-TR](#) [MEC8-120-02-S-DV-A-K-TR](#) [MEC8-160-02-S-DV-A](#) [MEC8-120-02-S-VP](#) [MEC8-130-02-L-VP](#) [MEC8-140-02-L-VP](#) [MEC8-140-02-S-DV-TR](#) [MEC8-140-02-S-VP](#) [MEC8-150-01-S-DV-A-K-TR](#) [MEC8-150-01-L-DV-A](#) [MEC8-170-01-L-DV-A](#) [MEC8-140-02-L-DV](#) [MEC8-140-02-L-DV-A-K](#) [MEC8-140-02-L-DV-A-K-TR](#) [MEC8-140-02-L-DV-A-TR](#) [MEC8-140-02-L-DV-K](#) [MEC8-110-01-L-DV](#) [MEC8-110-02-L-DV-A-K](#) [MEC8-110-02-L-DV-K](#) [MEC8-110-02-L-DV-K-TR](#) [MEC8-110-02-L-DV-LC](#) [MEC8-140-01-L-DV-A](#) [MEC8-140-01-L-DV-A-K](#) [MEC8-170-02-L-DV-A-K-TR](#) [MEC8-170-02-L-DV-K](#) [MEC8-110-01-L-DV-A](#) [MEC8-110-01-L-DV-K](#) [MEC8-110-01-L-DV-LC](#) [MEC8-110-01-LM-DV-LC](#) [MEC8-170-02-S-DV-A](#) [MEC8-170-02-SM-DV-A](#) [MEC8-120-02-L-DV-A-TR](#) [MEC8-120-02-L-DV-K](#) [MEC8-150-02-LM-DV-A-K-TR](#) [MEC8-150-02-LM-DV-K](#) [MEC8-170-02-L-DV](#) [MEC8-170-02-L-DV-A-K](#) [MEC8-170-02-L-DV-K-TR](#) [MEC8-170-02-LM-DV-A](#) [MEC8-170-02-LM-DV-A-K](#) [MEC8-170-02-LM-DV-A-K-TR](#) [MEC8-160-02-L-DV-LC](#) [MEC8-160-02-LM-DV](#) [MEC8-160-02-LM-DV-A-K](#) [MEC8-170-01-L-DV](#) [MEC8-170-01-L-DV-A-K](#) [MEC8-170-01-L-DV-LC](#) [MEC8-150-02-SM-DV-LC-K-TR](#) [MEC8-160-01-L-DV-A](#) [MEC8-160-02-L-DV](#) [MEC8-160-02-L-DV-A-K](#) [MEC8-160-02-L-DV-A-K-TR](#) [MEC8-160-02-L-DV-K](#) [MEC8-150-02-S-DV-A-K-TR](#) [MEC8-150-02-S-DV-K-TR](#) [MEC8-150-02-S-DV-LC-K-TR](#) [MEC8-150-02-SM-DV-A](#) [MEC8-150-02-SM-DV-A-K](#) [MEC8-150-02-SM-DV-A-K-TR](#) [MEC8-150-02-L-DV-A-K-TR](#) [MEC8-150-02-L-DV-K](#) [MEC8-150-02-L-DV-K-TR](#) [MEC8-150-02-LM-DV-A](#) [MEC8-150-02-S-DV-A](#) [MEC8-150-02-S-DV-A-K](#) [MEC8-145-02-L-DV](#) [MEC8-145-02-L-DV-A-K](#) [MEC8-145-02-L-DV-LC](#) [MEC8-150-01-L-DV](#) [MEC8-150-02-L-DV](#) [MEC8-150-02-L-DV-A-K](#) [MEC8-140-02-LM-DV](#) [MEC8-140-02-LM-DV-A](#) [MEC8-140-02-LM-DV-A-K](#) [MEC8-140-02-LM-DV-A-K-TR](#) [MEC8-140-02-S-DV](#) [MEC8-140-02-S-DV-A](#) [MEC8-135-01-LM-DV-A-K](#) [MEC8-135-02-L-DV](#) [MEC8-135-02-L-DV-A](#) [MEC8-135-02-L-DV-A-K](#) [MEC8-140-01-L-DV](#) [MEC8-140-02-L-DV-LC](#) [MEC8-130-02-LM-DV-A](#) [MEC8-130-02-LM-DV-A-K](#)