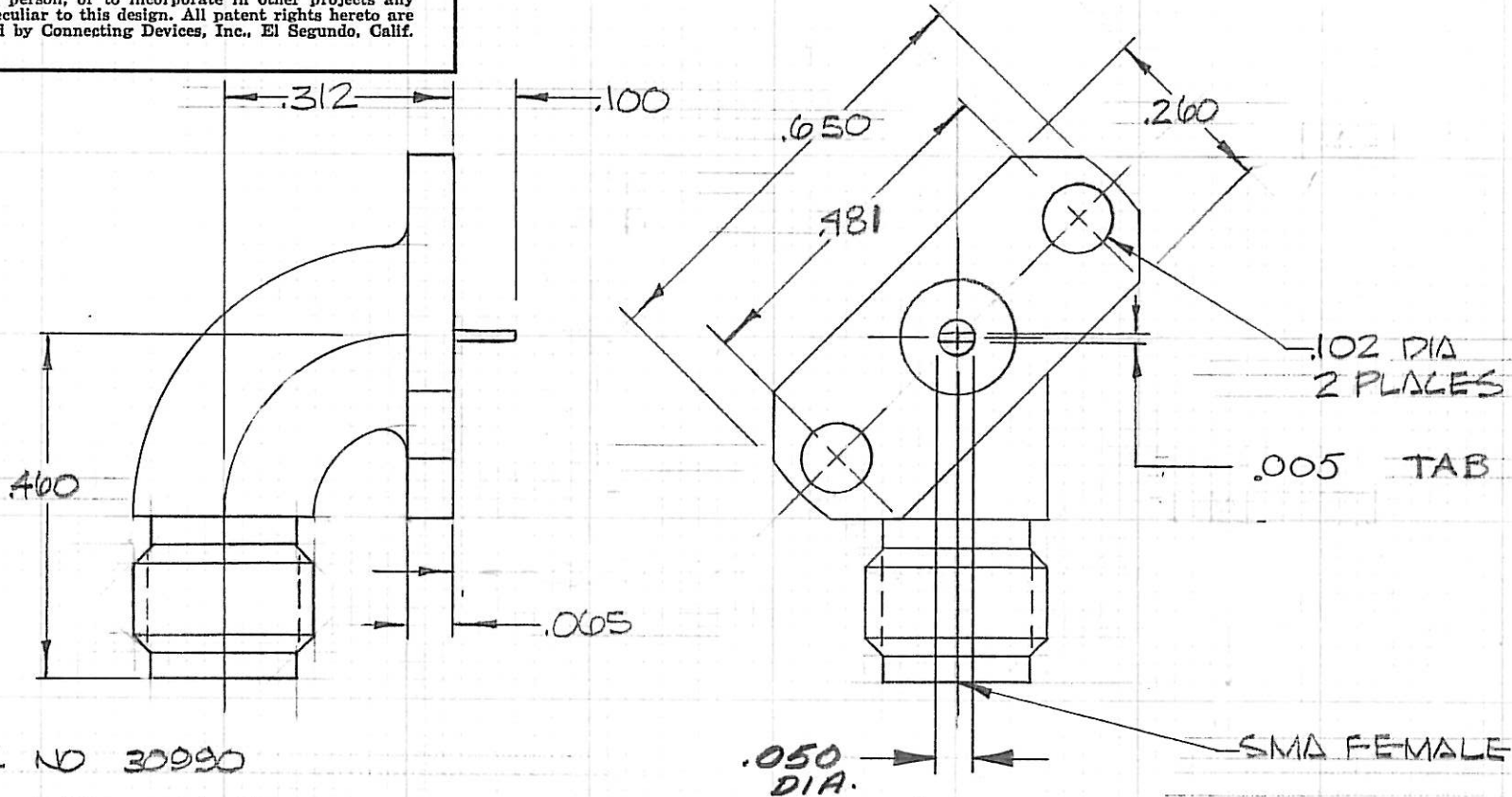


NOTICE

This drawing embodies a CONFIDENTIAL proprietary design originated by Connecting Devices, Inc., and all design, manufacturing, reproduction, use and sale rights regarding the same are expressly reserved. It is submitted under a confidential relationship for a specified purpose, and the recipient agrees by accepting this drawing not to supply or disclose any information regarding it to any unauthorized person, or to incorporate in other projects any special feature peculiar to this design. All patent rights hereto are expressly reserved by Connecting Devices, Inc., El Segundo, Calif.



CDI 5045

LET. CHG.

- (3) FSC NO 30990
- (2) ADD SUFFIX CC TO PART NO FOR CAPTIVATED CONTACT
- (1) ADD SUFFIX SF TO PART NO FOR STAINLESS FINISH

LET.	NO.	MAT'L	DIM.	TOLERANCES AND NOTES EXCEPT AS NOTED	MATERIAL	SIZE	SPECIFICATION	PROCUREMENT	
				DIMENSIONS ARE IN INCHES LINEAR .XX ± .015 .XXX ± .005 FRACTION ± 1/32 ANGULAR ± 1/2°	STAINLESS STEEL		MIL-C-39012		
				1. MACHINE FINISH 63 RMS	FINISH	HEAT TREAT	C	1/29/72	
				2. BREAK ALL SHARP EDGES .005-.010	GOLD		APPR.	1/19/72	
				3. ALL MACHINED FILLETS R.	CONNECTING DEVICES Inc. A Subsidiary of PLASCO INTERNATIONAL PRODUCTS, Inc.			CHK.	1/19/72
				4. ALL MACHINED SURFACES SQUARE TO RESPECTIVE AXIS WITHIN .005 PER INCH.				DR.	1/19/72
				5. MACHINED DIAMETERS TO BE CONCENTRIC WITHIN .002-.005 T.I.R.	SMA FEMALE / 2 HOLE FLANGE			CDI 5045	C
				6. DIMENSIONS TO BE MET BEFORE PLATING.					
				7. CHAMFER ALL THDS. 45°					
				8. THREADS PER H-28.					
				9. REMOVE FRAYED EDGES ON TEFLON.					
				10. REMOVE ALL BURRS.					
NEXT ASSY.									
WEIGHT		SCALE							
		4/1							