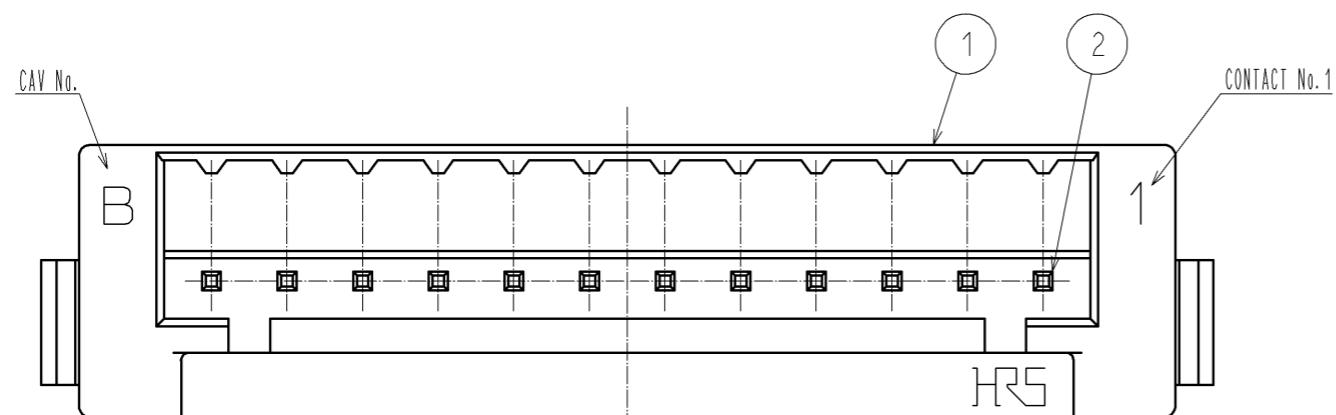
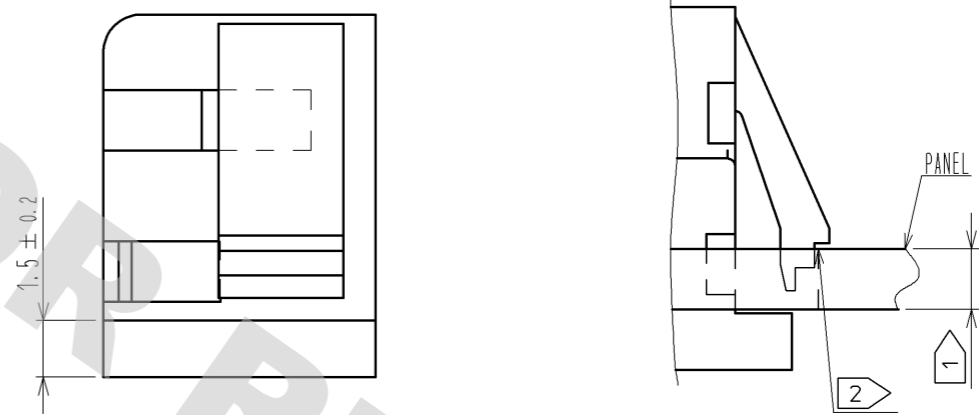
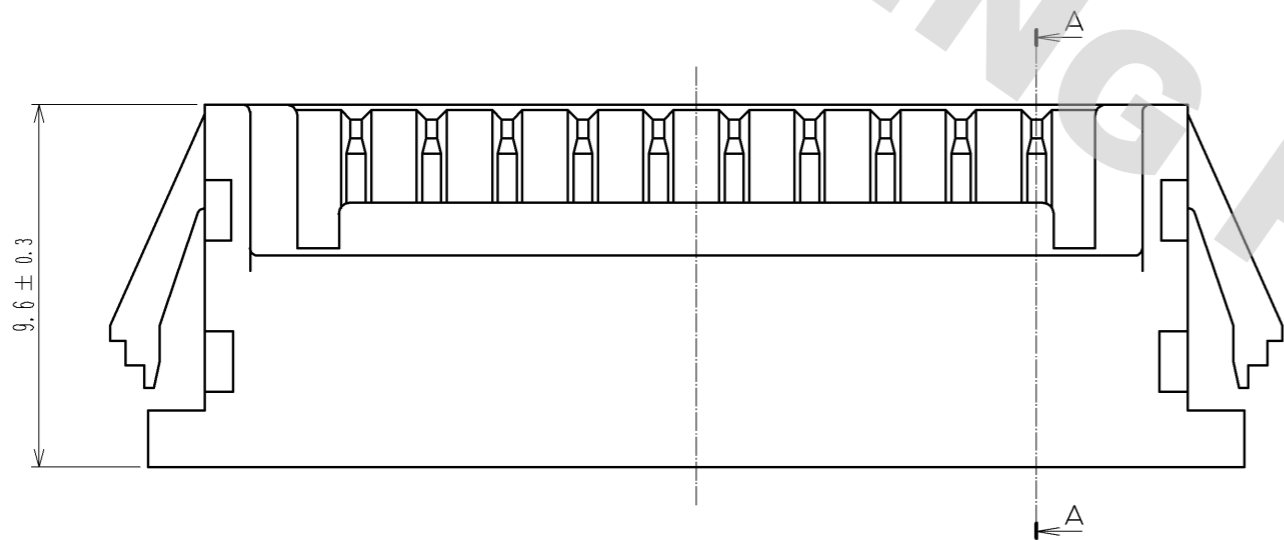
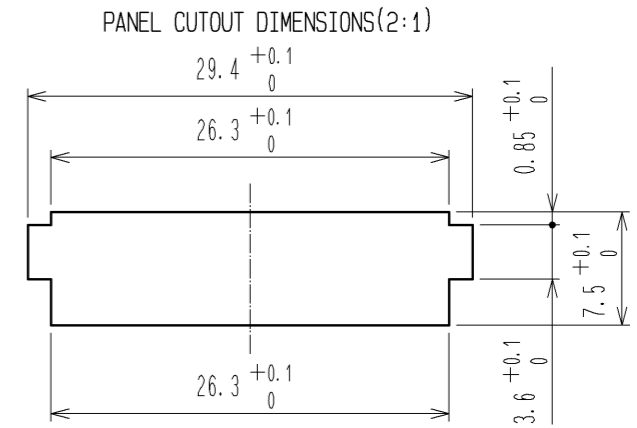
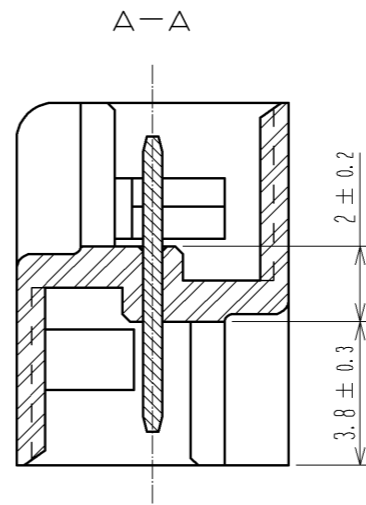
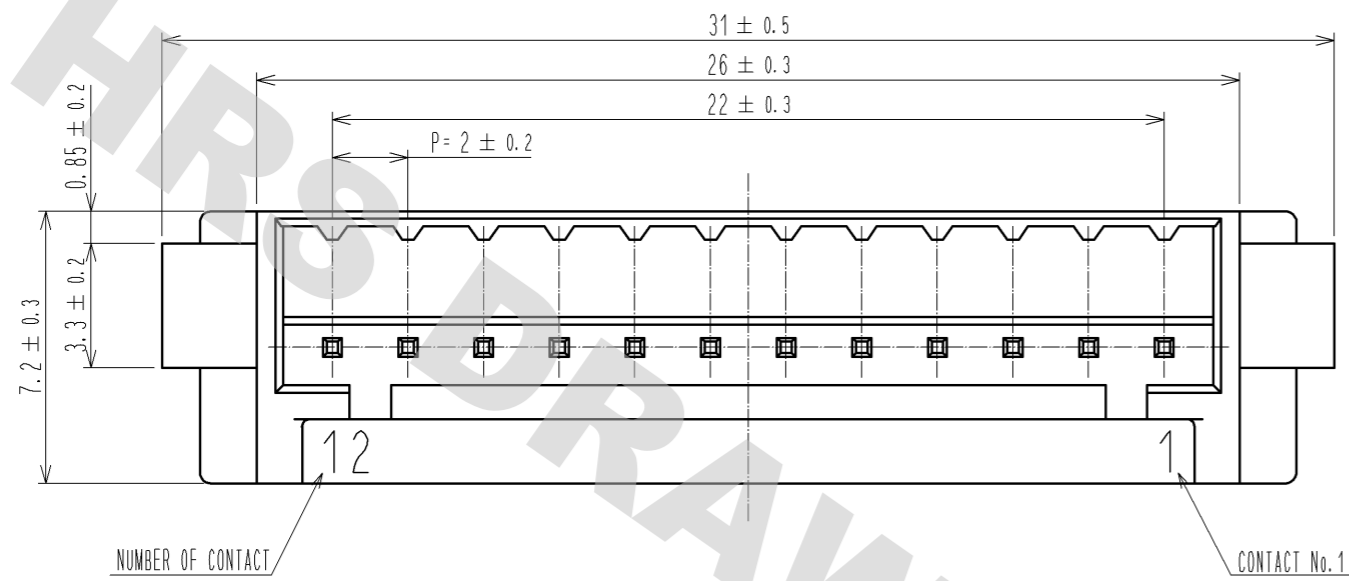


DRAWING FOR REFERENCE: This is subject to change without notice  
08/11/2012



NOTE 1 APPLICABLE PANEL THICKNESS : 1.6~0.8mm  
(NOTE THAT SOME LOOSENESS IS UNAVOIDABLE WHEN THE PLUGS ARE MOUNTED ON A PANEL OF OTHER THAN 1.6 OR 2.2mm THICKNESS.)  
2 USE THE SHARP EDGE FOR ENGAGEMENT WITH THE PANEL.

1	POLYAMIDE	UL94V-0. BLACK	2	BRASS	SURFACE:TIN PLATING 1μm min UNDER PLATING:NICKEL PLATED 0.5μm min			
NO.	MATERIAL	FINISH . REMARKS	NO.	MATERIAL	FINISH . REMARKS			
UNITS mm		SCALE 5 : 1		COUNT	DESCRIPTION OF REVISIONS	DESIGNED	CHECKED	DATE
<b>HRS</b> HIROSE ELECTRIC CO., LTD.		APPROVED : TS. SAKATA	08.11.25	DRAWING NO. EDC3-160490-01				
		CHECKED : TS. KUMAZAWA	08.11.21	PART NO. DF3-12EP-2A				
		DESIGNED : KT. ISHII	08.11.19	CODE NO. CL543-0277-3-00				
		DRAWN : KT. ISHII	08.11.19					