

**Features:**

- CMOS Technology
- TTL/CMOS compatible inputs
- Low switching noise
- 5nS typical true / complement output skew
- 5nS typical output rise and fall times
- Up to 20V output voltage
- Output high voltage programmable via  $V_{OPT}$
- Output low voltage programmable via  $V_{EE}$

**Applications**

- Digital control of analog circuits
- Level shifting and amplification
- Circuit applications requiring complementary signal generation with low skew
- Bias control for PIN diode drivers in a microwave switch

**General Description**

The MX856 and MX857 are high speed single channel level shifters with complimentary output drivers. The MX856 features a 5.0V  $V_{CC}$  positive supply, and the MX857 features a 3.3V  $V_{CC}$  positive supply.

The input buffers accept digital TTL or CMOS level signals, amplifies them to the  $V_{CC}$  and GND supply rails, and generates complementary outputs. The translator level shifts these output signals by amplifying them to the  $V_{CC}$  and  $V_{EE}$  supply rails.

The output drivers then buffer the signals to  $V_{OPT}$  and  $V_{EE}$ .  $V_{OPT}$  may be set within the range of  $V_{CC}$  and GND. The output drivers also adjust the complimentary signals for minimized skew error.

The MX856 and MX857 are designed to operate over a temperature range of  $-40^{\circ}\text{C}$  to  $+85^{\circ}\text{C}$ , and are available as die in wafer form, die in waaffle pack, 8 lead SOIC package, and SOIC on Tape and Reel.

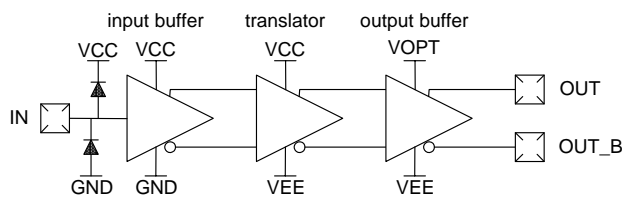
**Ordering Information – MX856**

Part No.	Description
19202	MX856 Die / Wafer Form
19201	MX856 Die / Waffle Pack
19200-00	MX856 8 Lead SOIC
19241-00	MX856 SOIC on Tape & Reel

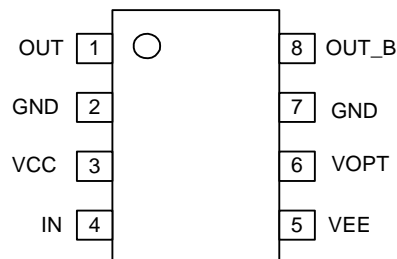
**Ordering Information – MX857**

Part No.	Description
19302	MX857 Die / Wafer Form
19301	MX857 Die / Waffle Pack
19300-00	MX857 8 Lead SOIC
19341-00	MX857 SOIC on Tape & Reel

**Functional Block Diagram**



**8 Lead SOIC Configuration**



## Absolute Maximum Ratings

SYMBOL	PARAMETER	MIN	MAX	UNITS
V <sub>CC</sub>	Positive DC Supply Voltage	-0.4	+6.0	V
V <sub>EE</sub>	Negative DC Supply Voltage	-17.0	+0.4	V
V <sub>OPT</sub>	Output Positive DC Supply Voltage		+6.0	V
V <sub>OPT</sub> - V <sub>EE</sub>	Output Positive to Negative Supply Voltage	-0.4	+20.0	V
V <sub>CC</sub> - V <sub>EE</sub>	Positive to Negative Supply Voltage	-0.4	+14.0	V
V <sub>CC</sub> - V <sub>OPT</sub>	Positive to Output Supply Voltage	-0.4	V <sub>CC</sub> +0.4	V
V <sub>IN</sub>	DC Input Voltage	-0.4	V <sub>CC</sub> +0.4	V
I <sub>IN</sub>	DC Input Current	-10	+10	μA
T <sub>A</sub>	Ambient Operating Temperature	-40	+85	°C
T <sub>STG</sub>	Storage Temperature	-65	+150	°C
ESD	ESD sensitivity (human body model)	1.0		kV

*Absolute Maximum Ratings are stress ratings. Stresses in excess of these ratings can cause permanent damage to the device. Functional operation of the device at these or any other conditions beyond those indicated in the operational sections of this data sheet is not implied. Exposure of the device to the absolute maximum ratings for an extended period may degrade the device and affect its reliability.*

## Guaranteed Operating Range

MX856 5.0V version

SYMBOL	PARAMETER	MIN	MAX	UNITS
V <sub>CC</sub>	Positive DC Supply Voltage	3.0	5.5	V
V <sub>EE</sub>	Negative DC Supply Voltage	-15.0	-4.5	V
V <sub>OPT</sub>	Output Positive DC Supply Voltage	0.0	5.5	V
V <sub>OPT</sub> - V <sub>EE</sub>	Output Positive to Negative Supply Voltage	7.5	20.0	V
V <sub>CC</sub> - V <sub>EE</sub>	Positive to Negative Supply Voltage	7.5	20.0	V
V <sub>CC</sub> - V <sub>OPT</sub>	Positive to Output Supply Voltage	0.0	V <sub>CC</sub>	V
T <sub>A</sub>	Ambient Operating Temperature	-40	+85	°C
T <sub>R</sub> , T <sub>F</sub>	Input Rise and Fall Time	0.0	500	nS

MX857B 3.3V version

SYMBOL	PARAMETER	MIN	MAX	UNITS
V <sub>CC</sub>	Positive DC Supply Voltage	3.0	3.6	V
V <sub>EE</sub>	Negative DC Supply Voltage	-17.0	-4.5	V
V <sub>OPT</sub>	Output Positive DC Supply Voltage	0.0	3.6	V
V <sub>OPT</sub> - V <sub>EE</sub>	Output Positive to Negative Supply Voltage	7.5	20.0	V
V <sub>CC</sub> - V <sub>EE</sub>	Positive to Negative Supply Voltage	7.5	20.0	V
V <sub>CC</sub> - V <sub>OPT</sub>	Positive to Output Supply Voltage	0.0	V <sub>CC</sub>	V
T <sub>A</sub>	Ambient Operating Temperature	-40	+85	°C
T <sub>R</sub> , T <sub>F</sub>	Input Rise and Fall Time	0.0	500	nS

## DC Characteristics - Over Guaranteed Operating Range

SYMBOL	PARAMETER	MIN	TYP	MAX	Units
V <sub>IH</sub>	Input HIGH Voltage	2.0			V
V <sub>IL</sub>	Input LOW Voltage			0.8	V
V <sub>OH</sub>	Output HIGH Voltage (I <sub>OH</sub> =-1mA)	V <sub>OPT</sub> - 0.1			V
V <sub>OL</sub>	Output LOW Voltage (I <sub>OL</sub> =1mA)			V <sub>EE</sub> + 0.1	V
I <sub>IN</sub>	Input Current (V <sub>IN</sub> =0.0 to V <sub>CC</sub> )	-10		+10	uA
I <sub>CC</sub>	Supply Current (V <sub>IN</sub> =0.0 or V <sub>CC</sub> )	V <sub>CC</sub> = 3.3V	<1.0		uA
		V <sub>CC</sub> = 5.0V	<1.0		uA
I <sub>EE</sub>	Supply Current (V <sub>IN</sub> =0.0 or V <sub>CC</sub> )	V <sub>CC</sub> = 3.3V	<1.0		uA
		V <sub>CC</sub> = 5.0V	<1.0		uA
I <sub>OPT</sub>	Supply Current (V <sub>IN</sub> =0.0 or V <sub>CC</sub> )	V <sub>CC</sub> = 3.3V	<1.0		uA
		V <sub>CC</sub> = 5.0V	<1.0		uA

### ESD Warning

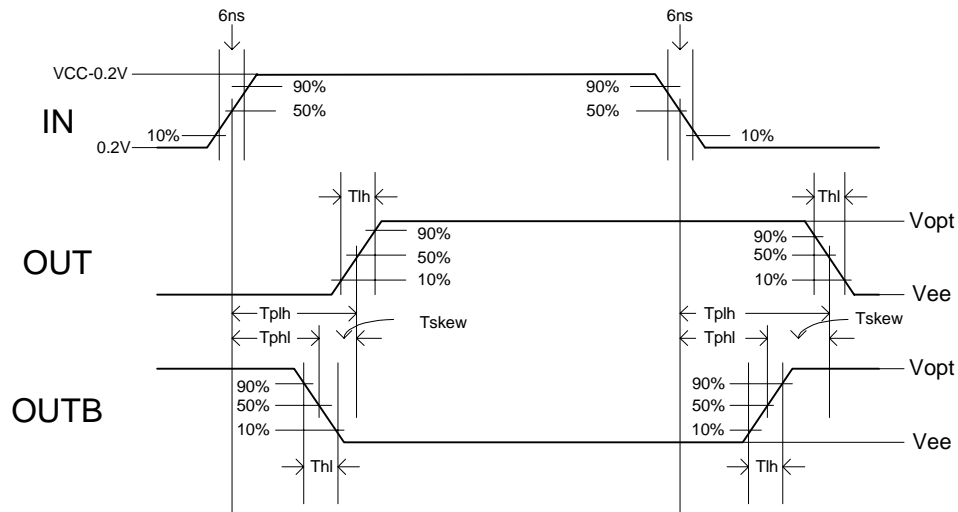
ESD (electrostatic discharge) sensitive device. Although the MX856 / MX857 feature proprietary ESD protection circuitry, permanent damage may be sustained if subjected to high energy electrostatic discharges. Proper ESD precautions are recommended to avoid performance degradation or loss of functionality.

## AC Characteristics

$V_{CC}=V_{OPT}=3.3V$ ,  $V_{EE}=-16.7V$  or  $-4.5V$ , Input rise and fall time 6ns,  $V_{IH}=3.1$ ,  $V_{IL}=0.2V$ ,  $T_A = -40^{\circ}C$  to  $+85^{\circ}C$   
 $V_{CC}=V_{OPT}=5.0V$ ,  $V_{EE}=-15.0V$  or  $-4.5V$ , Input rise and fall time 6ns,  $V_{IH}=4.8$ ,  $V_{IL}=0.2V$ ,  $T_A = -40^{\circ}C$  to  $+85^{\circ}C$

SYMBOL	PARAMETER		Typ	Max	UNITS
T <sub>PLH</sub>	Propagation Delay (low to high input)	V <sub>CC</sub> = 3.3V	22	29	nS
		V <sub>CC</sub> = 5.0V	24	29	nS
T <sub>PHL</sub>	Propagation Delay (high to low input)	V <sub>CC</sub> = 3.3V	20	29	nS
		V <sub>CC</sub> = 5.0V	20	29	nS
T <sub>TLH</sub>	Output Rise Time (C <sub>LD</sub> =10pf)	V <sub>CC</sub> = 3.3V	5	9	nS
		V <sub>CC</sub> = 5.0V	4	9	nS
T <sub>THL</sub>	Output Fall Time (C <sub>LD</sub> =10pf)	V <sub>CC</sub> = 3.3V	5	8	nS
		V <sub>CC</sub> = 5.0V	4	8	nS
T <sub>SKREW</sub>	Delay Skew (Output A to Output B)	V <sub>CC</sub> = 3.3V	5	10	nS
		V <sub>CC</sub> = 5.0V	5	10	nS
C <sub>IN</sub>	Input Capacitance			15	pF

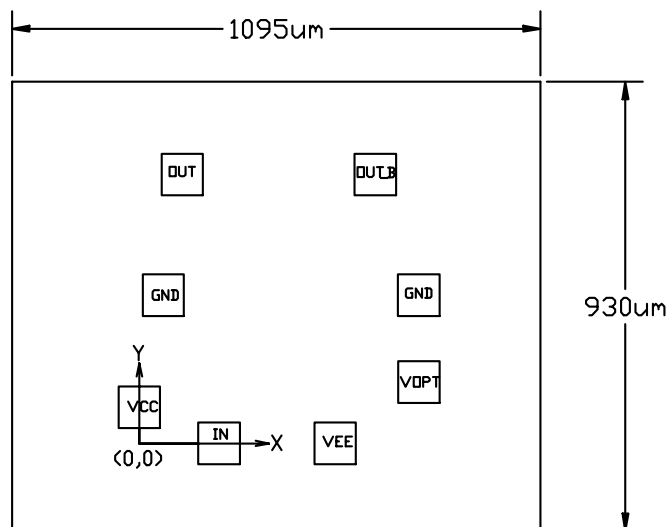
Note: Production Tested at 25°C



## Pad Locations (in $\mu\text{m}$ )

PAD NAME	X	Y
OUT	89.1	556.4
OUT_B	489.1	556.4
GND	579.1	306.3
V <sub>OPT</sub>	579.3	126.8
V <sub>EE</sub>	406	0
IN	165.4	0
V <sub>CC</sub>	0	74.3
GND	49.9	306.3

Pad location is the pad center point in microns. The origin of the coordinates is located as shown.

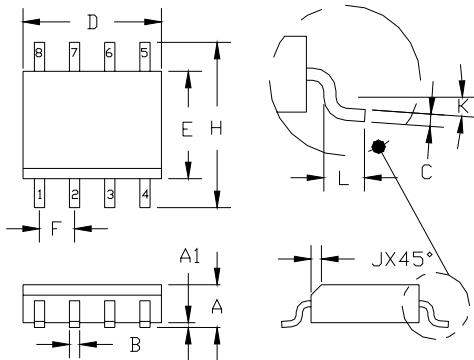


Die Size: 1095  $\mu\text{m}$  X 930  $\mu\text{m}$   
(Not Drawn To Scale)

## 8 Lead SOIC – I/O Assignment

Pin No.	Pin Name	Description
1	OUT	Output Driver
2	GND	Ground
3	V <sub>CC</sub>	Positive Supply for Input Buffer
4	IN	Input Buffer
5	V <sub>EE</sub>	Negative Supply for Output Driver
6	V <sub>OPT</sub>	Positive Supply for Output Driver
7	GND	Ground
8	OUT_B	Complimentary Output Driver

### 8-LEAD SOIC



DIM.	DIMENSIONS ①				NOTE
	INCH		MM.		
	MIN.	MAX.	MIN.	MAX.	
A	.0532	.0688	1.35	1.75	----
A1	.0040	.0098	.10	.25	----
B	.013	.020	.33	.51	----
C	.0075	.0098	.19	.25	----
D	.1890	.1968	4.80	5.00	②
E	.1497	.1574	3.80	4.00	②
F	.050	BSC	1.27	BSC	----
H	.2284	.2440	5.80	6.20	----
J	.0099	.0196	.25	.50	----
K	0°	8°	0°	8°	----
L	.016	.050	.40	1.27	----

3. MOLDED PACKAGE SHALL CONFORM TO JEDEC STANDARD CONFIGURATION MS-012 VARIATION AA.

② DIMENSIONS D AND E DO NOT INCLUDE MOLD PROTRUSIONS.

① CONTROLLING DIMENSIONS: MILLIMETERS.

NOTES: (UNLESS OTHERWISE SPECIFIED)

Micronix, Inc makes no representations or warranties with respect to the accuracy or completeness of the contents of this publication and reserves the right to make changes to specifications and product descriptions at any time without notice. Neither circuit patent licenses nor indemnity are expressed or implied. Except as set forth in Micronix's Standard Terms and Conditions of Sale, Micronix, Inc. assumes no liability whatsoever, and disclaims any expressed or implied warranty, relating to its products including, but not limited to, the implied warranty of merchantability, fitness for a particular purpose, or infringement of any intellectual property right.

**IXYS Corporation**

3540 Bassett Street  
Santa Clara, CA 925054  
Tel: 1-408-892-0700  
Fax: 1-408-496-0670  
e-mail:sales@ixys.net

**Micronix**

**An IXYS Company**

145 Columbia  
Aliso Viejo, CA 92656-1490  
Tel: 1-949-831-4622  
Fax: 1-949-831-4628

**SALES OFFICES AMERICAS**

**Eastern Region**

[Eastern North America, Mexico, South America]  
IXYS Corporation  
Beverly, MA  
Tel: 508-528-6883  
Fax: 508-528-4562  
wgh@ixys.net

**Central Region**

[Central North America]  
IXYS Corporation  
Greensburg, PA  
Tel: 724-836-8530  
Fax: 724-836-8540  
neil.lejeune@westcode.com

**Western Region**

[Western North America]  
IXYS Corporation  
Solana Beach, CA  
Tel: 858-792-1101  
slodor@ix.netcom.com

**SALES OFFICES EUROPE**

**European Headquarters**

IXYS Semiconductor GMBH  
Edisonstrasse 15  
D- 68623 Lampertheim  
Germany  
Tel: 49-6206-503203  
Fax: 49-6206-503286  
marcom@ixys.de

**United Kingdom**

IXYS Semiconductor Limited  
Langley Park Way  
Langley Park  
Chippenham  
Wiltshire SN 15 1GE - England  
Tel: 44 1249 444524  
Fax: 44 1249 659448  
sales@ixys.co.uk

**Sales Offices ASIA / PACIFIC**

**Asian Headquarters**

IXYS  
Room 1016, Chia-Hsin, Bldg II,  
10F, No. 96, Sec. 2  
Chung Shan North Road  
Taipei, Taiwan R.O.C.  
Tel: 886-2-2523-6368  
Fax: 886-2-2523-6368  
bradley.green@ixys.co.uk  
Jhong@clare.com

Check the IXYS Website for the local sales office nearest you. ([www.ixys.com](http://www.ixys.com))

<http://www.claremicronix.com>

---

IXYS cannot assume responsibility for use of any circuitry other than circuitry entirely embodied in this IXYS product. No circuit patent licenses nor indemnity are expressed or implied. IXYS reserves the right to change the specification and circuitry, without notice at any time. The products described in this document are not intended for use in medical implantation or other direct life support applications where malfunction may result in direct physical harm, injury or death to a person.

---

Specification: MX856 / MX857  
©Copyright 2006, IXYS Corporation  
All rights reserved. Printed in USA.