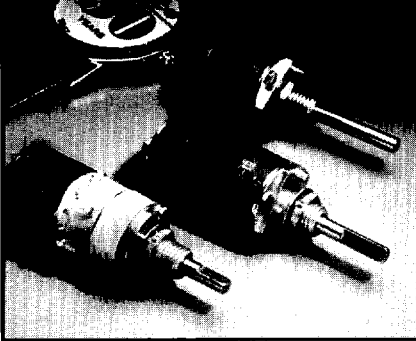


COMPACT "PB" SERIES POTENTIOMETER



The new compact "PB" Series builds on the exceptional acceptance of Janco's high reliability potentiometers by the aerospace/defense industry. Innovative packaging and careful attention to detail make the "PB" Series significantly smaller than our "PA" Series. It is ideal for those applications where restrictions make size a concern. Designed from the start for exceptional reliability, the "PB" Series has the built-in toughness you expect from Janco products, enabling it to operate in the most demanding environmental conditions. When "real estate" is at a premium and reliability is not an option, count on Janco's new "PB" Series potentiometers to do the job.

Features

- High reliability
- Custom configurable from 1 to 50K ohms resistance
- Custom configurable stops
- Pots may be stacked similar to rotary switch decks
- Various mounting methods available
- Rotational torque is custom configurable
- Environmentally sealed construction
- Can be stacked with Janco 13M series rotary switches for switch/pot combination

Specifications

- Total resistance tolerance: +/-10%
- Independent linearity: +/-1%
- Power rating: .50 watt max @ 70° C
- Effective electrical travel: 340 degrees max.
- Mechanical travel: 350 degrees max.
- Meets environmental requirements of MIL-S-3786
- Potentiometer element complies with requirements of MIL-R-39023

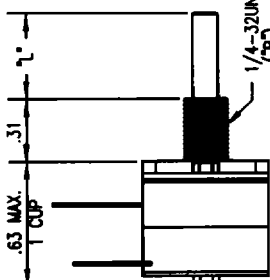
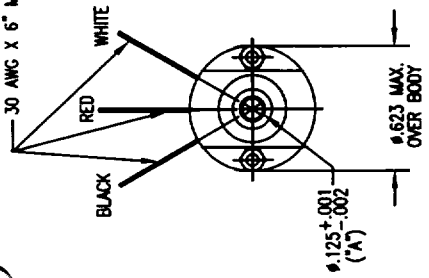
For More Information

For specific application information regarding this exciting new product please contact the Engineering department.

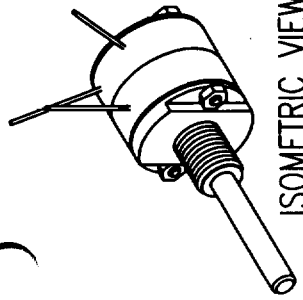
Janco Corporation, 3111 Winona Ave., Burbank, CA 91504

Phone: (818) 846-1800; FAX: (818) 842-3396; jancocorp@aol.com

30 AWG X 6" MIN. LG. LEAD WIRES



ISOMETRIC VIEW
(FOR REFERENCE ONLY)



PB1-A2471A-A0P

P O'RING PANEL SEAL	SECTIONS	LENGTH
O O'RING SHAFT SEAL	A 1 SECTION	.63
	B 2 SECTIONS	1.03
	C 3 SECTIONS	1.43
	D 4 SECTIONS	1.83

BUSHING	
PB1	1/4-32UNEF-2A MTG. BUSHING

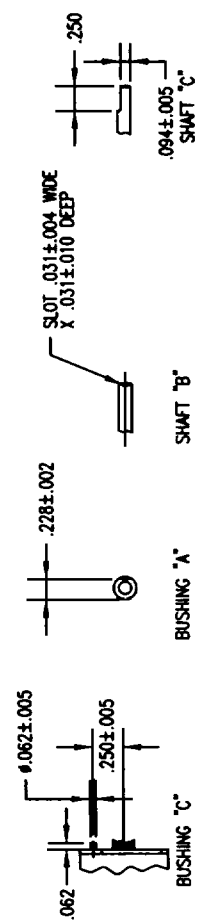
SHAFT TYPE	AVAILABLE WITH BUSHING
A PLAIN #1/8	ABC
B SLOTTED #1/8	ABC
C FLATTED #1/8	ABC

SHAFT LENGTH L"
24 3/4
28 7/8

ELEMENT TAPER	
A	LINEAR ±10%
B	LINEAR ±5%

RESISTANCE CODE/OHM	
1	1K
2	2K
3	5K
4	10K
5	20K

BUSHING	
A	1/4-32UNEF-2A WITH FLAT
B	1/4-32UNEF-2A ROUND
C	1/4-32UNEF-2A ROUND WITH PIN



PB SERIES

ITEM NO.	QTY.	RECD.	PART NO.
----------	------	-------	----------

LIST OF MATERIALS

UNLESS OTHERWISE SPECIFIED DIMENSIONS ARE IN INCHES TOLERANCES ON:			
FRAMES	DECIMALS	ANGLES	DECIMALS
COILS	.XXX±0.010		±.5
APPENDS	XX±0.03		
APPENDS			
APPENDS			

- POTENTIOMETER IS SUPPLIED WITH (1) JANCO 41 MTG. NUT & (1) 1714-05 LOCKWASHER.
- TOTAL RESISTANCE VALUE(OHMS): 1K, 2K, 5K, 10K, 20K.
- TOTAL RESISTANCE TOLERANCE: ±10%.
- INDEPENDENT LINEARITY: ±1%.
- EFFECTIVE ELECTRICAL TRAVEL: 300±5.
- MECHANICAL TRAVEL: 310°±5' (CONTINUITY MAINTAINED FOR FULL MECHANICAL TRAVEL).
- POWER RATING: 0.5 WATT MAX. @ 70°C.
- INSULATION RESISTANCE: 1,000 MEGOHMS MIN.
- DIELECTRIC WITHSTANDING VOLTAGE: 750 VAC.
- TORQUE TO ROTATE: 6 IN. OZ. MAX.
- THIS IS A VENDOR CONTROL DRAWING COVERING P/N PB SERIES.

NOTES:



POTENTIOMETER

C 91812
DATE: 2-1