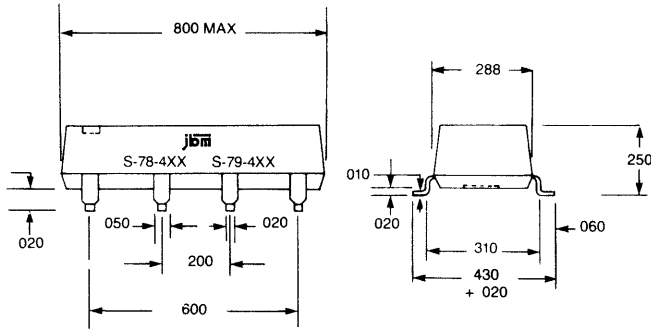


TTL Buffered Surface Mount DL-Comm.

S-78-400 SERIES (14-pin)
Single

S-79-400 SERIES (14-pin)
3 DLS

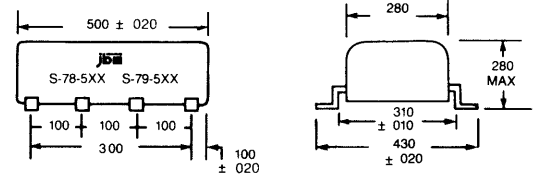


INPUT CONDITIONS (See Page 2)

Operating Temp	0°C to +70°C
Storage Temp	-55°C to +125°C
<i>(All lines internally terminated)</i>	
I_{IH} Logic "1" Input Current	50 μ A Max
I_{IL} Logic "0" Input Current	-2mA Max
V_{OH} Logic "1" Voltage Out	2.7V Min
V_{OL} Logic "0" Voltage Out	0.5V Max

S-78-500 SERIES (8-pin)
Mini Single

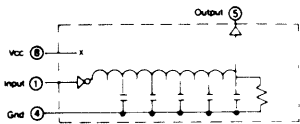
S-79-500 SERIES (8-pin)
Mini 3 DLS



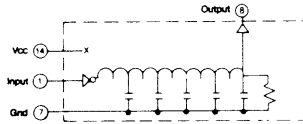
DRIVE CAPABILITIES (TTL LOADS)

Logic "0"	10 Loads/Tap Max 20 Loads/Unit Max
Logic "1"	20 Loads/Unit Max
Voltage Range	4.75V to 5.25V
Supply Current	Single 75mA typ Triple 110mA typ

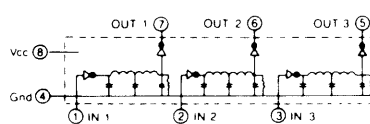
**8 PIN
S-78-5XX**



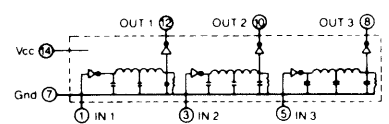
**14 PIN
S-78-4XX**



**8 PIN
S-79-5XX**



**14 PIN
S-79-4XX**



SINGLE OUTPUT DELAY LINES

8 PIN Part Number	14 PIN Part Number	TOTAL (ns) Delay Time
S-78-505	S-78-405	50 ± 1 ns
S-78-510	S-78-410	10.0 ± 2 ns
S-78-515	S-78-415	15.0 ± 2
S-78-520	S-78-420	20.0 ± 2
S-78-525	S-78-425	25.0 ± 2
S-78-530	S-78-430	30.0 ± 2
S-78-540	S-78-440	40.0 ± 2
S-78-550	S-78-450	50.0 ± 2.5
S-78-552	S-78-452	60.0 ± 3
S-78-556	S-78-456	75.0 ± 4
S-78-559	S-78-459	100 ± 5
S-78-561	S-78-461	150 ± 7.5
S-78-563	S-78-463	200 ± 10
S-78-565	S-78-465	250 ± 12.5
S-78-566	S-78-466	300 ± 15
S-78-568	S-78-468	400 ± 20
S-78-570	S-78-470	500 ± 25

3 INDEPENDENT DELAY LINES

8 PIN Part Number	14 PIN Part Number	Total (ns) Delay
S-79-505	S-79-405	50 ± 1
S-79-506	S-79-406	6.0 ± 1
S-79-507	S-79-407	7.0 ± 1.5
S-79-508	S-79-408	8.0 ± 1.5
S-79-509	S-79-409	9.0 ± 2
S-79-510	S-79-410	10.0 ± 2
S-79-515	S-79-415	15.0 ± 2
S-79-520	S-79-420	20.0 ± 2
S-79-525	S-79-425	25.0 ± 2.5
S-79-530	S-79-430	30.0 ± 3
S-79-540	S-79-440	40.0 ± 3
S-79-550	S-79-450	50.0 ± 3
—	S-79-452	60.0 ± 3
—	S-79-455	70.0 ± 3.5
—	S-79-456	75.0 ± 4
—	S-79-458	100 ± 5