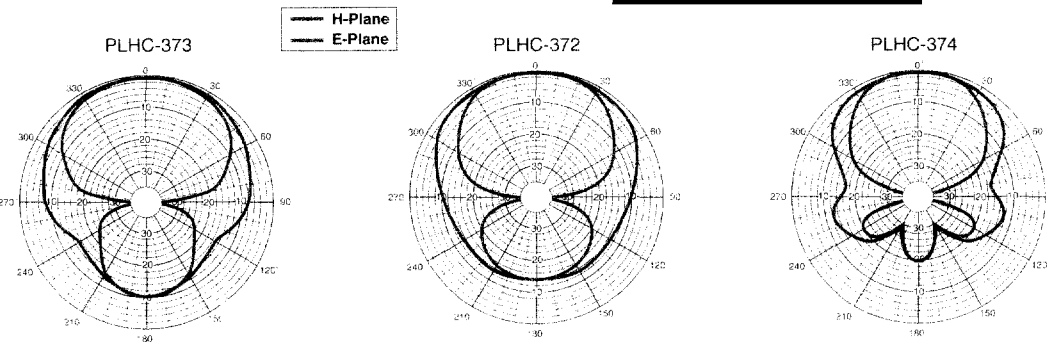
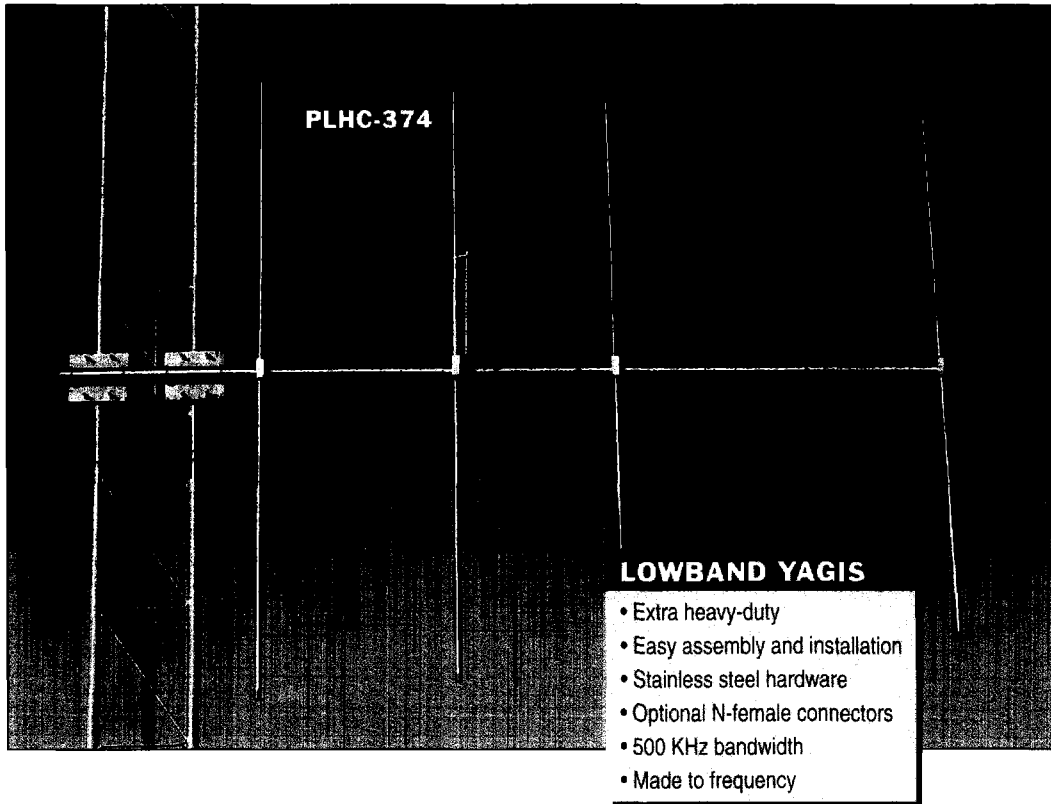


Heavy-Duty Point-To-Point Yagis

PLHC custom-built lowband Yagis

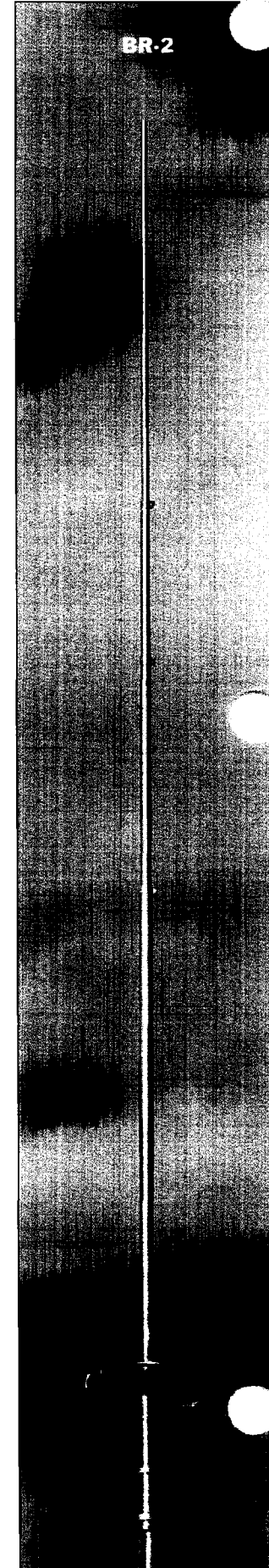
These antennas are extra heavy-duty. The mounting booms are 1-5/8 inch (4.1 cm) with .058 inch (0.15 cm) wall round aluminum tubing. They also feature solid aluminum machined mounting blocks with stainless steel fasteners. They are designed for through-the-tower rear mounting. The double mast mount brackets will take up to a 2-1/2 inch (6.35 cm) OD support. The Reddi-Matches are pre-set, and all the installer has to do is slide the elements onto the boom and tighten the bolts. The PLHC series Yagis can be ordered with N-female feedpoint connectors. With a bandwidth of approximately 500 KHz, these antennas are ideal for RCC link station applications.



LOWBAND YAGI SELECTOR CHART

Model	Freq. MHz	Gain dBd	No. Elem	F to B dB	VSWR 1.5:1 -3 dB Beamwidth		Connector Type (Female)	W/ surf. Area ft ² (m ²)	W/ surf.		Length in (cm)	Wt. lb (kg)
					E-Plane ^o	H-Plane ^o			W/ surv. mph (kph)	W/ 1/2" ice mph (kph)		
PLHC-372	30-75	2.6	2	17	95	130	UHF	2.5 (0.23)	100 (161)	70 (113)	42 (107)	15 (6.8)
PLHC-373	30-75	4.6	3	23	75	105	UHF	3.7 (0.35)	100 (161)	70 (113)	84 (213)	21 (9.5)
PLHC-374	30-75	7.2	4	30	55	79	UHF	4.8 (0.45)	100 (161)	70 (113)	136 (345)	32 (14.5)

Common Specifications: Power handling - 1000 Watts; Element material - 3/4 in (1.9cm) 6063-T832 aluminum tube; Boom material - 1-5/8 in (4.1 cm) 6063-T832 aluminum tube; Maximum mast diameter- 2-1/8 in (5.4 cm); Mounting style - U-bolts and plate



Rugged Ringo CRS Series

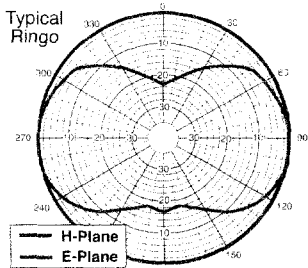
Nine field tunable models cover the 25-108 MHz frequency ranges with 2 dB gain. These half-wave end-fed antennas assure better omnidirectional coverage and maximum radiated RF output.

Their vertical element telescopes from 1 inch (2.54 cm) at the base to 1/2 inch (1.27 cm) seamless tubing at the top. The adjustable element sections are secured with full compression stainless steel clamps. Rugged Ringos can be tower top or side mounted, and feature a direct DC ground which reduces static buildup and lightning exposure.

Heavy-Duty BR Series

These are rugged antennas for your most difficult applications. We have the Ringo you need in three 25-50 MHz, 2 dB gain, field tunable models.

These half-wave end-fed antennas have a low radiation angle for better omnidirectional coverage and a capacitive stub and external ring matching system that assures maximum RF output. The base section is double thickness seamless tubing. Adjustable elements are secured with full compression stainless steel clamps. Teflon® feed insulators make Ringos ideal for high-power paging and other continuous duty applications. They can be tower top or side mounted.



LOWBAND RINGOS

- Heavy-duty
- Teflon® feed insulators
- DC grounded
- Stainless steel hardware
- Field tunable

CRS-3

SN30S
SN30

Cushcraft/Signals reliability and long life in a mobile antenna.

Style and performance are yours with Cushcraft/Signals low-band mobiles. Our 30-88 MHz antennas feature silver-plated connectors, brass hardware and much more. Ultrasonically welded-in brass threads and insert molded ferrule keep mobiles moisture-proof in the toughest conditions. Cushcraft/Signals mobile antennas are available in economical FastPaks!

LOWBAND MOBILES

- All-brass mount
- Spring models available
- Silver plated contacts
- Stainless steel radiator

LOWBAND RINGO SELECTOR CHART

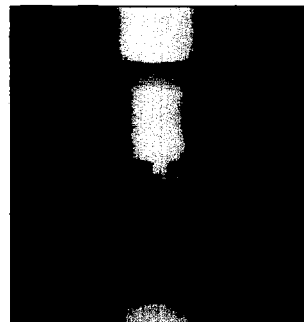
Model	Freq. MHz	Gain dB	Power Watts	Bandwidth 1.5:1 MHz	-3dB Bmwidth E-Plane°	Conn. Type (female)	Height ft (m)	Weight lb (kg)	W/sur Area ft² (m²)	W/survival mph (kph)	Max. Mast Dia. in (cm)
Rugged Ringos											
CRS-2	25-33	2.0	250	1.0	73	UHF	18.6 (5.6)	4.0 (1.8)	0.83 (0.08)	90 (145)	1-1/4 (3.2)
CRS-3	33-44	2.0	250	1.3	73	UHF	14.0 (4.3)	3.0 (1.4)	0.62 (0.06)	90 (145)	1-1/4 (3.2)
CRS-4	44-50	2.0	250	1.7	73	UHF	10.6 (3.2)	2.5 (1.1)	0.50 (0.05)	90 (145)	1-1/4 (3.2)
CRS-6	66-72	2.0	250	2.6	73	UHF	7.3 (2.2)	2.0 (0.9)	0.32 (0.03)	90 (145)	1-1/4 (3.2)
CRS-7	72-78	2.0	250	2.9	73	UHF	6.6 (2.0)	2.0 (0.9)	0.29 (0.03)	90 (145)	1-1/4 (3.2)
CRS-8	78-84	2.0	250	3.1	73	UHF	6.2 (1.9)	1.5 (0.7)	0.27 (0.03)	90 (145)	1-1/4 (3.2)
CRS-9	84-90	2.0	250	3.4	73	UHF	5.7 (1.7)	1.5 (0.7)	0.25 (0.02)	90 (145)	1-1/4 (3.2)
CRS-10	90-98	2.0	250	3.6	73	UHF	5.3 (1.6)	1.5 (0.7)	0.23 (0.02)	90 (145)	1-1/4 (3.2)
CRS-11	98-108	2.0	250	3.9	73	UHF	4.8 (1.5)	1.5 (0.7)	0.22 (0.02)	90 (145)	1-1/4 (3.2)
Heavy Duty Ringos											
BR-2	25-32	2.0	500	1.0	73	UHF	18.5 (5.6)	8 (3.6)	1.73 (0.19)	115 (185)	1-7/8 (4.8)
BR-3	32-42	2.0	500	1.3	73	UHF	18.5 (5.6)	8 (3.6)	1.73 (0.19)	115 (185)	1-7/8 (4.8)
BR-4	42-50	2.0	500	1.7	73	UHF	18.5 (5.6)	8 (3.6)	1.73 (0.19)	115 (185)	1-7/8 (4.8)

Common Specifications: VSWR - 1.5:1 nominal; Element - 5063-T832 aluminum tube; Mounting style - tube end. Heavy-duty Ringos feature Teflon® dielectric connectors

LOWBAND MOBILE SELECTOR CHART

FREQUENCY MHz	HOLE MOUNTS				BLACK MAG MTS		TRUNK MOUNTS		COIL & ROD ONLY		ROD ONLY	COIL ONLY	
	Without Spring		With Spring		w/o Spring	w/ Spring	w/o Spring	w/ Spring	w/o Spring	w/ Spring		w/o Spring	w/ Spring
	RG-58	UltraLink	RG-58	UltraLink	RG-58	RG-58	RG-58	RG-58					
30-35 MHz, 0 dB Gain	SN30	SN30L	SN30S	SN30LS	SN30M	SN30MS	SN30T	SN30TS	SN30A	SN30SA	SN30R	SN30C	SN30SC
34-40 MHz, 0 dB Gain	SN34	SN34L	SN34S	SN34LS	SN34M	SN34MS	SN34T	SN34TS	SN34A	SN34SA	SN34R	SN34C	SN34SC
40-46 MHz, 0 dB Gain	SN40	SN40L	SN40S	SN40LS	SN40M	SN40MS	SN40T	SN40TS	SN40A	SN40SA	SN40R	SN40C	SN40SC
46-50 MHz, 0 dB Gain	SN46	SN46L	SN46S	SN46LS	SN46M	SN46MS	SN46T	SN46TS	SN46A	SN46SA	SN46R	SN46C	SN46SC
66-88 MHz, 0 dB Gain	SN66	SN66L	SN66S	SN66LS	SN66M	SN66MS	SN66T	SN66TS	SN66A	SN66SA	SN66R	SN66C	SN66SC

Hole mounts come standard with 14.5 Feet (4.4m) cable



Ultrasonic welding replaces glue for strong holding power and moisture proofing.