

PC [For General]

Screw Terminal Type of Aluminum Electrolytic Capacitors General Purpose

ELECTRICAL CHARACTERISTICS

Rated Voltage : 6.3 ~ 100V / 160 ~ 450V

Operating Temperature : -40° ~ +85°C / -25° ~ +85°C

Nominal Capacitance Range : 2200 ~ 560 000 μ F / 220 ~ 22 000 μ F

Capacitance Tolerance : -10 ~ +50% (\pm 20%)

DC Leakage Current (μ A): 0.02 CV or 5000

Dissipation Factor : at 120 Hz, 25°C

Load Life : 1000 Hours at Rated Temperature

(a) Capacitance Change : Within 15% of Initial Value

(b) Dissipation Factor : Not Exceed 200% of Initial Requirement

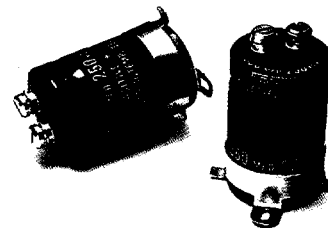
(c) Leakage Current : Not Exceed the Initial Requirement

Shelf Life : 500 Hours, No Voltage Applied

(a) Capacitance Change : Within 15% of Initial Value

(b) Dissipation Factor : Not Exceed 200% of Initial Requirement

(c) Leakage Current : Not Exceed 200% of Initial Requirement



DESCRIPTION

PC type capacitors are ideally suitable to be used in industrial applications.

DIAGRAM OF DIMENSIONS

Unit : mm

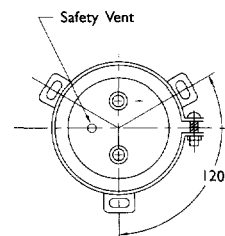
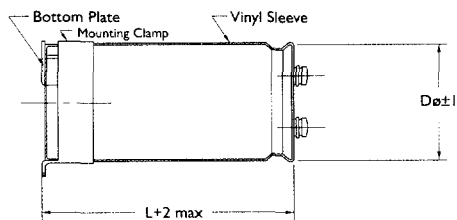
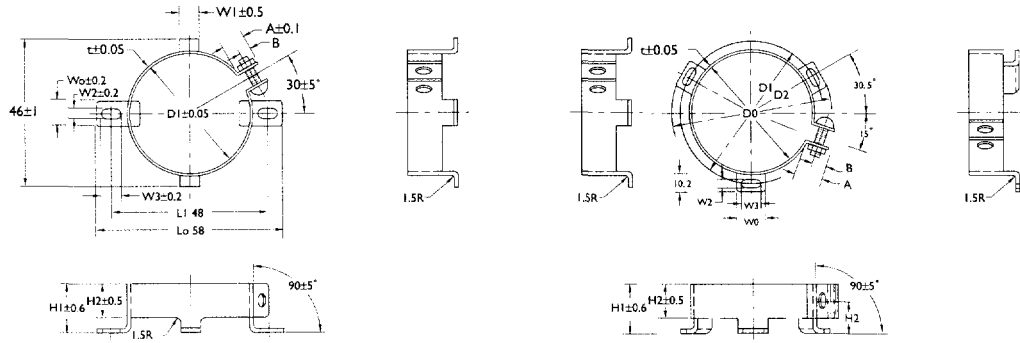


DIAGRAM OF MOUNTING CLAP DIMENSIONS

Unit : mm



NO.	DIA. OF CAPACITOR	W0	W2	W3	D1	L0	B	H1	H2	L1	W1	FIG.
01	35	10.5	3.5	7.0	35.5	58.0	3.5	15.0	10.0	48.0	6.0	1
02	50	13.0	4.4	7.1	50.8	71.4	5.0	19.2	9.6	63.5	-	2
03	63	13.0	4.4	7.1	63.5	84.1	5.0	19.2	9.6	76.2	-	2
04	76	13.0	4.4	7.1	76.2	96.8	5.0	19.2	9.6	87.3	-	2