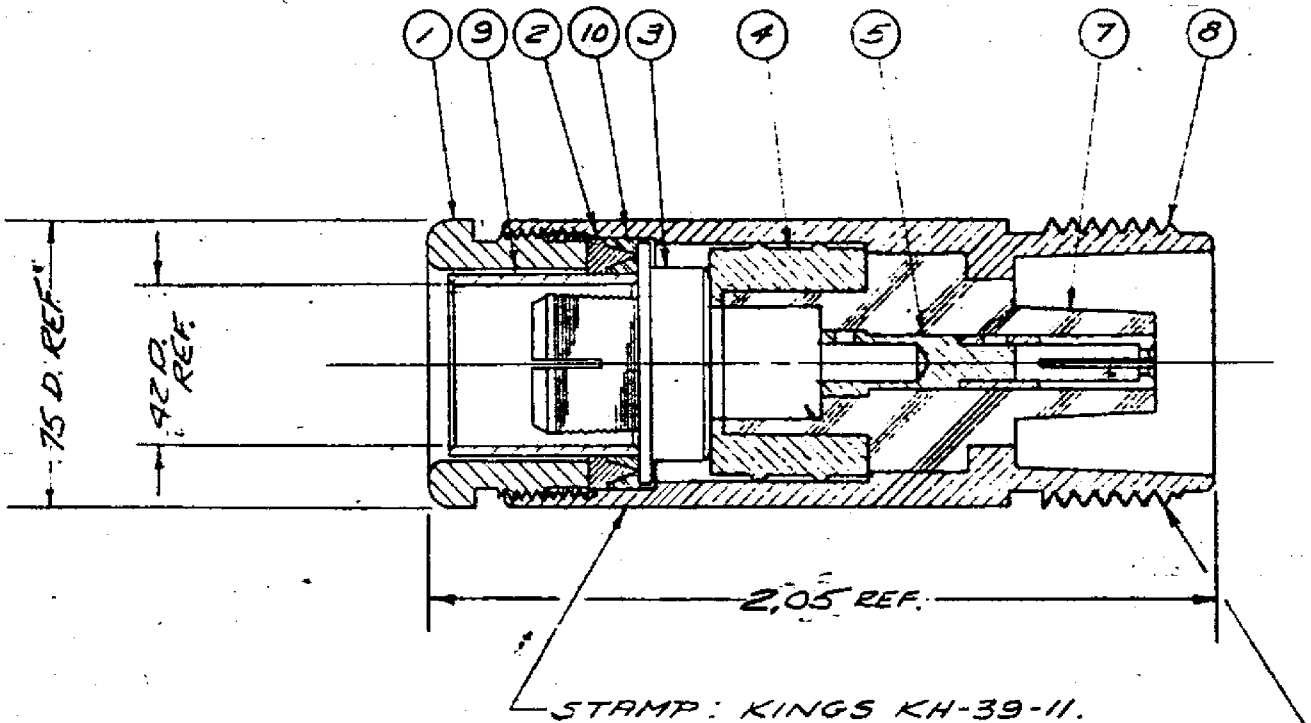


UNLESS OTHERWISE SPECIFIED LIMITS ON DIMENSIONS ARE:
 FRACTIONS ± .010 DECIMALS ± .004 ANGLES ± 1/2°

REVISIONS	
ISSUE	CHANGES
1.	REVISED NOTE 4 17-OCT-62
2.	CN 2901C 13 JAN 65
3.	CN 5862 A J.M. 18 APR 68
4.	CN 13268A JL 20 MAR 74
5.	CN 16733E JHP 3 FEB 77



NOTES:

1. FOR USE WITH RG-8, 8A, 213, 11 & 11A/U CABLE.
2. FOR CABLING INSTRUCTIONS SEE CP 208A.
3. FOR CABLE TRIMMING USE KTF-23 & KTD-82.
4. FOR CRIMPING, USE DIE, SIZE 03.

10	1	GASKET	571-3-M59
9	1	K-GRIP SLEEVE	5-89-04-2-M07
8	1	BODY	
7	1	INSULATOR	
5	1	HN CONTACT ASSY F	60D-6-M07
4	1	RETAINER	
3	1	K-GRIP	5-89-361-M07
2	1	GLAND	5-89-366-M07
1	1	CLAMP NUT	N59-30-3-M07
ITEM No.	QTY REQD	DESCRIPTION	DRAWING No.

FINISH	
SPEC.	
MAT.	
SPEC.	
HN JACK	
DRAWN L1	DATE 23 FEB 62
APPR. PETE	DATE 23 FEB 62

ALL DIMENSIONS
PRIOR TO PLATING

REMOVE ALL BURRS, MAINTAIN
SHARP CORNERS UNLESS CHAMFERS,
RADIi OR FILLETS ARE SPECIFIED.

UNLESS OTHERWISE SPECIFIED,
MAXIMUM ACCEPTABLE SURFACE ROUGHNESS IS
100 MICROINCHES RMS IN ACCORDANCE WITH NAS-30

KINGS ELECTRONICS
40 MARBLEDALE ROAD
TUCKAHOE, N. Y.

KH-39-11 S-D